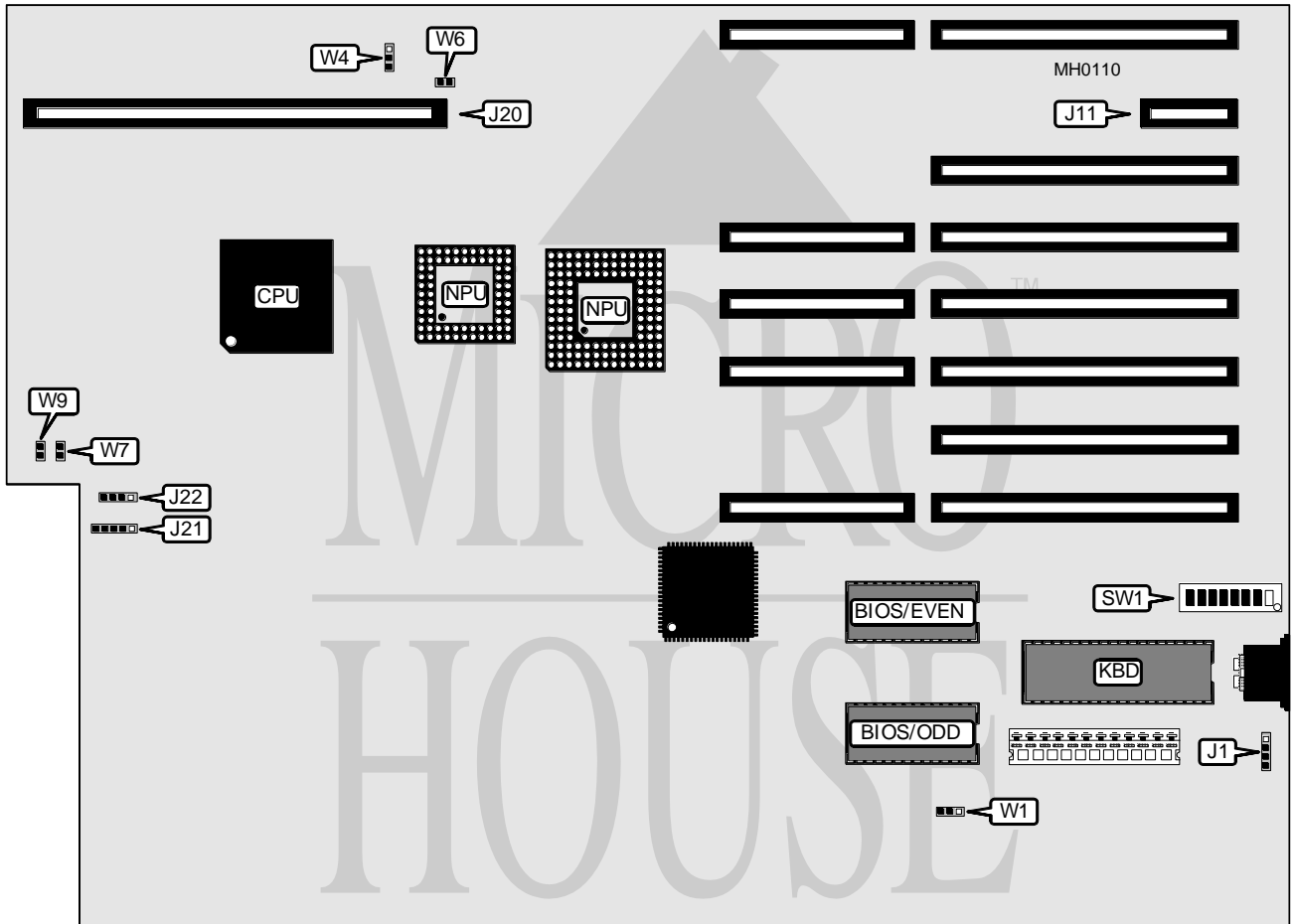


MICRONICS COMPUTERS, INC.

386-20

Processor	80386DX
Processor Speed	20MHz
Chip Set	Micronics
Max. Onboard DRAM	8MB (on system memory card)
Cache	16KB (on M100C and M400C system memory cards only)
BIOS	Award/Phoenix
Dimensions	355.6mm x 255.4mm
I/O Options	32-bit system memory card slot
NPU Options	80387/3167



CONNECTIONS			
Purpose	Location	Purpose	Location
External battery	J1	Speaker	J22
32-bit system memory card power	J11	Turbo LED	W7
32-bit system memory card	J20	Reset switch	W9
Power LED & keylock	J21		

Note: The system memory card is inserted into both J11 & J20.

Continued on next page . . .

MICRONICS COMPUTERS, INC.

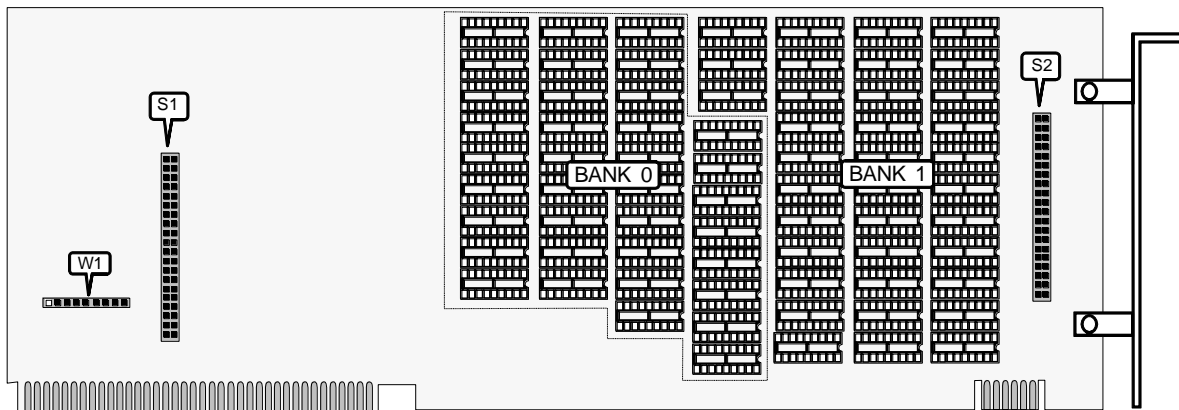
386-20

... continued from previous page

USER CONFIGURABLE SETTINGS		
Function	Jumper/Switch	Position
í Factory configured - do not alter	SW1/1	On
NPU enabled	SW1/2	On
NPU disabled	SW1/2	Off
í Factory configured - do not alter	SW1/3	Off
í Video BIOS shadowing enabled	SW1/4	On
Video BIOS shadowing disabled	SW1/4	Off
í Factory configured - do not alter	SW1/5	Off
í Monitor type select color	SW1/6	On
Monitor type select monochrome	SW1/6	Off
Cache enabled	SW1/7	On
Cache disabled	SW1/7	Off
í Factory configured - do not alter	SW1/8	Off
BIOS type select 27128	W1	pins 1 & 2 closed
BIOS type select 27256	W1	pins 2 & 3 closed
NPU mode select synchronous with CPU	W4	pins 2 & 3 closed
	W6	open
NPU mode select asynchronous with CPU	W4	pins 1 & 2 closed
	W6	closed

Note: Cache configuration applies to main memory boards M100C and M400C only.

SYSTEM MEMORY CARD MODEL M100



CONNECTIONS	
Purpose	Location
32-bit piggy back memory card	S1 & S2

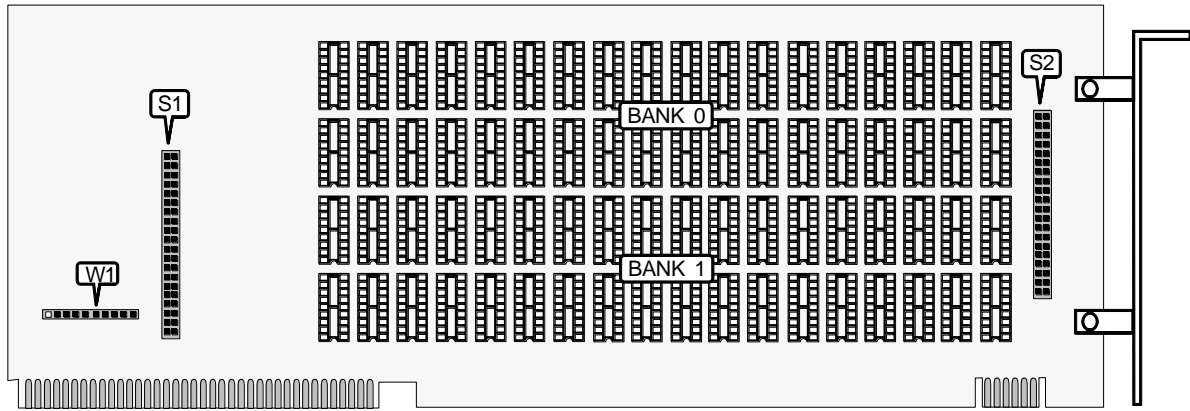
DRAM CONFIGURATION			
Size	Bank 0	Bank 1	Jumper W1
1MB	(36) 256K x 1	NONE	pins 2 & 3, 4 & 5, 7 & 8 closed
2MB	(36) 256K x 1	(36) 256K x 1	pins 1 & 2, 4 & 5, 7 & 8 closed

Continued on next page ...

MICRONICS COMPUTERS, INC.

386-20 SYSTEM MEMORY CARD MODEL M200

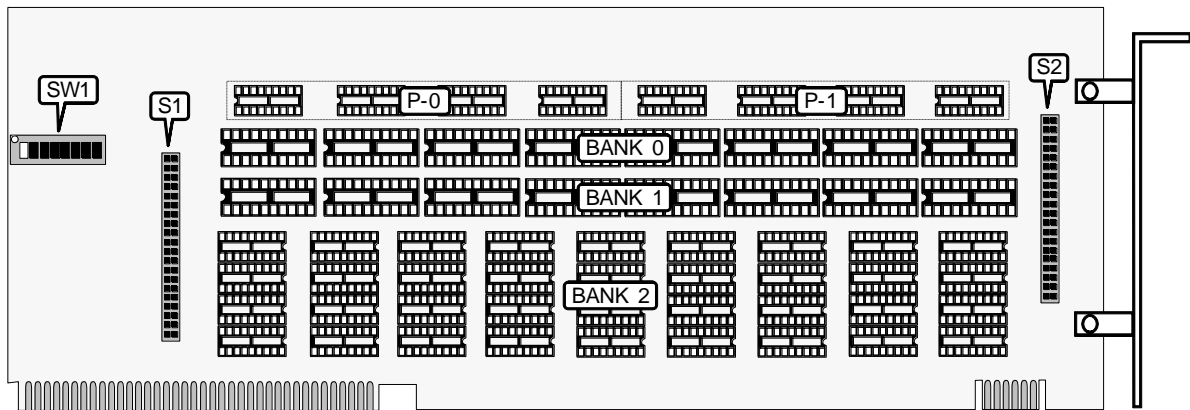
... continued from previous page



CONNECTIONS	
Purpose	Location
32-bit piggy back memory card	S1 & S2

DRAM CONFIGURATION			
Size	Bank 0	Bank 1	Jumper W1
4MB	(36) 1M x 1	NONE	pins 1 & 2, 3 & 4 closed
8MB	(36) 1M x 1	(36) 1M x 1	pins 3 & 4 closed

SYSTEM MEMORY CARD MODEL M300



CONNECTIONS	
Purpose	Location
32-bit piggy back memory card	S1 & S2

DRAM CONFIGURATION						
Size	Bank 0	Parity (P-0)	Bank 1	Parity (P-1)	Bank 2	SW1
1MB	(8) 44256	(4) 4464	NONE	NONE	NONE	switches 5, 6, & 8 closed
2MB	(8) 44256	(4) 4464	(8) 44256	(4) 4464	NONE	switches 3, 5, 6, & 8 closed
6MB	(8) 44256	(4) 4464	(8) 44256	(4) 4464	(36) 411000	switches 2, 3, 5, 6, & 8 closed

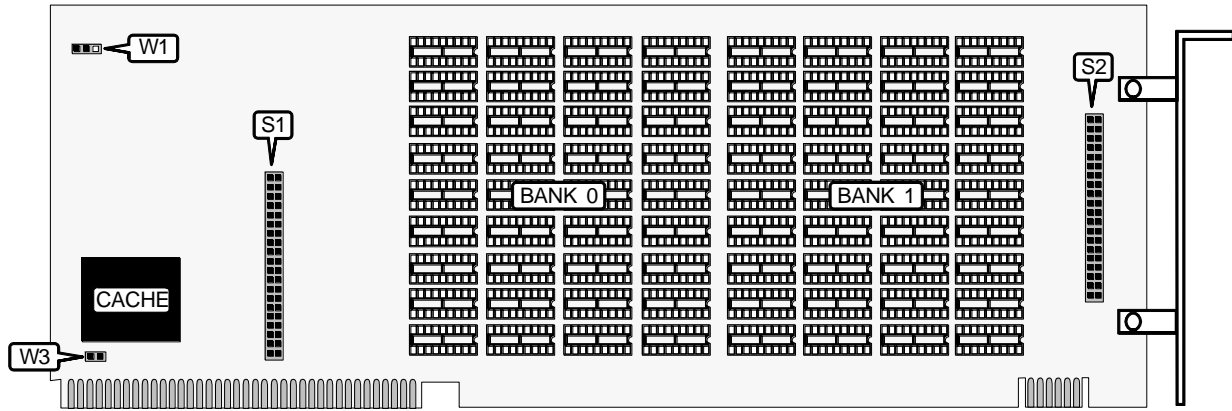
Continued on next page ...

MICRONICS COMPUTERS, INC.

386-20

SYSTEM MEMORY CARD MODEL M100C

... continued from previous page

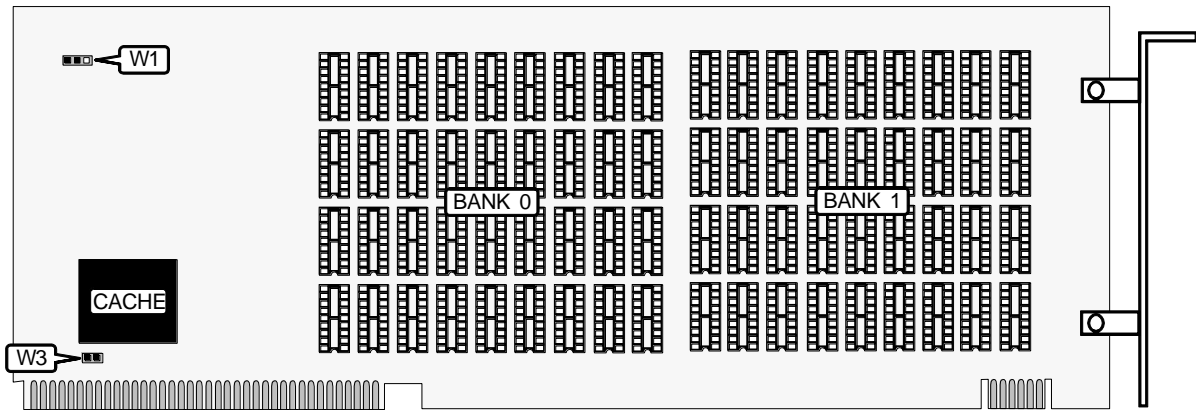


CONNECTIONS	
Purpose	Location
32-bit piggy back memory card	S1 & S2

DRAM CONFIGURATION				
Size	Bank 0	Bank 1	Jumper W1	Jumper W3
1MB	(36) 256K x 1	NONE	pins 1 & 2 closed	closed
2MB	(36) 256K x 1	(36) 256K x 1	pins 2 & 3 closed	closed

Note: Jumper W3 enables cache controller chip. Disabling this jumper will decrease system speed.

SYSTEM MEMORY CARD MODEL M400C



DRAM CONFIGURATION				
Size	Bank 0	Bank 1	Jumper W1	Jumper W3
4MB	(36) 1M x 1	NONE	pins 1 & 2 closed	closed
8MB	(36) 1M x 1	(36) 1M x 1	pins 2 & 3 closed	closed

Note: Jumper W3 enables cache controller chip. Disabling this jumper will decrease system speed.