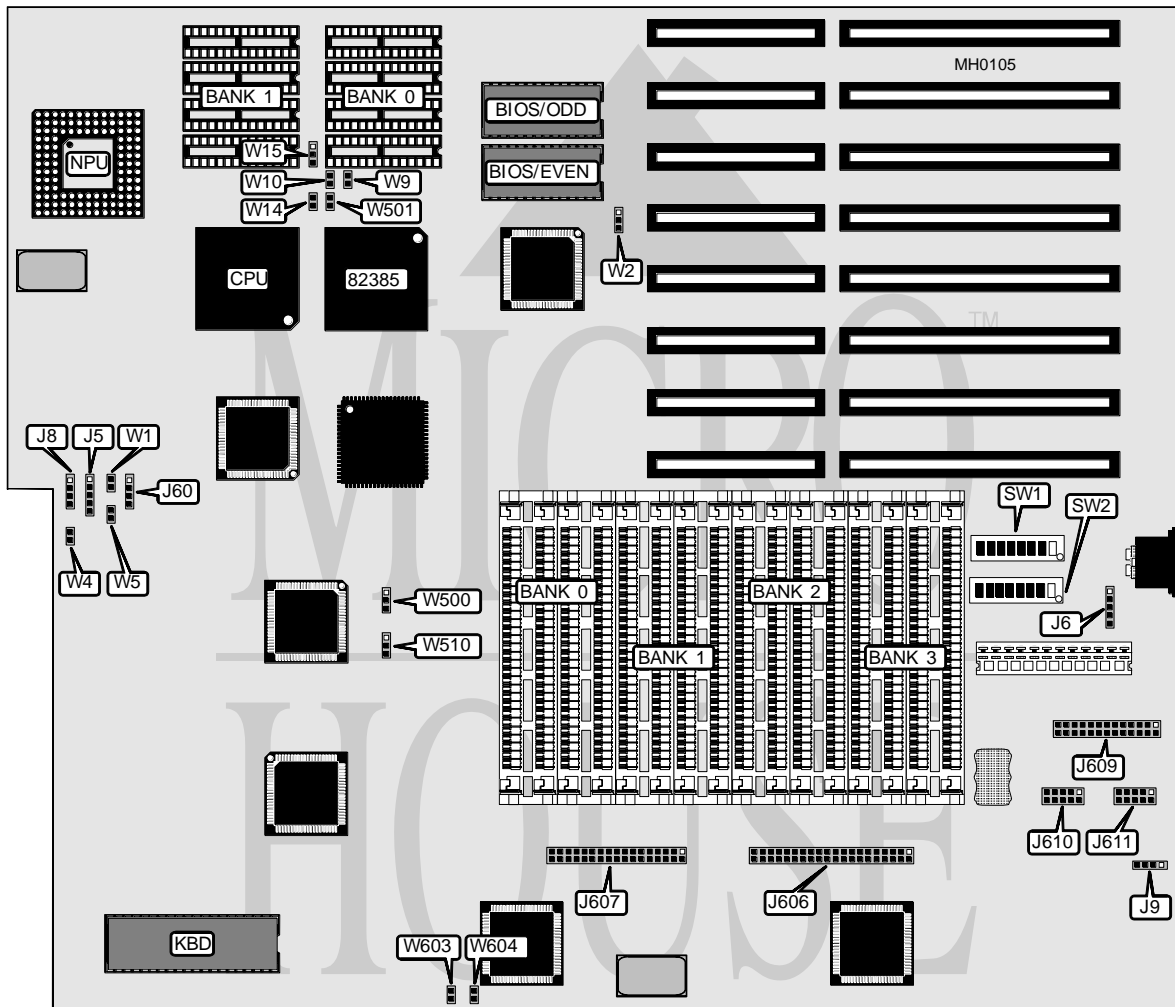


# MICRONICS COMPUTERS, INC. 80386 ASIC CACHE ISA

<b>Processor</b>	80386DX
<b>Processor Speed</b>	20/25/33MHz
<b>Chip Set</b>	Micronics
<b>Max. Onboard DRAM</b>	16MB
<b>Cache</b>	64KB (82385)
<b>BIOS</b>	Micronics
<b>Dimensions</b>	355.6mm x 304.8mm
<b>I/O Options</b>	Parallel port, serial ports (2), floppy drive interface, IDE interface
<b>NPU Options</b>	80387/3167



CONNECTIONS			
Purpose	Location	Purpose	Location
Power LED & keylock	J5	Serial port (COM1)	J610
Auxiliary keyboard	J6	Serial port (COM2)	J611
Speaker	J8	Reset switch	W1
External battery	J9	Turbo LED	W4
IDE interface LED	J60	Turbo switch	W5
Parallel port	J609		

Continued on next page . . .

# MICRONICS COMPUTERS, INC.

## 80386 ASIC CACHE ISA

... continued from previous page

USER CONFIGURABLE SETTINGS		
Function	Jumper/Switch	Position
í Factory configured - do not alter	SW1/1	On
í NPU enabled	SW1/2	Off
NPU disabled	SW1/2	On
í Factory configured - do not alter	SW1/3	Off
í Video BIOS shadowing enabled	SW1/4	On
Video BIOS shadowing disabled	SW1/4	Off
í Factory configured - do not alter	SW1/5	Off
í Monitor type select color	SW1/6	On
Monitor type select monochrome	SW1/6	Off
í Cache enabled	SW1/7	On
Cache disabled	SW1/7	Off
í Factory configured - do not alter	SW1/8	Off
í Serial port (J610) select COM1/3F8-3FFh	SW2/1	On
Serial port (J610) disabled	SW2/1	Off
í Serial port (J611) select COM2/2F8-2FF	SW2/2	On
Serial port (J611) disabled	SW2/2	Off
í IDE interface (J606) enabled	SW2/3	On
IDE interface (J606) disabled	SW2/3	Off
í Floppy interface (J607) enabled	SW2/4	On
Floppy interface (J607) disabled	SW2/4	Off
í Floppy interface address select primary (3F0 - 3F7)	SW2/5	On
Floppy interface address select secondary (2F0 - 2F7)	SW2/5	open
í Factory configured - do not alter	SW2/8	On
í BIOS select 27256	W2	pins 2 & 3 closed
BIOS select 27512	W2	pins 1 & 2 closed
Non-cacheable region select E00000 through FFFFFFF	W9	Closed
Non-cacheable region select D00000 through DFFFFFF	W9	Open
í Base memory size select 640KB	W10	Open
Base memory size select 512KB	W10	Closed
í Factory configured - do not alter	W20	Open
í Video BIOS cacheing enabled	W501	Closed
Video BIOS cacheing disabled	W501	Open
í Floppy drive type select single speed	W603	Open
Floppy drive type select dual speed	W603	Closed
í IDE interface (J606) precompensation mode normal (125ns)	W604	Closed
IDE interface (J606) precompensation mode alternate	W604	Open

Continued on next page ...

# MICRONICS COMPUTERS, INC.

## 80386 ASIC CACHE ISA

... continued from previous page

DRAM CONFIGURATION				
Size	Bank 0	Bank 1	Bank 2	Bank 3
1MB	(4) 256K x 9	NONE	NONE	NONE
2MB	(4) 256K x 9	(4) 256K x 9	NONE	NONE
4MB	(4) 1M x 9	NONE	NONE	NONE
5MB	(4) 256K x 9	(4) 1M x 9	NONE	NONE
6MB	(4) 256K x 9	(4) 256K x 9	(4) 1M x 9	NONE
8MB	(4) 1M x 9	(4) 1M x 9	NONE	NONE
9MB	(4) 256K x 9	(4) 1M x 9	(4) 1M x 9	NONE
10MB	(4) 256K x 9	(4) 256K x 9	(4) 1M x 9	(4) 1M x 9
12MB	(4) 1M x 9	(4) 1M x 9	(4) 1M x 9	NONE
13MB	(4) 256K x 9	(4) 1M x 9	(4) 1M x 9	(4) 1M x 9
16MB	(4) 1M x 9	(4) 1M x 9	(4) 1M x 9	(4) 1M x 9

DRAM JUMPER CONFIGURATION		
Size	W500	W510
1MB	pins 1 & 2 closed	pins 1 & 2 closed
2MB	pins 1 & 2 closed	pins 1 & 2 closed
4MB	pins 2 & 3 closed	pins 1 & 2 closed
5MB	pins 1 & 2 closed	pins 2 & 3 closed
6MB	pins 1 & 2 closed	pins 1 & 2 closed
8MB	pins 2 & 3 closed	pins 2 & 3 closed
9MB	pins 1 & 2 closed	pins 2 & 3 closed
10MB	pins 1 & 2 closed	pins 1 & 2 closed
12MB	pins 2 & 3 closed	pins 2 & 3 closed
13MB	pins 1 & 2 closed	pins 2 & 3 closed
16MB	pins 2 & 3 closed	pins 2 & 3 closed

CACHE CONFIGURATION			
Size	Organization	Bank 0	Bank 1
32KB	Direct Mapped	(4) 8K x 8	NONE
64KB	2-way Set-Associative	(4) 8K x 8	(4) 8K x 8

CACHE JUMPER CONFIGURATION		
Size	W14	W15
32KB	Closed	pins 1 & 2 closed
64KB	Open	pins 2 & 3 closed

PARALLEL PORT CONFIGURATION		
Setting	SW2/6	SW2/7
LPT1/IRQ7/378-37F	On	On
LPT1/IRQ7/3B8-3BF	On	Off
LPT2/IRQ5/278-27F	Off	On
Disabled	Off	Off