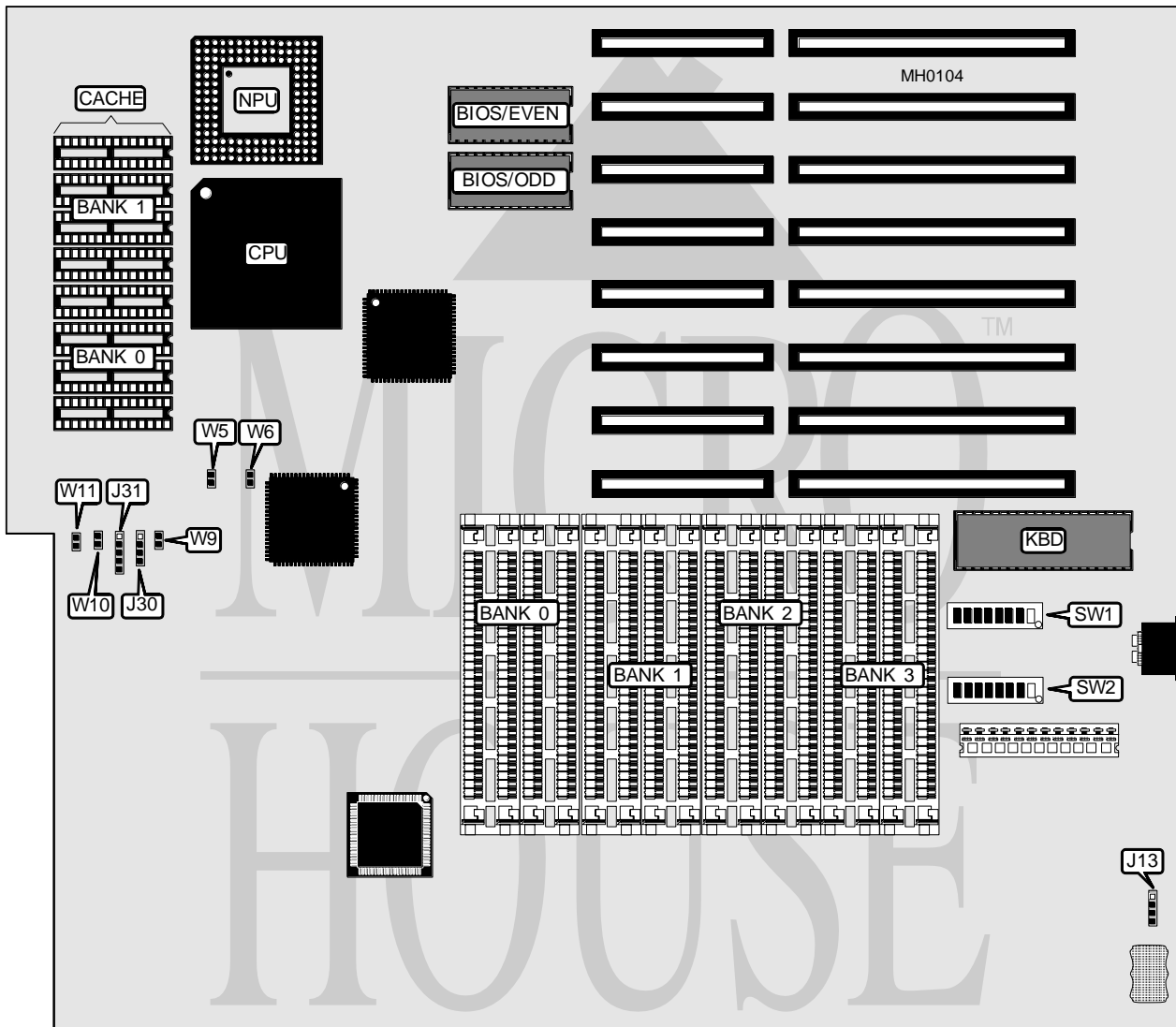


# MICRONICS COMPUTERS, INC.

## 80486 ASIC ISA

<b>Processor</b>	80486DX
<b>Processor Speed</b>	25/33MHz
<b>Chip Set</b>	Micronics
<b>Max. Onboard DRAM</b>	64MB
<b>Cache</b>	64/128/256KB
<b>BIOS</b>	Phoenix
<b>Dimensions</b>	350mm x 304mm
<b>I/O Options</b>	None
<b>NPU Options</b>	4167



Continued on next page . . .

# MICRONICS COMPUTERS, INC.

## 80486 ASIC ISA

... continued from previous page

CONNECTIONS			
Purpose	Location	Purpose	Location
External battery	J13	Turbo LED	W9
Speaker	J30	Reset switch	W10
Power LED & keylock	J31	Turbo switch	W11

USER CONFIGURABLE SETTINGS		
Function	Switch	Position
í Factory configured - do not alter	SW1/1	Off
í Factory configured - do not alter	SW1/2	Off
í Factory configured - do not alter	SW1/3	Off
í Factory configured - do not alter	SW1/4	Off
í Factory configured - do not alter	SW1/5	Off
í CPU speed select 25MHz	SW1/6	On
CPU speed select 33MHz	SW1/6	Off
í Video BIOS cacheing enabled	SW1/7	Off
Video BIOS cacheing disabled	SW1/7	On
í Factory configured - do not alter	SW1/8	Off
í DRAM speed select 0 wait states	SW2/6	Off
DRAM speed select 1 wait state	SW2/6	On

DRAM CONFIGURATION				
Size	Bank 0	Bank 1	Bank 2	Bank 3
1MB	(4) 256K x 9	NONE	NONE	NONE
2MB	(4) 256K x 9	(4) 256K x 9	NONE	NONE
3MB	(4) 256K x 9	(4) 256K x 9	(4) 256K x 9	NONE
4MB	(4) 256K x 9	(4) 256K x 9	(4) 256K x 9	(4) 256K x 9
4MB	(4) 1M x 9	NONE	NONE	NONE
5MB	(4) 256K x 9	(4) 1M x 9	NONE	NONE
6MB	(4) 256K x 9	(4) 256K x 9	(4) 1M x 9	NONE
7MB	(4) 256K x 9	(4) 256K x 9	(4) 256K x 9	(4) 1M x 9
8MB	(4) 1M x 9	(4) 1M x 9	NONE	NONE
9MB	(4) 256K x 9	(4) 1M x 9	(4) 1M x 9	NONE
10MB	(4) 256K x 9	(4) 256K x 9	(4) 1M x 9	(4) 1M x 9
12MB	(4) 1M x 9	(4) 1M x 9	(4) 1M x 9	NONE
13MB	(4) 256K x 9	(4) 1M x 9	(4) 1M x 9	(4) 1M x 9
16MB	(4) 1M x 9	(4) 1M x 9	(4) 1M x 9	(4) 1M x 9
16MB	(4) 4M x 9	NONE	NONE	NONE
20MB	(4) 1M x 9	(4) 4M x 9	NONE	NONE
24MB	(4) 1M x 9	(4) 1M x 9	(4) 4M x 9	NONE
28MB	(4) 1M x 9	(4) 1M x 9	(4) 1M x 9	(4) 4M x 9
32MB	(4) 4M x 9	(4) 4M x 9	NONE	NONE
36MB	(4) 1M x 9	(4) 4M x 9	(4) 4M x 9	NONE
40MB	(4) 1M x 9	(4) 1M x 9	(4) 4M x 9	(4) 4M x 9

Continued on next page ...

# MICRONICS COMPUTERS, INC.

## 80486 ASIC ISA

... continued from previous page

### DRAM CONFIGURATION (CON'T)

Size	Bank 0	Bank 1	Bank 2	Bank 3
48MB	(4) 4M x 9	(4) 4M x 9	(4) 4M x 9	NONE
52MB	(4) 1M x 9	(4) 4M x 9	(4) 4M x 9	(4) 4M x 9
64MB	(4) 4M x 9	(4) 4M x 9	(4) 4M x 9	(4) 4M x 9

Note: If using 16MB or more you must disable BIOS shadowing.

### DRAM SWITCH CONFIGURATION

Size	SW2/1	SW2/2	SW2/3	SW2/4	SW2/5
1MB	On	On	On	On	On
2MB	Off	On	On	On	On
3MB	On	Off	On	On	On
4MB	Off	Off	On	On	On
4MB	On	On	Off	On	On
5MB	On	On	Off	Off	On
6MB	On	Off	On	Off	On
7MB	Off	On	On	Off	On
8MB	Off	On	Off	On	On
9MB	On	Off	Off	Off	On
10MB	Off	Off	On	Off	On
12MB	On	Off	Off	On	On
13MB	Off	Off	Off	Off	On
16MB	Off	Off	Off	On	On
16MB	On	On	Off	On	Off
20MB	On	On	Off	Off	Off
24MB	On	Off	On	Off	Off
28MB	Off	On	On	Off	Off
32MB	Off	On	Off	On	Off
36MB	On	Off	Off	Off	Off
40MB	Off	Off	On	Off	Off
48MB	On	Off	Off	On	Off
52MB	Off	Off	Off	Off	Off
64MB	Off	Off	Off	On	Off

### CACHE CONFIGURATION

Size	Bank 0	Bank 1
64KB	(4) 8K x 8	(4) 8K x 8
128KB	(4) 32K x 8	NONE
256KB	(4) 32K x 8	(4) 32K x 8

### CACHE JUMPER/SWITCH CONFIGURATION

Size	SW2/7	SW2/8	W5	W6
64KB	Off	Off	Open	Open
128KB	On	On	Closed	Open
256KB	Off	On	Closed	Closed