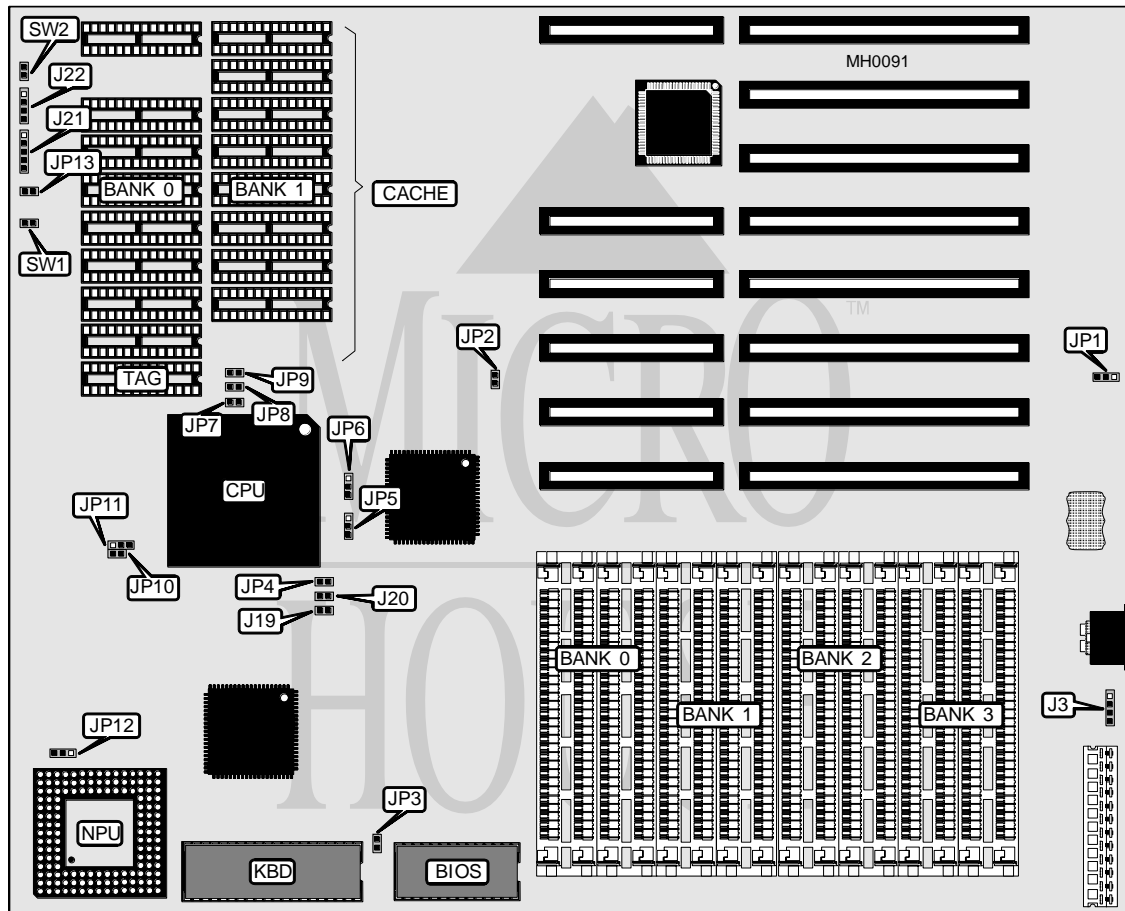


ZYTEX COMPUTERS, INC.

486-33/50 CACHE

Processor	80486DX
Processor Speed	33/50MHz
Chip Set	OPTI
Max. Onboard DRAM	64MB
Cache	64/128/256/512KB
BIOS	AMI
Dimensions	330mm x 266mm
I/O Options	None
NPU Options	4167



CONNECTIONS			
Purpose	Location	Purpose	Location
External battery	J3	Turbo LED	JP13
Power LED & keylock	J21	Turbo switch	SW1
Speaker	J22	Reset switch	SW2

Continued on next page . . .

ZYTEX COMPUTERS, INC.

486-33/50 CACHE

... continued from previous page

USER CONFIGURABLE SETTINGS

Function	Jumper	Position
í CMOS memory normal operation	JP1	pins 2 & 3 closed
CMOS memory clear	JP1	pins 1 & 2 closed
í Bus speed select CLKI/4	JP2	Open
Bus speed select CLKI/6	JP2	Closed
í Monitor type select monochrome	JP3	Open
Monitor type select color	JP3	Closed
í CPU speed select iOSC	JP12	pins 1 & 2 closed
CPU speed select iOSC/2	JP12	pins 2 & 3 closed

DRAM CONFIGURATION

Size	Bank 0	Bank 1	Bank 2	Bank 3
1MB	(4) 256K x 9	NONE	NONE	NONE
2MB	(4) 256K x 9	(4) 256K x 9	NONE	NONE
4MB	(4) 1M x 9	NONE	NONE	NONE
5MB	(4) 256K x 9	(4) 1M x 9	NONE	NONE
6MB	(4) 256K x 9	(4) 256K x 9	(4) 1M x 9	NONE
8MB	(4) 1M x 9	(4) 1M x 9	NONE	NONE
9MB	(4) 256K x 9	(4) 1M x 9	(4) 1M x 9	NONE
10MB	(4) 256K x 9	(4) 256K x 9	(4) 1M x 9	(4) 1M x 9
12MB	(4) 1M x 9	(4) 1M x 9	(4) 1M x 9	NONE
13MB	(4) 256K x 9	(4) 1M x 9	(4) 1M x 9	(4) 1M x 9
16MB	(4) 1M x 9	(4) 1M x 9	(4) 1M x 9	(4) 1M x 9
16MB	(4) 4M x 9	NONE	NONE	NONE
20MB	(4) 1M x 9	(4) 4M x 9	NONE	NONE
24MB	(4) 1M x 9	(4) 1M x 9	(4) 4M x 9	NONE
28MB	(4) 1M x 9	(4) 1M x 9	(4) 1M x 9	(4) 4M x 9
32MB	(4) 4M x 9	(4) 4M x 9	NONE	NONE
36MB	(4) 4M x 9	(4) 4M x 9	(4) 1M x 9	NONE
40MB	(4) 1M x 9	(4) 1M x 9	(4) 4M x 9	(4) 4M x 9
48MB	(4) 4M x 9	(4) 4M x 9	(4) 4M x 9	NONE
52MB	(4) 4M x 9	(4) 4M x 9	(4) 4M x 9	(4) 1M x 9
64MB	(4) 4M x 9	(4) 4M x 9	(4) 4M x 9	(4) 4M x 9

CACHE CONFIGURATION

Size	Bank 0	Bank 1	TAG
64KB	(8) 8K x 8	NONE	(1) 8K x 8
128KB	(8) 8K x 8	(8) 8K x 8	(1) 8K x 8
256KB	(8) 32K x 8	NONE	(1) 32K x 8
512KB	(8) 32K x 8	(8) 32K x 8	(1) 32K x 8

Continued on next page ...

ZYTEX COMPUTERS, INC.

486-33/50 CACHE

... continued from previous page

CACHE JUMPER CONFIGURATION					
Size	JP7	JP8	JP9	JP10	JP11
64KB	Open	Open	Open	Open	pins 2 & 3 closed
128KB	Open	Open	Closed	Closed	pins 2 & 3 closed
256KB	Open	Closed	Closed	Closed	pins 2 & 3 closed
512KB	Closed	Closed	Closed	Closed	pins 1 & 2 closed

CPU TYPE CONFIGURATION			
Type	JP4	JP5	JP6
80486SX	Open	pins 2 & 3 closed	N/A
80487SX	Closed	pins 1 & 2 closed	pins 1 & 2 closed
80486DX	Closed	pins 1 & 2 closed	pins 2 & 3 closed