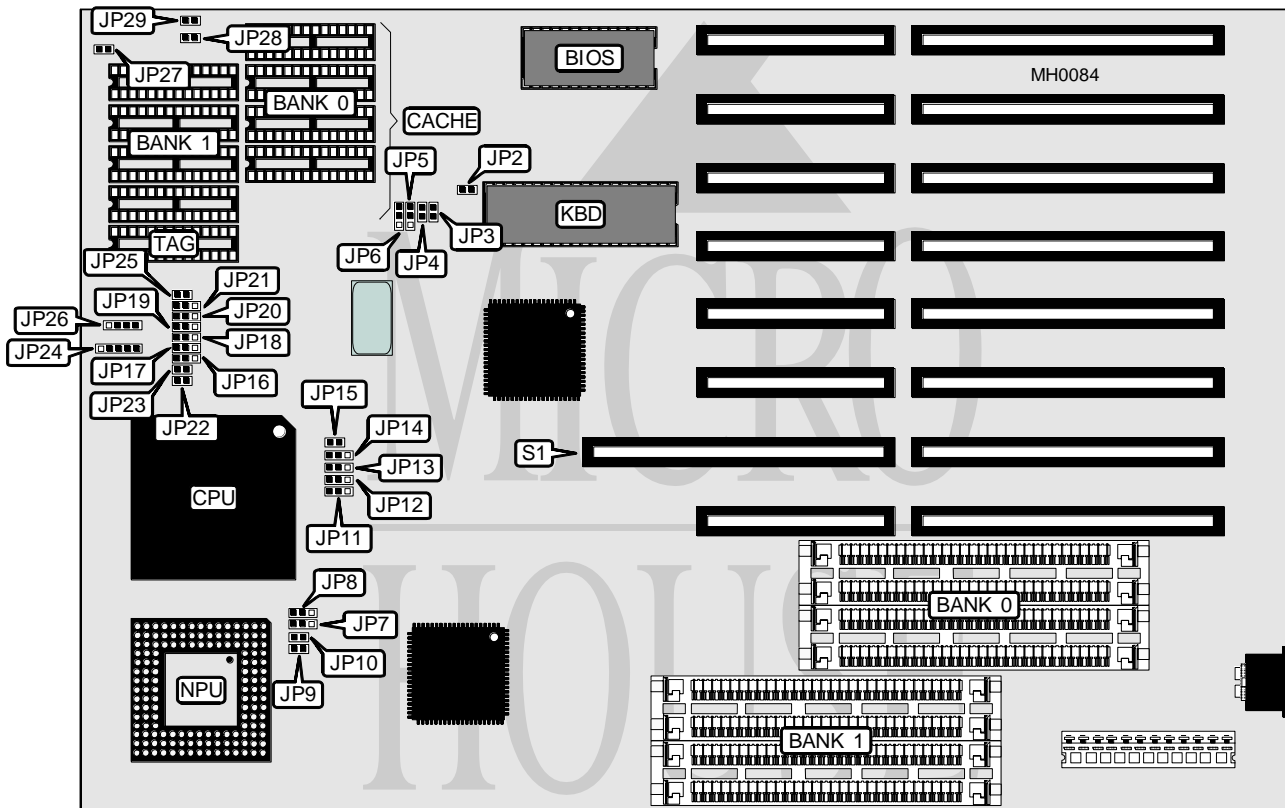


# HAWK COMPUTERS

## 486 CACHE SERIES

**Processor** 80486DX  
**Processor Speed** 33MHz  
**Chip Set** Symphony  
**Max. Onboard DRAM** 32MB  
**Cache** 64/128/256/1024KB  
**BIOS** AMI  
**Dimensions** 330mm x 218mm  
**I/O Options** 32-bit external memory card slot  
**NPU Options** 4167



CONNECTIONS			
Purpose	Location	Purpose	Location
Power LED & keylock	JP24	Turbo switch	JP28
Speaker	JP26	Turbo LED	JP29
Reset switch	JP27	32-bit external memory card	S1

Continued on next page . . .

# HAWK COMPUTERS

## 486 CACHE SERIES

... continued from previous page

USER CONFIGURABLE SETTINGS		
Function	Jumper	Position
í Factory configured - do not alter	JP2	N/A
í Factory configured - do not alter	JP7	N/A
í Factory configured - do not alter	JP8	N/A
í Factory configured - do not alter	JP9	N/A
í Factory configured - do not alter	JP10	N/A
í Factory configured - do not alter	JP15	N/A
í Factory configured - do not alter	JP16	N/A
í Factory configured - do not alter	JP22	N/A
í Factory configured - do not alter	JP23	N/A

DRAM CONFIGURATION		
Size	Bank 0	Bank 1
1MB	(4) 256K x 9	NONE
2MB	(4) 256K x 9	(4) 256K x 9
4MB	(4) 1M x 9	NONE
5MB	(4) 1M x 9	(4) 256K x 9
8MB	(4) 1M x 9	(4) 1M x 9
16MB	(4) 4M x 9	NONE
17MB	(4) 4M x 9	(4) 256K x 9
20MB	(4) 4M x 9	(4) 1M x 9
32MB	(4) 4M x 9	(4) 4M x 9

CACHE CONFIGURATION			
Size	Bank 0	Bank 1	TAG
64KB	(4) 8K x 8	(4) 8K x 8	(1) 8K x 8
128KB	(4) 32K x 8	NONE	(1) 8K x 8
256KB	(4) 32K x 8	(4) 32K x 8	(1) 32K x 8
1024KB	(4) 128K x 8	(4) 128K x 8	(1) 128K x 8

CACHE JUMPER CONFIGURATION							
Size	JP3	JP4	JP5	JP6	JP11	JP12	JP13
64KB	Closed	Open	2 & 3	2 & 3	1 & 2	1 & 2	1 & 2
128KB	Closed	Open	1 & 2	1 & 2	2 & 3	1 & 2	1 & 2
256KB	Closed	Open	2 & 3	2 & 3	2 & 3	2 & 3	1 & 2
1024KB	Closed	Open	2 & 3	2 & 3	2 & 3	2 & 3	2 & 3

Note: Pins designated should be in the closed position.

CACHE JUMPER CONFIGURATION (CON'T)							
Size	JP14	JP17	JP18	JP19	JP20	JP21	JP25
64KB	1 & 2	1 & 2	2 & 3	2 & 3	2 & 3	2 & 3	Open
128KB	1 & 2	Open	1 & 2	1 & 2	1 & 2	1 & 2	Closed
256KB	1 & 2	2 & 3	2 & 3	2 & 3	2 & 3	2 & 3	Open
1024KB	2 & 3	2 & 3	2 & 3	2 & 3	2 & 3	2 & 3	Open

Note: Pins designated should be in the closed position.