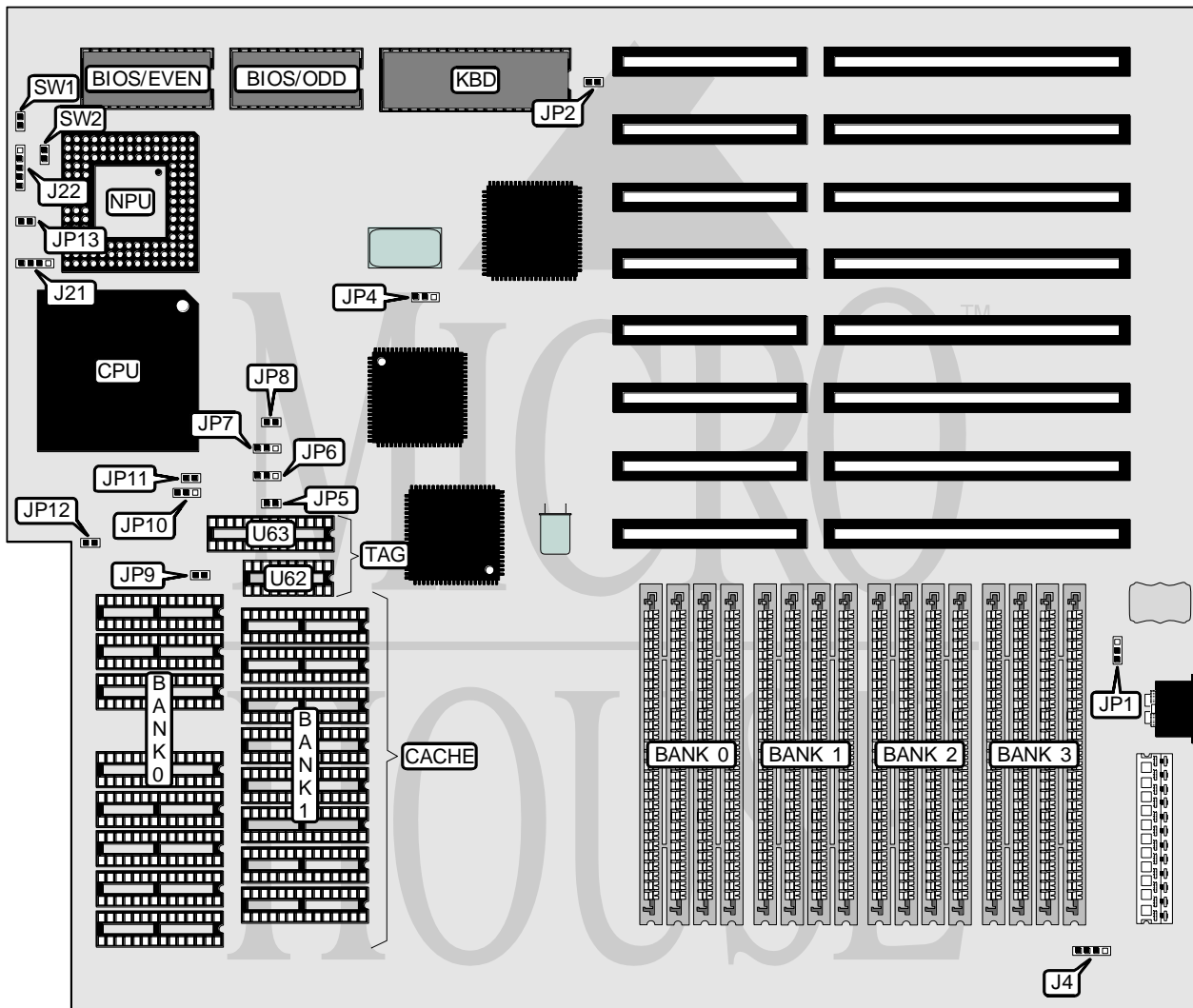


HAWK COMPUTERS

486WB 25/33 CS

Processor	80486SX/80487SX/80486DX
Processor Speed	25/33MHz
Chip Set	OPTI
Max. Onboard DRAM	32MB
Cache	64/128/256/512KB
BIOS	AMI
Dimensions	355mm x 308mm
I/O Options	None
NPU Options	4167



CONNECTIONS

Purpose	Location	Purpose	Location
External battery	J4	Turbo LED	JP13
Power LED & keylock	J22	Reset switch	SW1
Speaker	J21	Turbo switch	SW2

Continued on next page . . .

HAWK COMPUTERS

486WB 25/33 CS

... continued from previous page

USER CONFIGURABLE SETTINGS		
Function	Jumper	Position
í CMOS memory normal operation	JP1	pins 2 & 3 closed
CMOS memory clear	JP1	pins 1 & 2 closed
í Monitor type select color	JP2	Closed
Monitor type select monochrome	JP2	Open

DRAM CONFIGURATION				
Size	Bank 0	Bank 1	Bank 2	Bank 3
1MB	(4) 256K x 9	NONE	NONE	NONE
2MB	(4) 256K x 9	(4) 256K x 9	NONE	NONE
3MB	(4) 256K x 9	(4) 256K x 9	NONE	NONE
4MB	(4) 1M x 9	(4) 256K x 9	(4) 256K x 9	(4) 256K x 9
8MB	(4) 1M x 9	(4) 1M x 9	NONE	NONE
12MB	(4) 1M x 9	(4) 1M x 9	(4) 1M x 9	NONE
16MB	(4) 4M x 9	(4) 1M x 9	(4) 1M x 9	(4) 1M x 9
32MB	(4) 4M x 9	(4) 4M x 9	NONE	NONE
48MB	(4) 4M x 9	(4) 4M x 9	(4) 4M x 9	NONE
64MB	(4) 4M x 9	(4) 4M x 9	(4) 4M x 9	(4) 4M x 9

CACHE CONFIGURATION				
Size	Bank 0	Bank 1	TAG (U62)	TAG (U63)
64KB	(8) 8K x 8	NONE	(1) 16K x 1	(1) 8K x 8
128KB	(8) 8K x 8	(8) 8K x 8	(1) 16K x 1	(1) 8K x 8
256KB	(8) 32K x 8	NONE	(1) 16K x 1	(1) 32K x 8
512KB	(8) 32K x 8	(8) 32K x 8	(1) 16K x 1	(1) 32K x 8

CACHE JUMPER CONFIGURATION					
Size	JP5	JP9	JP10	JP11	JP12
64KB	Open	Open	pins 2 & 3 closed	Open	Open
128KB	Open	Closed	pins 2 & 3 closed	Closed	Open
256KB	Open	Closed	pins 2 & 3 closed	Closed	Closed
512KB	Closed	Closed	pins 2 & 3 closed	Closed	Closed

CPU JUMPER CONFIGURATION			
Type	JP6	JP7	JP8
80486SX	pins 2 & 3 closed	pins 2 & 3 closed	Open
80487SX	pins 1 & 2 closed	pins 2 & 3 closed	Closed
80486DX	pins 1 & 2 closed	pins 1 & 2 closed	Closed