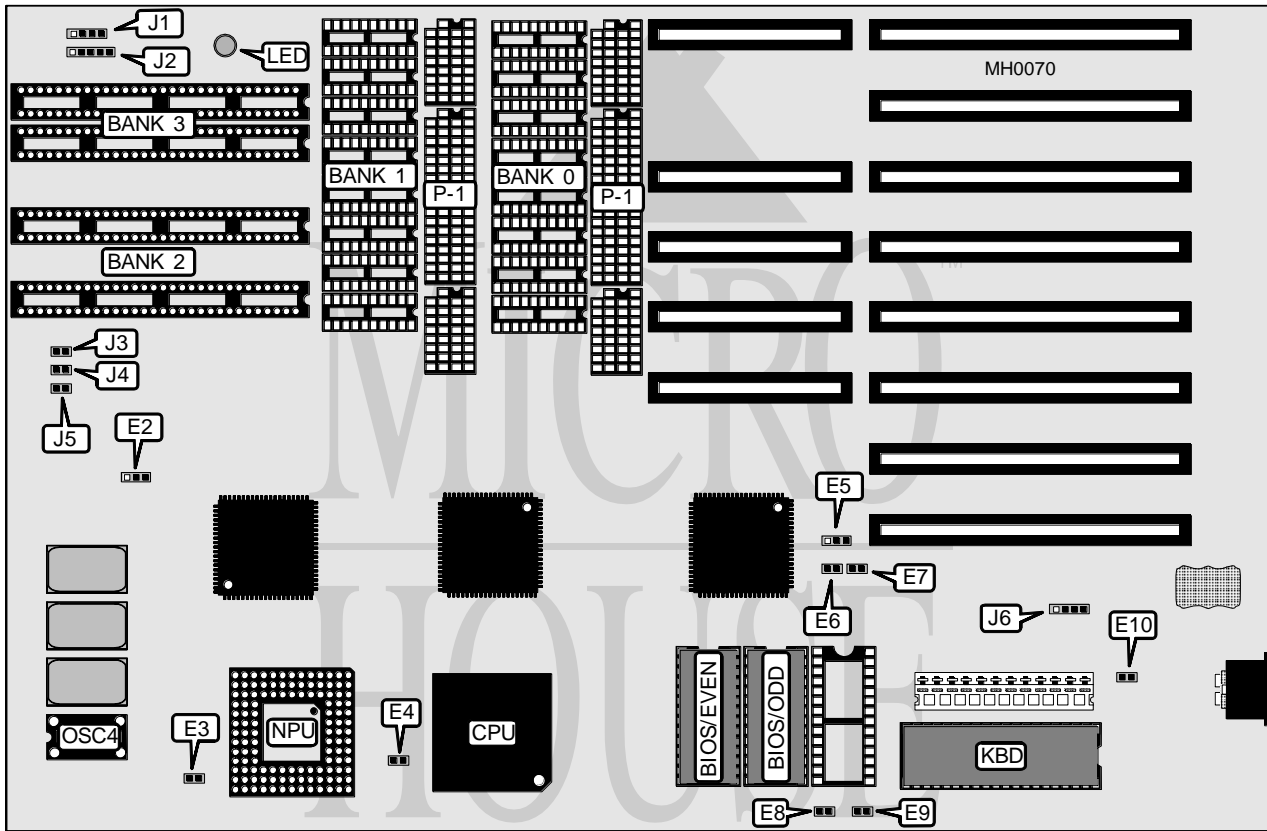


ABC COMPUTER COMPANY, LTD.

A 3 8 6 0

Processor	80386DX
Processor Speed	25/33MHz
Chip Set	Intel/VLSI
Max. Onboard DRAM	40MB
Cache	None
BIOS	AMI
Dimensions	330.2mm x 218.4mm
I/O Options	None
NPU Options	80387/3167



CONNECTIONS			
Purpose	Location	Purpose	Location
External battery	J6	Turbo LED	J5
Power LED & keylock	J2	Reset switch	J3
Speaker	J1	Turbo switch	J4

Continued on next page . . .

ABC COMPUTER COMPANY, LTD.

A3860

... continued from previous page

USER CONFIGURABLE SETTINGS		
Function	Jumper	Position
í NPU type select 80387 or none	E2	pins 2 & 3 closed
NPU type select 3167	E2	pins 1 & 2 closed
í NPU mode select synchronous with CPU	E3	Open
NPU mode select asynchronous with CPU	E3	Closed
í Pipeline mode enabled	E4	Closed
Pipeline mode disabled	E4	Open
í Reset enabled	E5	pins 2 & 3 closed
Reset enabled only when keyboard is locked	E5	pins 1 & 2 closed
í CMOS memory normal operation	E6	Closed
CMOS memory clear	E6	Open
í CMOS memory normal operation	E7	Open
CMOS memory clear	E7	Closed
í BIOS type select 8-bit	E8	Closed
BIOS type select 16-bit	E8	Open
í Factory configured - do not alter	E9	Open
í Monitor type select color	E10	Closed
Monitor type select monochrome	E10	Open

DRAM CONFIGURATION							
Size	Batch	Bank 0	Parity (P-0)	Bank 1	Parity (P-1)	Bank 2	Bank 3
1MB	1M	(8) 44256	(4) 41256	NONE	NONE	NONE	NONE
1MB	1MS	NONE	NONE	NONE	NONE	(4) 256K x 9	NONE
2MB	2M	(8) 44256	(4) 41256	(8) 44256	(4) 41256	NONE	NONE
2MB	2MS	NONE	NONE	NONE	NONE	(4) 256K x 9	(4) 256K x 9
3MB	3M	(8) 44256	(4) 41256	(8) 44256	(4) 41256	(4) 256K x 9	NONE
4MB	4MK	(8) 44256	(4) 41256	(8) 44256	(4) 41256	(4) 256K x 9	(4) 256K x 9
4MB	4MM	(8) 441000	(4) 411000	NONE	NONE	NONE	NONE
5MB	5M	(8) 44256	(4) 41256	(8) 441000	(4) 411000	NONE	NONE
6MB	6M	(8) 44256	(4) 41256	(8) 44256	(4) 41256	(4) 1M x 9	NONE
8MB	8M	(8) 441000	(4) 411000	(8) 441000	(4) 411000	NONE	NONE
8MB	8MS	NONE	NONE	NONE	NONE	(4) 1M x 9	(4) 1M x 9
9MB	9M	(8) 441000	(4) 411000	(8) 441000	(4) 411000	(4) 256K x 9	NONE
10MB	10M	(8) 44256	(4) 41256	(8) 44256	(4) 41256	(4) 1M x 9	(4) 1M x 9
12MB	12M	(8) 441000	(4) 411000	(8) 441000	(4) 411000	(4) 1M x 9	NONE
16MB	16M	(8) 441000	(4) 411000	(8) 441000	(4) 411000	(4) 1M x 9	(4) 1M x 9
16MB	16MS	NONE	NONE	NONE	NONE	(4) 4M x 9	NONE
18MB	18M	(8) 44256	(4) 41256	(8) 44256	(4) 41256	(4) 4M x 9	NONE
24MB	24M	(8) 441000	(4) 411000	(8) 441000	(4) 411000	(4) 4M x 9	NONE
32MB	32M	NONE	NONE	NONE	NONE	(4) 4M x 9	(4) 4M x 9
34MB	34M	(8) 44256	(4) 41256	(8) 44256	(4) 41256	(4) 4M x 9	(4) 4M x 9
40MB	40M	(8) 441000	(4) 411000	(8) 441000	(4) 411000	(4) 4M x 9	(4) 4M x 9

Note: After installing memory, run the applicable batch file on your setup disk.
This loads the appropriate values into the chipset.