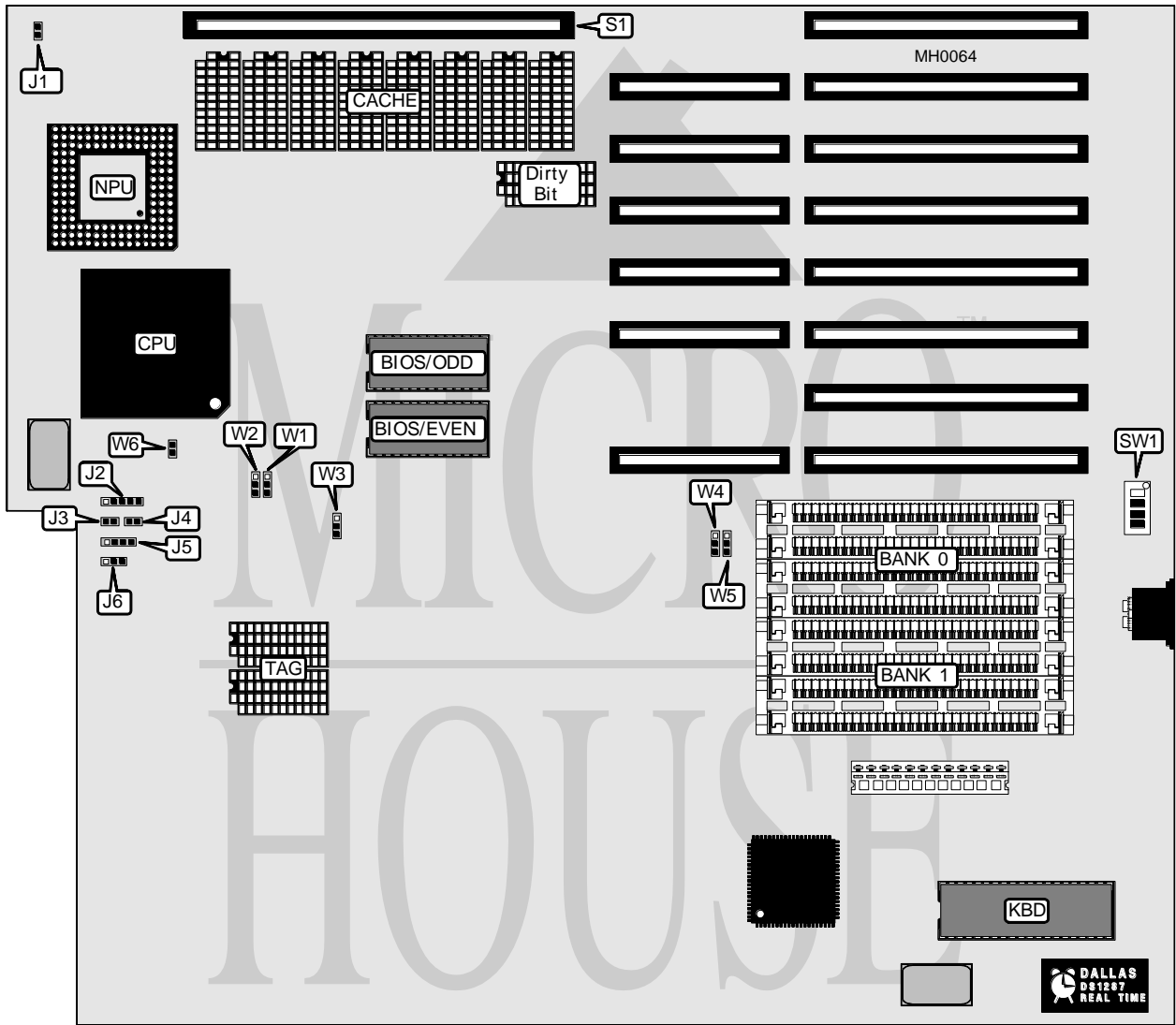


DTK COMPUTER, INC.

PKM-3300 (VER. 1.00)

Processor	80486DX
Processor Speed	25/33MHz
Chip Set	VLSI
Max. Onboard DRAM	16MB (8MB on external memory card)
Cache	64/256KB
BIOS	AMI/DTK
Dimensions	351mm x 296mm
I/O Options	32-bit external memory card slot
NPU Options	4167



CONNECTIONS			
Purpose	Location	Purpose	Location
Secondary fan power	J1	Reset switch	J4
Power LED & keylock	J2	Speaker	J5
Turbo LED	J3	32-bit external memory card	S1

Continued on next page . . .

DTK COMPUTER, INC.
PKM - 3300 (VER. 1.00)

... continued from previous page

USER CONFIGURABLE SETTINGS		
Function	Jumper/Switch	Position
í CPU speed select fast	J6	Open
CPU speed select slow	J6	pins 1 & 2 closed
CPU speed switchable from keyboard	J6	pins 2 & 3 closed
í Monitor type select monochrome	SW1/4	Off
Monitor type select color	SW1/4	On
í BIOS type select 27256	W3	pins 1 & 2 closed
BIOS type select 27512	W3	pins 2 & 3 closed
í Video BIOS shadowing enabled	W6	Closed
Video BIOS shadowing disabled	W6	Open

DRAM CONFIGURATION		
Size	Bank 0	Bank 1
1MB	(4) 256K x 9	NONE
2MB	(4) 256K x 9	(4) 256K x 9
4MB	(4) 1M x 9	NONE
8MB	(4) 1M x 9	(4) 1M x 9

DRAM JUMPER CONFIGURATION		
Size	W4	W5
1MB	pins 2 & 3 closed	pins 2 & 3 closed
2MB	pins 2 & 3 closed	pins 2 & 3 closed
4MB	pins 1 & 2 closed	pins 1 & 2 closed
8MB	pins 1 & 2 closed	pins 1 & 2 closed

DRAM SWITCH CONFIGURATION			
Size	SW1/1	SW1/2	SW1/3
1MB	On	On	On
2MB	On	On	On
4MB	On	On	Off
8MB	On	Off	Off

CACHE CONFIGURATION			
Size	Bank 0	TAG	Dirty Bit
64KB	(8) 16K x 4	(2) 16K x 4	(1) 16K x 1
256KB	(8) 64K x 4	(2) 64K x 4	(1) 64K x 1

CACHE JUMPER CONFIGURATION		
Size	W1	W2
64KB	pins 1 & 2 closed	pins 1 & 2 closed
256KB	pins 2 & 3 closed	pins 2 & 3 closed