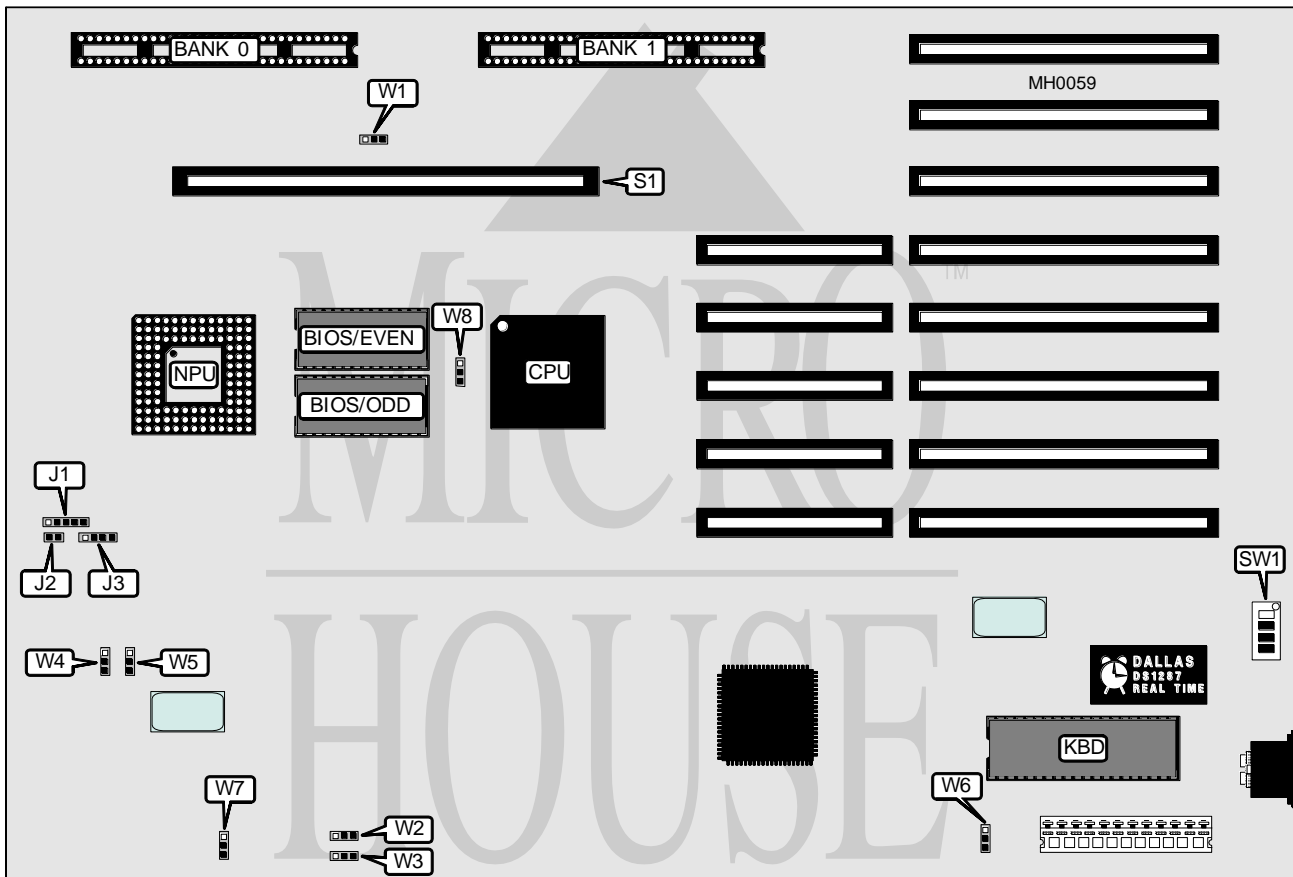


DTK COMPUTER, INC.

P E M - 2 5 3 0

Processor 80386DX
Processor Speed 25MHz
Chip Set VLSI
Max. Onboard DRAM 16MB (8MB on external memory card)
Cache None
BIOS DTK/Phoenix
Dimensions 333mm x 222mm
I/O Options 32-bit external memory card slot (PEI-306)
NPU Options 80387/3167



CONNECTIONS			
Purpose	Location	Purpose	Location
Power LED & keylock	J1	32-bit external memory card	S1
Reset switch	J2	Turbo switch	W4
Speaker	J3	Turbo LED	W5

Continued on next page . . .

DTK COMPUTER, INC.
P E M - 2 5 3 0

... continued from previous page

USER CONFIGURABLE SETTINGS		
Function	Jumper	Position
í DRAM (16-bit) speed select 2 wait state	W2	pins 2 & 3 closed
DRAM (16-bit) speed select 1 wait state	W2	pins 1 & 2 closed
í DRAM (8-bit) speed select 5 wait state	W3	pins 2 & 3 closed
DRAM (8-bit) speed select 4 wait state	W3	pins 1 & 2 closed
í CPU speed select fast	W4	Open
CPU speed select slow	W4	pins 1 & 2 closed
CPU speed switchable from keyboard	W4	pins 2 & 3 closed
í Monitor type select monochrome	W6	pins 1 & 2 closed
Monitor type select color	W6	pins 2 & 3 closed
í NPU disabled	W7	pins 2 & 3 closed
NPU enabled	W7	pins 1 & 2 closed
í BIOS type select 27256	W8	pins 1 & 2 closed
BIOS type select 27512	W8	pins 2 & 3 closed

DRAM CONFIGURATION		
Size	Bank 0	Bank 1
1MB	(2) 256K x 9	(2) 256K x 9
2MB	(2) 512K x 9	(2) 512K x 9
4MB	(2) 1M x 9	(2) 1M x 9
8MB	(1) 1M x 36	(1) 1M x 36
Note: The 1M x 36 SIPPs are a proprietary DTK design that use two SIPP sockets.		

DRAM JUMPER/SWITCH CONFIGURATION					
Size	SW1/1	SW1/2	SW1/3	SW1/4	W1
1MB	On	On	On	On	pins 2 & 3 closed
2MB	On	Off	On	On	pins 2 & 3 closed
4MB	Off	On	On	Off	pins 1 & 2 closed
8MB	Off	Off	Off	On	pins 1 & 2 closed