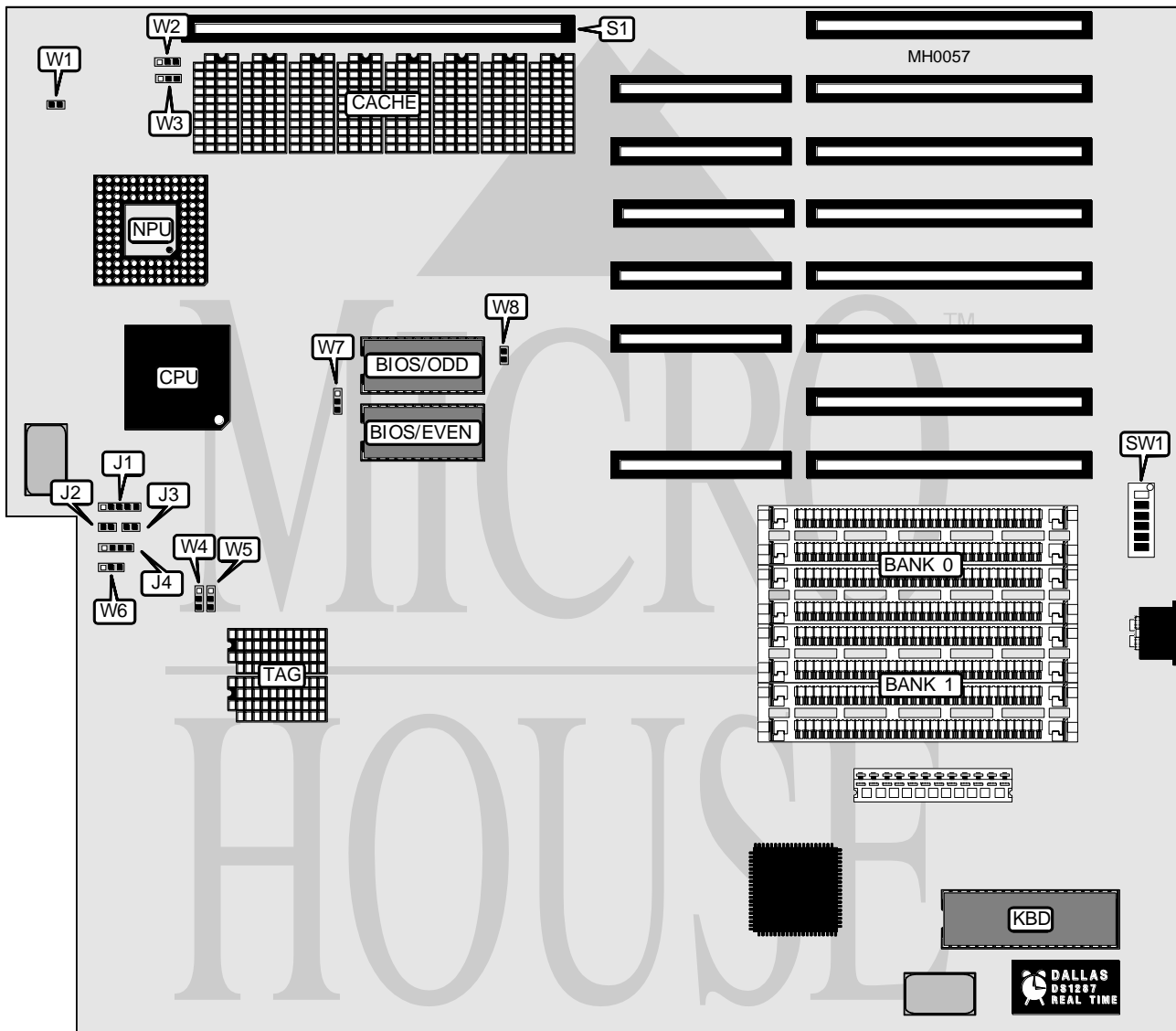


# DTK COMPUTER, INC.

## PEM - 2501 / PEM - 4001

<b>Processor</b>	80386DX
<b>Processor Speed</b>	25/33/40MHz
<b>Chip Set</b>	VLSI
<b>Max. Onboard DRAM</b>	16MB (8MB on external memory card)
<b>Cache</b>	64/256KB
<b>BIOS</b>	AMI/DTK
<b>Dimensions</b>	351mm x 306mm
<b>I/O Options</b>	32-bit external memory card slot (PEI-306)
<b>NPU Options</b>	80387/3167



### CONNECTIONS

Purpose	Location	Purpose	Location
Power LED & keylock	J1	Speaker	J4
Turbo LED	J2	32-bit external memory card	S1
Reset switch	J3	Turbo switch	W6

Continued on next page . . .

**DTK COMPUTER, INC.**  
**P E M - 2 5 0 1 / P E M - 4 0 0 1**

... continued from previous page

USER CONFIGURABLE SETTINGS		
Function	Jumper/Switch	Position
í NPU disabled	W1	Closed
NPU enabled	W1	Open
í CPU speed select fast	W6	Open
CPU speed select slow	W6	pins 1 & 2 closed
CPU speed switchable from keyboard	W6	pins 2 & 3 closed
í BIOS type select 27256	W7	pins 1 & 2 closed
BIOS type select 27512	W7	pins 2 & 3 closed
í DMA speed select 8MHz	W8	Closed
DMA speed select 6MHz	W8	Open
í Monitor type select monochrome	SW1/6	Off
Monitor type select color	SW1/6	On

DRAM CONFIGURATION		
Size	Bank 0	Bank 1
1MB	(4) 256K x 9	NONE
2MB	(4) 256K x 9	(4) 256K x 9
4MB	(4) 1M x 9	NONE
5MB	(4) 256K x 9	(4) 1M x 9
8MB	(4) 1M x 9	(4) 1M x 9

DRAM JUMPER CONFIGURATION							
Size	SW1/1	SW1/2	SW1/3	SW1/4	SW1/5	W2	W3
1MB	On	On	On	On	On	pins 2 & 3 closed	pins 2 & 3 closed
2MB	On	On	On	On	On	pins 2 & 3 closed	pins 2 & 3 closed
4MB	On	On	Off	On	Off	pins 1 & 2 closed	pins 1 & 2 closed
5MB	Off	On	Off	Off	On	pins 2 & 3 closed	pins 1 & 2 closed
8MB	Off	On	Off	Off	Off	pins 1 & 2 closed	pins 1 & 2 closed
12MB	Off	Off	On	N/A	N/A	N/A	N/A
16MB	Off	Off	Off	N/A	N/A	N/A	N/A

CACHE CONFIGURATION		
Size	Bank 0	TAG
64KB	(8) 16K x 4	(2) 16K x 4
256KB	(8) 64K x 4	(2) 64K x 4

CACHE JUMPER CONFIGURATION		
Size	W4	W5
64KB	pins 1 & 2 closed	pins 1 & 2 closed
256KB	pins 2 & 3 closed	pins 2 & 3 closed