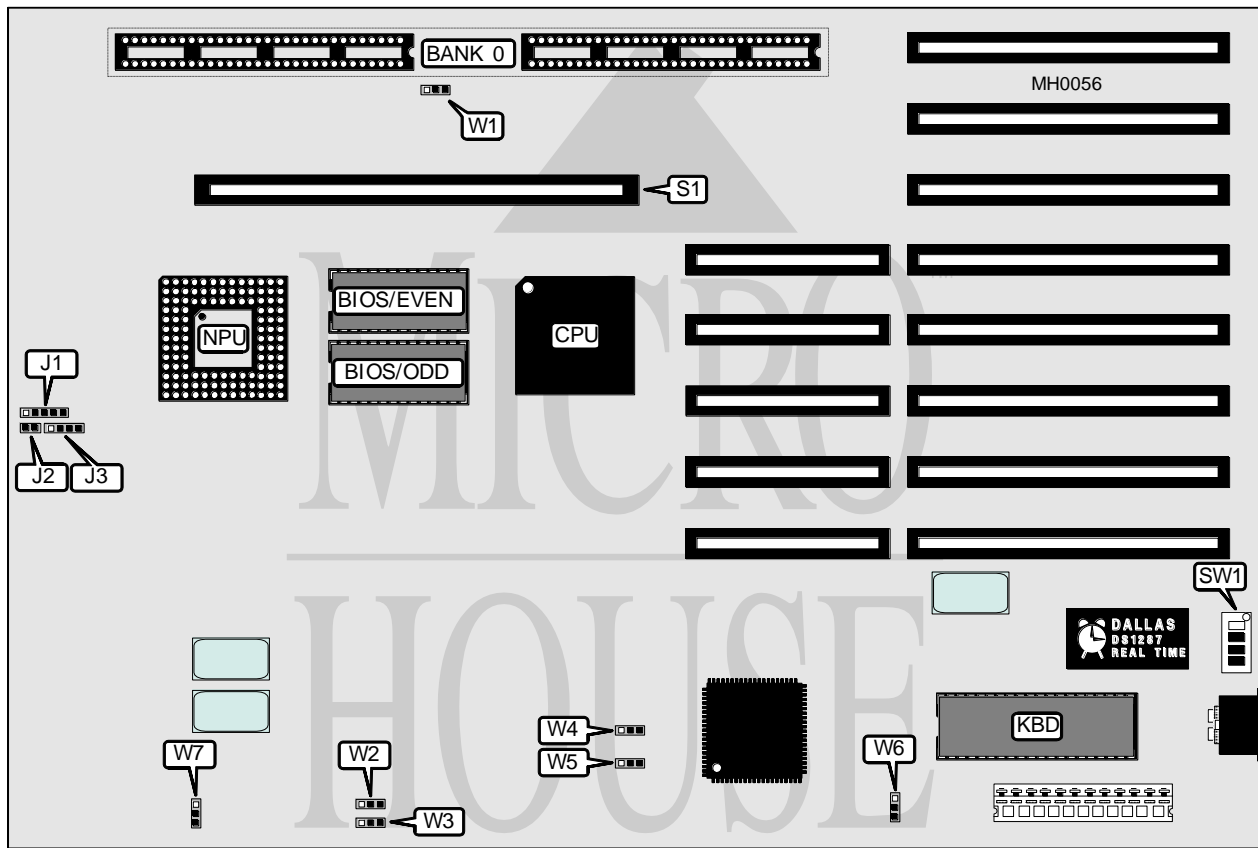


# DTK COMPUTER, INC.

## P E M - 2 0 3 5

**Processor** 80386DX  
**Processor Speed** 20MHz  
**Chip Set** VLSI  
**Max. Onboard DRAM** 16MB (8MB on external memory card)  
**Cache** None  
**BIOS** DTK  
**Dimensions** 333mm x 222.5mm  
**I/O Options** 32-bit external memory card slot (PEI-306)  
**NPU Options** 80387/3167



CONNECTIONS			
Purpose	Location	Purpose	Location
Power LED & keylock	J1	32-bit external memory card	S1
Reset switch	J2	Turbo switch	W4
Speaker	J3	Turbo LED	W5

Continued on next page . . .

# DTK COMPUTER, INC.

## P E M - 2 0 3 5

... continued from previous page

USER CONFIGURABLE SETTINGS		
Function	Jumper	Position
í DRAM (16-bit) speed select 2 wait state	W2	pins 2 & 3 closed
DRAM (16-bit) speed select 1 wait state	W2	pins 1 & 2 closed
í DRAM (8-bit) speed select 5 wait state	W3	pins 2 & 3 closed
DRAM (8-bit) speed select 4 wait state	W3	pins 1 & 2 closed
í CPU speed select 20MHz	W4	Open
CPU speed select 8MHz	W4	pins 1 & 2 closed
CPU speed select switchable from keyboard	W4	pins 2 & 3 closed
í Monitor type select monochrome	W6	pins 1 & 2 closed
Monitor type select color	W6	pins 2 & 3 closed
í NPU disabled	W7	pins 2 & 3 closed
NPU enabled	W7	pins 1 & 2 closed

DRAM CONFIGURATION	
Size	Bank 0
1MB	(4) 256K x 9
2MB	(4) 512K x 9
4MB	(4) 1M x 9

Note: The 512K x 9 SIPP module is a proprietary DTK design.

DRAM JUMPER/SWITCH CONFIGURATION					
Size	SW1/1	SW1/2	SW1/3	SW1/4	W1
1MB	On	On	On	On	pins 2 & 3 closed
2MB	On	Off	On	On	pins 2 & 3 closed
4MB	Off	On	On	Off	pins 1 & 2 closed