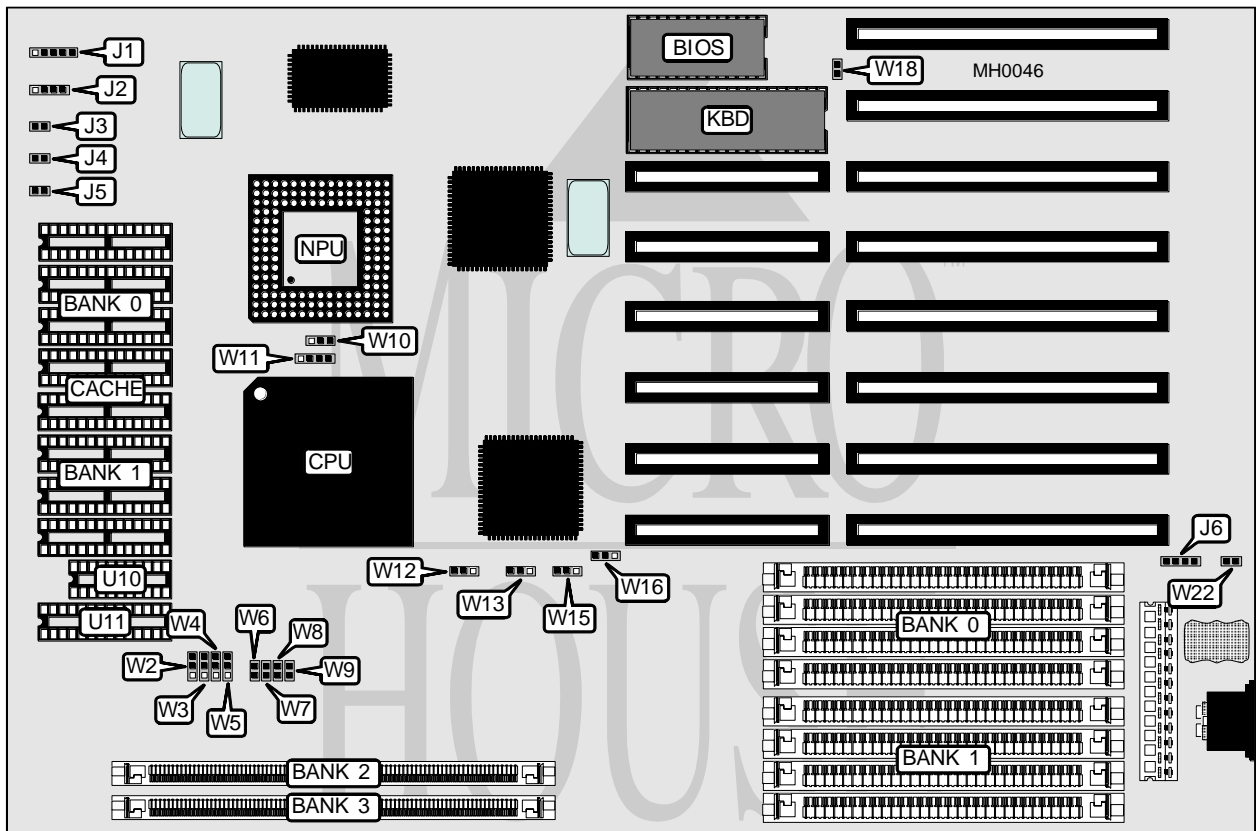


# JPN CORPORATION

## MB-486 DX-33 UM

<b>Processor</b>	80486SX/80487SX/80486DX
<b>Processor Speed</b>	33MHz
<b>Chip Set</b>	UMC
<b>Max. Onboard DRAM</b>	40MB
<b>Cache</b>	64/128/256KB
<b>BIOS</b>	AMI
<b>Dimensions</b>	330mm x 218mm
<b>I/O Options</b>	None
<b>NPU Options</b>	4167



CONNECTIONS			
Purpose	Location	Purpose	Location
Power LED & keylock	J1	Reset switch	J4
Speaker	J2	Turbo LED	J5
Turbo switch	J3	External battery	J6

Continued on next page . . .

## JPN CORPORATION

## MB-486 DX-33 UM

... continued from previous page

## USER CONFIGURABLE SETTINGS

Function	Jumper	Position
í Monitor type select CGA	W18	Closed
Monitor type select monochrome/EGA/VGA	W18	Open
í Battery select internal	W22	Closed
Battery select external	W22	Open

## DRAM CONFIGURATION

Size	Bank 0	Bank 1	Bank 2	Bank 3
1MB <sup>1</sup>	(4) 256K x 9	NONE	NONE	NONE
1MB <sup>2</sup>	NONE	NONE	(1) 256K x 36	NONE
2MB <sup>1</sup>	(4) 256K x 9	(4) 256K x 9	NONE	NONE
2MB <sup>2</sup>	NONE	NONE	(1) 256K x 36	(1) 256K x 36
3MB <sup>1</sup>	(4) 256K x 9	(4) 256K x 9	(1) 256K x 36	NONE
3MB <sup>2</sup>	(4) 256K x 9	NONE	(1) 256K x 36	(1) 256K x 36
4MB <sup>1</sup>	(4) 256K x 9	(4) 256K x 9	(1) 256K x 36	(1) 256K x 36
4MB <sup>2</sup>	(4) 256K x 9	(4) 256K x 9	(1) 256K x 36	(1) 256K x 36
4MB <sup>1</sup>	(4) 1M x 9	NONE	NONE	NONE
4MB <sup>2</sup>	NONE	NONE	(1) 1M x 36	NONE
5MB <sup>1</sup>	(4) 256K x 9	(4) 1M x 9	NONE	NONE
5MB <sup>2</sup>	NONE	NONE	(1) 256K x 36	(1) 1M x 36
6MB <sup>1</sup>	(4) 256K x 9	(4) 256K x 9	(1) 1M x 36	NONE
6MB <sup>2</sup>	(4) 1M x 9	NONE	(1) 256K x 36	(1) 256K x 36
8MB <sup>1</sup>	(4) 1M x 9	(4) 1M x 9	NONE	NONE
8MB <sup>2</sup>	NONE	NONE	(1) 1M x 36	(1) 1M x 36
9MB <sup>1</sup>	(4) 256K x 9	(4) 1M x 9	(1) 1M x 36	NONE
9MB <sup>2</sup>	(4) 1M x 9	NONE	(1) 256K x 36	(1) 1M x 36
10MB <sup>1</sup>	(4) 256K x 9	(4) 256K x 9	(1) 1M x 36	(1) 1M x 36
10MB <sup>2</sup>	(4) 1M x 9	(4) 1M x 9	(1) 256K x 36	(1) 256K x 36
12MB <sup>1</sup>	(4) 1M x 9	(4) 1M x 9	(1) 1M x 36	NONE
12MB <sup>2</sup>	(4) 1M x 9	NONE	(1) 1M x 36	(1) 1M x 36
16MB <sup>1</sup>	(4) 1M x 9	(4) 1M x 9	(1) 1M x 36	(1) 1M x 36
16MB <sup>2</sup>	(4) 1M x 9	(4) 1M x 9	(1) 1M x 36	(1) 1M x 36
16MB <sup>1</sup>	(4) 4M x 9	NONE	NONE	NONE
16MB <sup>2</sup>	NONE	NONE	(1) 4M x 36	NONE
20MB <sup>1</sup>	(4) 1M x 9	(4) 4M x 9	NONE	NONE
20MB <sup>2</sup>	NONE	NONE	(1) 1M x 36	(1) 4M x 36
24MB <sup>1</sup>	(4) 1M x 9	(4) 1M x 9	(1) 4M x 36	NONE
24MB <sup>2</sup>	(4) 4M x 9	NONE	(1) 1M x 36	(1) 1M x 36
32MB <sup>1</sup>	(4) 4M x 9	(4) 4M x 9	NONE	NONE
32MB <sup>2</sup>	NONE	NONE	(1) 4M x 36	(1) 4M x 36
40MB <sup>1</sup>	(4) 1M x 9	(4) 1M x 9	(1) 4M x 36	(1) 4M x 36
40MB <sup>2</sup>	(4) 4M x 9	(4) 4M x 9	(1) 1M x 36	(1) 1M x 36

Note <sup>1</sup> : On jumpers W12, W13, W15, and W16 - pins 1 & 2 should be in the closed position.Note <sup>2</sup> : On jumpers W12, W13, W15, and W16 - pins 2 & 3 should be in the closed position.

Continued on next page ...

# JPN CORPORATION

## MB-486 DX-33 UM

... continued from previous page

CACHE CONFIGURATION				
Size	Bank 0	Bank 1	Dirty Bit (U10)	TAG (U11)
64KB	(4) 8K x 8	(4) 8K x 8	(1) 16K x 8	(1) 8K x 8
128KB	(4) 32K x 8	NONE	(1) 16K x 8	(1) 8K x 8
256KB	(4) 32K x 8	(4) 32K x 8	(1) 16K x 8	(1) 32K x 8

CACHE JUMPER CONFIGURATION								
Size	W2	W3	W4	W5	W6	W7	W8	W9
64KB	1 & 2	1 & 2	Open	1 & 2	Open	Open	Open	Open
128KB	2 & 3	1 & 2	1 & 2	2 & 3	Closed	Open	Open	Open
256KB	2 & 3	2 & 3	2 & 3	1 & 2	Closed	Closed	Closed	Closed

Note: Pins designated should be in the closed position.

CPU TYPE CONFIGURATION		
Type	W10	W11
80486SX	Open	pins 2 & 3 closed
80487SX	pins 2 & 3 closed	pins 1 & 2 and 3 & 4 closed
80486DX	pins 1 & 2 closed	pins 1 & 2 and 3 & 4 closed