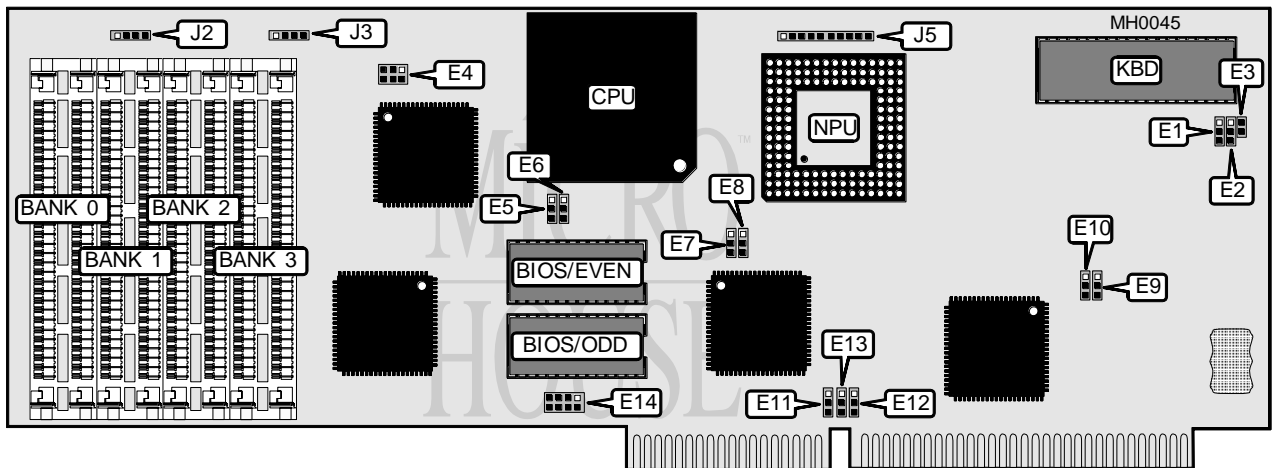


QUALOGY, INC.

Q P C - 5 1 6 0

Processor	80486DX
Processor Speed	25/33MHz
Chip Set	VLSI
Max. Onboard DRAM	32MB
Cache	64/128KB
BIOS	Phoenix
Dimensions	338mm x 120mm
I/O Options	None
NPU Options	4167



CONNECTIONS			
Purpose	Location	Purpose	Location
Speaker	J2	SPKRF	J5/pin 5
External battery	J3	PWRGD	J5/pin 6
LEDPWR	J5/pin 1	KBDPWRF	J5/pin 7
KBDINH	J5/pin 2	KBDGND	J5/pin 8
RETSW	J5/pin 3	KBDDATF	J5/pin 9
GND	J5/pin 4	KBDCLKF	J5/pin 10

Continued on next page . . .

QUALOGY, INC.
Q P C - 5 1 6 0

... continued from previous page

USER CONFIGURABLE SETTINGS		
Function	Jumper	Position
í Bus mouse disabled	E1	pins 2 & 3 closed
Bus mouse enabled	E1	pins 1 & 2 closed
í Battery select internal	E2	pins 1 & 2 closed
Battery select external	E2	pins 2 & 3 closed
í Test mode disabled	E3	Open
Test mode enabled	E3	Closed
í Factory configured - do not alter	E5	pins 1 & 2 closed
í Factory configured - do not alter	E6	pins 1 & 2 closed
í Factory configured - do not alter	E7	pins 2 & 3 closed
í Factory configured - do not alter	E9	pins 1 & 2 closed
í Power good signal detect from board	E10	pins 2 & 3 closed
Power good signal detect from power supply	E10	pins 1 & 2 closed
í Factory configured - do not alter	E11	N/A
í Factory configured - do not alter	E12	pins 1 & 2 closed
í Factory configured - do not alter	E13	pins 1 & 2 closed
í BIOS type select 27256	E14	pins 3 & 4 closed
BIOS type select 27512	E14	pins 1 & 2 closed
BIOS type select 27128	E14	pins 5 & 6 closed

DRAM CONFIGURATION				
Size	Bank 0	Bank 1	Bank 2	Bank 3
1MB	(2) 256K x 9	(2) 256K x 9	NONE	NONE
2MB	(2) 256K x 9	(2) 256K x 9	(2) 256K x 9	(2) 256K x 9
4MB	(2) 1M x 9	(2) 1M x 9	NONE	NONE
5MB	(2) 256K x 9	(2) 256K x 9	(2) 1M x 9	(2) 1M x 9
8MB	(2) 1M x 9	(2) 1M x 9	(2) 1M x 9	(2) 1M x 9
16MB	(2) 4M x 9	(2) 4M x 9	NONE	NONE
17MB	(2) 256K x 9	(2) 256K x 9	(2) 4M x 9	(2) 4M x 9
20MB	(2) 1M x 9	(2) 1M x 9	(2) 4M x 9	(2) 4M x 9
32MB	(2) 4M x 9	(2) 4M x 9	(2) 4M x 9	(2) 4M x 9

CACHE CONFIGURATION	
Size	Cache (U19 & U20)
64KB	(2) 32K x 8 (ZIP)
128KB	(2) 64K x 8 (ZIP)
Note: Location and size of cache chips are unknown.	

CACHE JUMPER CONFIGURATION			
Size	Cache Organization	E4	E8
64KB	Direct-Mapped	pins 2 & 4 closed	pins 2 & 3 closed
128KB	Direct-Mapped	pins 1 & 3 closed	pins 1 & 2 closed
128KB	2-Way Set-Associative	pins 1 & 3 closed	pins 2 & 3 closed