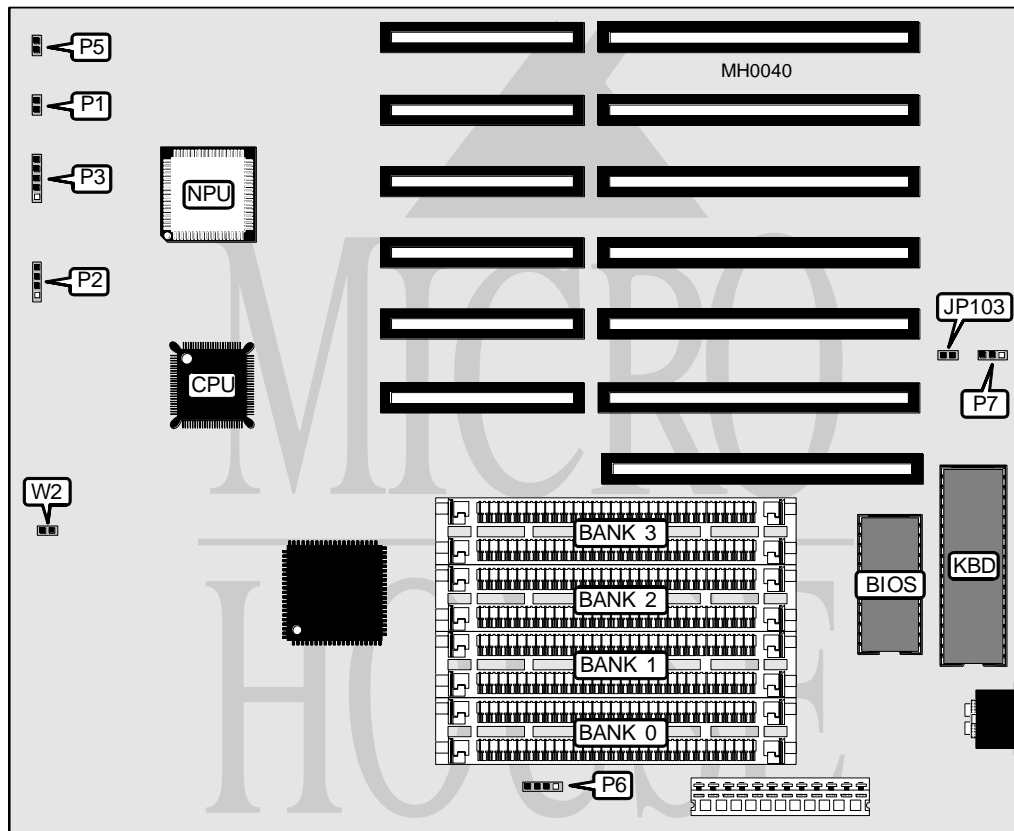


# FORCOM TECHNOLOGY CORPORATION

## B 6 3 7 / B 6 3 8 / B 6 3 9

<b>Processor</b>	80386SX
<b>Processor Speed</b>	16/20/25MHz
<b>Chip Set</b>	Headland
<b>Max. Onboard DRAM</b>	8MB
<b>Cache</b>	None
<b>BIOS</b>	AMI/Quadtel
<b>Dimensions</b>	246.6mm x 216.8mm
<b>I/O Options</b>	None
<b>NPU Options</b>	80387SX



CONNECTIONS			
Purpose	Location	Purpose	Location
Turbo LED	P1	Reset switch	P5
Speaker	P2	External battery	P6
Power LED & Keylock	P3	Turbo switch	W2

Continued on next page . . .

**FORCOM TECHNOLOGY CORPORATION****B 6 3 7 / B 6 3 8 / B 6 3 9**

... continued from previous page

**USER CONFIGURABLE SETTINGS**

Function	Jumper	Position
í Monitor type select monochrome	JP103	Open
Monitor type select color	JP103	Closed
í Power good signal detect from board	P7	pins 1 & 2 closed
Power good signal detect from power supply	P7	pins 2 & 3 closed

**DRAM CONFIGURATION**

Size	Bank 0	Bank 1	Bank 2	Bank 3
512KB	(2) 256K x 9	NONE	NONE	NONE
1MB	(2) 256K x 9	(2) 256K x 9	NONE	NONE
1.5MB	(2) 256K x 9	(2) 256K x 9	(2) 256K x 9	NONE
2MB	(2) 256K x 9	(2) 256K x 9	(2) 256K x 9	(2) 256K x 9
2MB	(2) 1M x 9	NONE	NONE	NONE
3MB	(2) 256K x 9	(2) 256K x 9	(2) 1M x 9	NONE
4MB	(2) 1M x 9	(2) 1M x 9	NONE	NONE
4.5MB	(2) 1M x 9	(2) 1M x 9	(2) 256K x 9	NONE
5MB	(2) 1M x 9	(2) 1M x 9	(2) 256K x 9	(2) 256K x 9
6MB	(2) 1M x 9	(2) 1M x 9	(2) 1M x 9	NONE
8MB	(2) 1M x 9	(2) 1M x 9	(2) 1M x 9	(2) 1M x 9