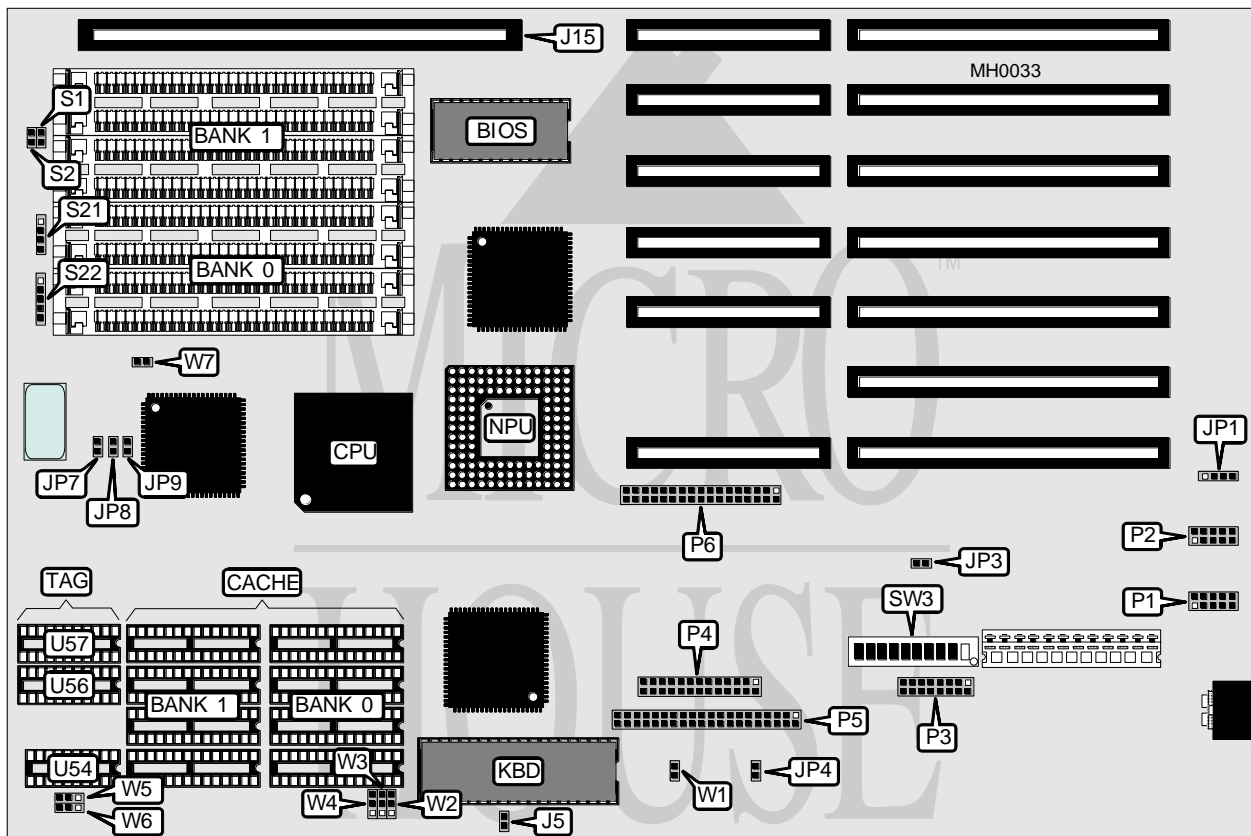


CACHE COMPUTERS, INC.

BAT 386WB (MODEL 318)

Processor	80386DX
Processor Speed	33/40MHz
Chip Set	OPTI
Max. Onboard DRAM	32MB
Cache	64/128/256KB
BIOS	AMI/Cache
Dimensions	330mm x 218mm
I/O Options	32-bit external memory card slot, IDE interface, floppy drive interface, serial ports (2), parallel port, game port
NPU Options	80387/3167



CONNECTIONS			
Purpose	Location	Purpose	Location
32-bit external memory card	J15	Parallel port	P4
External battery	JP1	IDE interface	P5
IDE LED	JP4	Floppy drive interface	P6
Turbo LED	JP7	Floppy drive interface	P6
Serial port (COM 1)	P1	Turbo switch	S1
Serial port (COM 2)	P2	Reset switch	S2
Game port	P3	Speaker	S21
		Power LED & keylock	S22

Continued on next page . . .

CACHE COMPUTERS, INC.

BAT 386WB (MODEL 318)

... continued from previous page

USER CONFIGURABLE SETTINGS		
Function	Jumper/Switch	Position
í Parallel interface enabled	J5	pins 1 & 2 closed
Parallel interface disabled	J5	pins 3 & 4 closed
í CMOS memory normal operation	JP3	Open
CMOS memory clear	JP3	Closed
í Factory configured - do not alter	JP8	N/A
í Factory configured - do not alter	JP9	N/A
í Monitor type select color	W1	Open
Monitor type select monochrome	W1	Closed
í Factory configured - do not alter	W2	N/A
í Bus speed select ATCLK/6	W7	Open
Bus speed select ATCLK/8	W7	Closed
í IDE interface enabled	SW3/1	Off
IDE interface disabled	SW3/1	On
í Floppy interface enabled	SW3/2	Off
Floppy interface disabled	SW3/2	On
í Factory configured - do not alter.	SW3/3	N/A
í Floppy interface select onboard	SW3/9	On
Floppy interface select external	SW3/9	Off
í Drive interface select automatically configured	SW3/10	Off
Drive interface select hardware configured	SW3/10	On
Note: SW3 switch settings are only necessary when using the AMI BIOS. When using the BAT 386 BIOS, all SW3 switches should be set to open.		

DRAM CONFIGURATION				
Size	Bank 0	Bank 1	Bank 2	Bank 3
1MB	(4) 256K x 9	NONE	NONE	NONE
2MB	(4) 256K x 9	(4) 256K x 9	NONE	NONE
3MB	(4) 256K x 9	(4) 256K x 9	(4) 256K x 9	NONE
4MB	(4) 256K x 9	(4) 256K x 9	(4) 256K x 9	(4) 256K x 9
4MB	(4) 1M x 9	NONE	NONE	NONE
5MB	(4) 1M x 9	(4) 256K x 9	NONE	NONE
6MB	(4) 256K x 9	(4) 256K x 9	(4) 1M x 9	NONE
7MB	(4) 256K x 9	(4) 256K x 9	(4) 256K x 9	(4) 1M x 9
8MB	(4) 1M x 9	(4) 1M x 9	NONE	NONE
9MB	(4) 1M x 9	(4) 1M x 9	(4) 256K x 9	NONE
10MB	(4) 1M x 9	(4) 1M x 9	(4) 256K x 9	(4) 256K x 9
12MB	(4) 1M x 9	(4) 1M x 9	(4) 1M x 9	NONE
13MB	(4) 1M x 9	(4) 1M x 9	(4) 1M x 9	(4) 256K x 9
16MB	(4) 1M x 9	(4) 1M x 9	(4) 1M x 9	(4) 1M x 9
16MB	(4) 4M x 9	NONE	NONE	NONE
17MB	(4) 4M x 9	(4) 256K x 9	NONE	NONE
18MB	(4) 256K x 9	(4) 256K x 9	(4) 4M x 9	NONE
19MB	(4) 256K x 9	(4) 256K x 9	(4) 256K x 9	(4) 4M x 9

Continued on next page . . .

CACHE COMPUTERS, INC.

BAT 386WB (MODEL 318)

... continued from previous page

DRAM CONFIGURATION (CON'T)

Size	Bank 0	Bank 1	Bank 2	Bank 3
20MB	(4) 4M x 9	(4) 1M x 9	NONE	NONE
21MB	(4) 4M x 9	(4) 1M x 9	(4) 256K x 9	NONE
22MB	(4) 4M x 9	(4) 1M x 9	(4) 256K x 9	(4) 256K x 9
24MB	(4) 1M x 9	(4) 1M x 9	(4) 4M x 9	NONE
25MB	(4) 1M x 9	(4) 1M x 9	(4) 256K x 9	(4) 4M x 9
28MB	(4) 1M x 9	(4) 1M x 9	(4) 1M x 9	(4) 4M x 9
32MB	(4) 4M x 9	(4) 4M x 9	NONE	NONE
33MB	(4) 4M x 9	(4) 4M x 9	(4) 256K x 9	NONE
34MB	(4) 4M x 9	(4) 4M x 9	(4) 256K x 9	(4) 256K x 9
36MB	(4) 4M x 9	(4) 4M x 9	(4) 1M x 9	NONE
37MB	(4) 4M x 9	(4) 4M x 9	(4) 1M x 9	(4) 256K x 9
40MB	(4) 4M x 9	(4) 4M x 9	(4) 1M x 9	(4) 1M x 9
48MB	(4) 4M x 9	(4) 4M x 9	(4) 4M x 9	NONE
49MB	(4) 4M x 9	(4) 4M x 9	(4) 4M x 9	(4) 256K x 9
52MB	(4) 4M x 9	(4) 4M x 9	(4) 4M x 9	(4) 1M x 9
64MB	(4) 4M x 9	(4) 4M x 9	(4) 4M x 9	(4) 4M x 9

Note: Banks 2 & 3 are used when a 32-bit external memory card is installed at J15.

CACHE CONFIGURATION

Size	Bank 0	Bank 1	TAG (U54)	TAG (U56 & 57)
64KB	(4) 8K x 8	(4) 8K x 8	(1) 16K x 1	(2) 16K x 4
128KB	(4) 32K x 8	NONE	(1) 16K x 1	(2) 16K x 4
256KB	(4) 32K x 8	(4) 32K x 8	(1) 16K x 1	(2) 16K x 4

CACHE JUMPER CONFIGURATION

Size	W3	W4	W5	W6
64KB	pins 1 & 2 closed	pins 1 & 2 closed	pins 1 & 2 closed	pins 1 & 2 closed
128KB	pins 2 & 3 closed	pins 2 & 3 closed	pins 1 & 2 closed	pins 1 & 2 closed
256KB	pins 2 & 3 closed	pins 2 & 3 closed	pins 2 & 3 closed	pins 2 & 3 closed

PARALLEL PORT CONFIGURATION

Setting	SW3/7	SW3/8
LPT1	Off	On
LPT2	Off	Off
LPT3	On	Off
Disabled	On	On

SERIAL PORT CONFIGURATION

P1	P2	SW3/4	SW3/5	SW3/6
COM 1	COM 2	Off	Off	Off
Disabled	COM 2	Off	Off	On
Disabled	Disabled	Off	On	On
COM 2	COM 1	On	Off	Off
Disabled	COM 1	On	Off	On
COM 2	Disabled	On	On	Off
Disabled	Disabled	On	On	On

