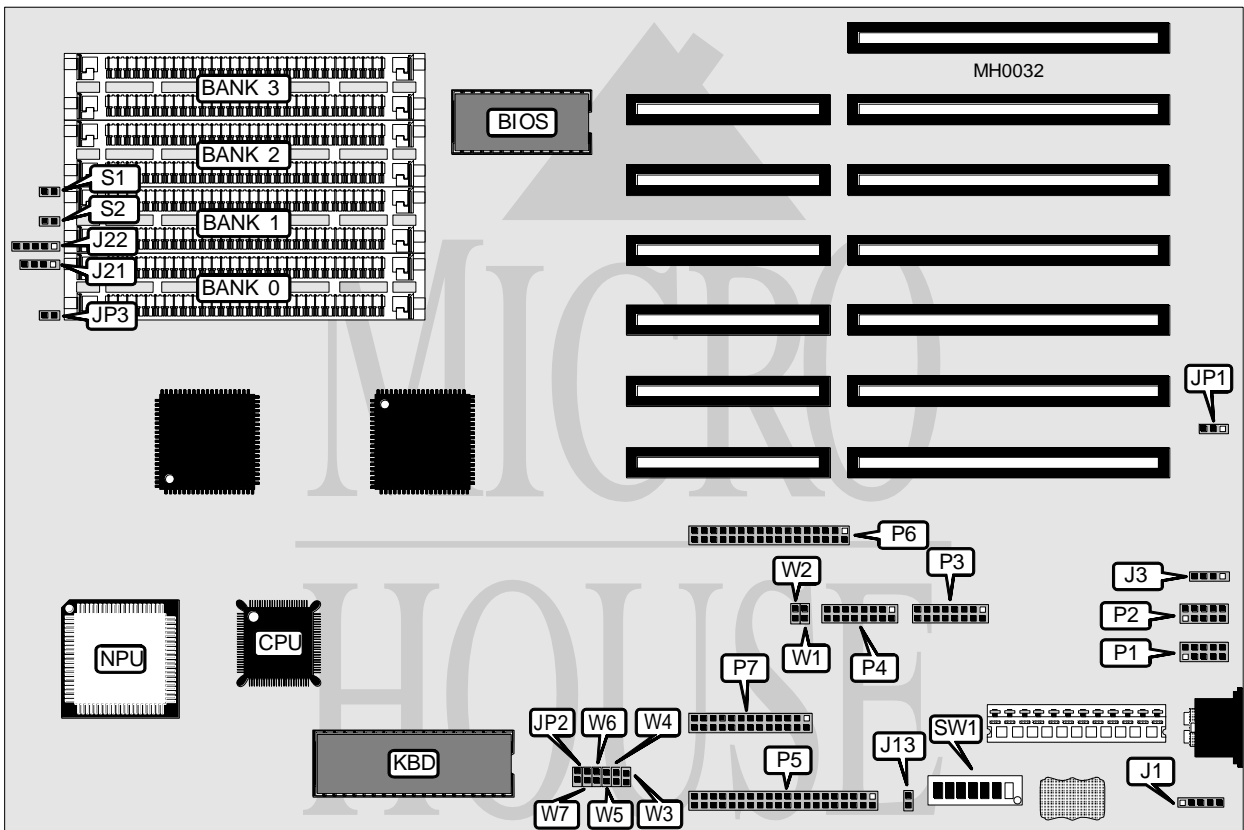


CACHE COMPUTERS, INC. 386SX-25 (MODEL 316)

Processor	80386SX
Processor speed	20/25MHz
Chip Set	OPTI
Max. Onboard DRAM	16MB
Cache	None
BIOS	AMI/Cache
Dimensions	330.2mm x 218.4mm
I/O Options	Bus mouse port, game port, serial ports (2), parallel port, floppy drive interface, IDE interface
NPU options	80387SX



CONNECTIONS			
Purpose	Location	Purpose	Location
Auxiliary keyboard	J1	Game port	P3
External battery	J3	Bus mouse port	P4
IDE interface LED	J13	IDE interface	P5
Speaker	J21	Floppy drive interface	P6
Power LED & keylock	J22	Parallel port	P7
Turbo LED	JP3	Reset switch	S1
Serial port 0	P1	Turbo switch	S2
Serial port 1	P2		

Continued on next page . . .

CACHE COMPUTERS, INC.

386SX-25 (MODEL 316)

... continued from previous page

USER CONFIGURABLE SETTINGS		
Function	Jumper/Switch	Position
í CMOS memory normal operation (internal battery)	JP1	pins 2 & 3 closed
CMOS memory normal operation (external battery)	JP1	Open
CMOS memory clear	JP1	pins 1 & 2 closed
í Monitor type select color (AMI BIOS)	JP2	Closed
Monitor type select monochrome (AMI BIOS)	JP2	Open
í Password enabled (Cache BIOS)	JP2	Closed
Password disabled (Cache BIOS)	JP2	Open
í Floppy drive interface-(P6) enabled	SW1/1	Off
Floppy drive interface-(P6) disabled	SW1/1	On
í IDE interface-(P5) enabled	SW1/2	Off
IDE interface (P5) disabled	SW1/2	On
í Serial port 0 (P1) enabled	SW1/3	Off
Serial port 0 (P1) disabled	SW1/3	On
í Serial port 1 (P2) enabled	SW1/4	Off
Serial port 1 (P2) disabled	SW1/4	On
í Game port (P3) enabled	SW1/5	Off
Game port (P3) disabled	SW1/5	On
í Parallel port (P7) enabled	SW1/6	Off
Parallel port (P7) disabled	SW1/6	On
í Bus mouse port (P4) enabled	SW1/7	Off
Bus mouse port (P4) disabled	SW1/7	On
í Floppy drive interface (P6) address select 1F0-1F7	W3	Open
Floppy drive interface (P6) address select 170-177	W3	Closed
í IDE address select 3F1-3F7	W4	Open
IDE address select 371-377	W4	Closed
í Serial port 0 (P1) address select 3F8-3FF	W5	Open
Serial port 0 (P1) address select 3E8-3EF	W5	Closed
í Serial port 1 (P2) address select 2F8-2FF	W6	Open
Serial port 1 (P2) address select 2E8-2EF	W6	Closed
í Parallel port (P7) address select 378-37F	W7	Open
Parallel port (P7) address select 278-27F	W7	Closed

Continued on next page...

CACHE COMPUTERS, INC.
386SX-25 (MODEL 316)

... continued from previous page

DRAM CONFIGURATION				
Size	Bank 0	Bank 1	Bank 2	Bank 3
1MB	(2) 256K x 9	(2) 256K x 9	NONE	NONE
2MB	(2) 256K x 9	(2) 256K x 9	(2) 256K x 9	(2) 256K x 9
2MB	(2) 1M x 9	NONE	NONE	NONE
3MB	(2) 256K x 9	(2) 256K x 9	(2) 1M x 9	NONE
4MB	(2) 1M x 9	(2) 1M x 9	NONE	NONE
5MB	(2) 256K x 9	(2) 256K x 9	(2) 1M x 9	(2) 1M x 9
6MB	(2) 1M x 9	(2) 1M x 9	(2) 1M x 9	NONE
8MB	(2) 1M x 9	(2) 1M x 9	(2) 1M x 9	(2) 1M x 9
9MB	(2) 256K x 9	(2) 256K x 9	(2) 4M x 9	NONE
10MB	(2) 1M x 9	(2) 4M x 9	NONE	NONE
12MB	(2) 1M x 9	(2) 1M x 9	(2) 4M x 9	NONE
16MB	(2) 4M x 9	(2) 4M x 9	NONE	NONE

BUS MOUSE INTERRUPT CONFIGURATION		
IRQ	W1	W2
IRQ5	Open	Closed
IRQ2	Closed	Open
None	Open	Open