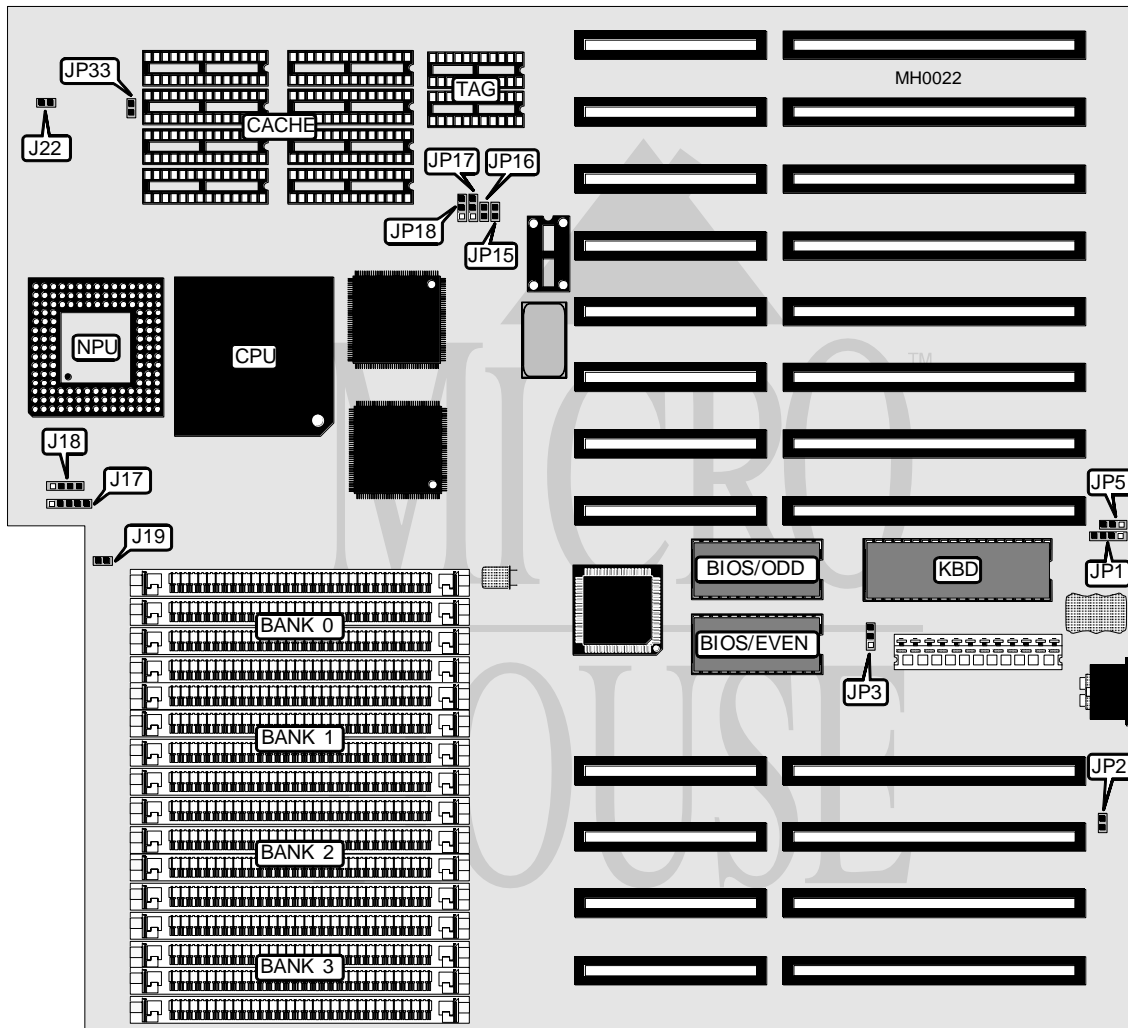


**SOYO COMPUTER CO., LTD.**  
**SY-020A/B**

<b>Processor</b>	80486DX
<b>Processor Speed</b>	25/33MHz
<b>Chip Set</b>	ETEQ
<b>Max. Onboard DRAM</b>	64MB
<b>Cache</b>	64/256KB
<b>BIOS</b>	AMI
<b>Dimensions</b>	314mm x 288mm
<b>I/O Options</b>	None
<b>NPU Options</b>	4167



CONNECTIONS			
Purpose	Location	Purpose	Location
Power LED & keylock	J17	Turbo LED	J22
Speaker	J18	External battery	JP1
Reset switch	J19		

Continued on next page . . .

# SOYO COMPUTER CO., LTD.

## SY-020A/B

... continued from previous page

### USER CONFIGURABLE SETTINGS

Function	Jumper	Position
í Factory configured - do not alter	JP2	Closed
í Monitor type select monochrome	JP3	pins 2 & 3 closed
Monitor type select color	JP3	pins 1 & 2 closed
í CMOS memory normal operation	JP5	pins 1 & 2 closed
CMOS memory clear	JP5	pins 2 & 3 closed

### DRAM CONFIGURATION

Size	Bank 0	Bank 1	Bank 2	Bank 3
1MB	(4) 256K x 9	NONE	NONE	NONE
2MB	(4) 256K x 9	(4) 256K x 9	NONE	NONE
3MB	(4) 256K x 9	(4) 256K x 9	(4) 256K x 9	NONE
4MB	(4) 256K x 9	(4) 256K x 9	(4) 256K x 9	(4) 256K x 9
5MB	(4) 1M x 9	(4) 256K x 9	NONE	NONE
6MB	(4) 256K x 9	(4) 256K x 9	(4) 1M x 9	NONE
7MB	(4) 256K x 9	(4) 256K x 9	(4) 256K x 9	(4) 1M x 9
8MB	(4) 1M x 9	(4) 1M x 9	NONE	NONE
9MB	(4) 256K x 9	(4) 1M x 9	(4) 1M x 9	NONE
10MB	(4) 256K x 9	(4) 256K x 9	(4) 1M x 9	(4) 1M x 9
12MB	(4) 1M x 9	(4) 1M x 9	(4) 1M x 9	NONE
13MB	(4) 256K x 9	(4) 1M x 9	(4) 1M x 9	(4) 1M x 9
16MB	(4) 1M x 9	(4) 1M x 9	(4) 1M x 9	(4) 1M x 9
16MB	(4) 4M x 9	NONE	NONE	NONE
20MB	(4) 1M x 9	(4) 4M x 9	NONE	NONE
24MB	(4) 1M x 9	(4) 1M x 9	(4) 4M x 9	NONE
28MB	(4) 1M x 9	(4) 1M x 9	(4) 1M x 9	(4) 4M x 9
32MB	(4) 4M x 9	(4) 4M x 9	NONE	NONE
36MB	(4) 1M x 9	(4) 4M x 9	(4) 4M x 9	NONE
40MB	(4) 1M x 9	(4) 1M x 9	(4) 4M x 9	(4) 4M x 9
48MB	(4) 4M x 9	(4) 4M x 9	(4) 4M x 9	NONE
52MB	(4) 1M x 9	(4) 4M x 9	(4) 4M x 9	(4) 4M x 9
64MB	(4) 4M x 9	(4) 4M x 9	(4) 4M x 9	(4) 4M x 9

### CACHE CONFIGURATION

Size	Bank 0	Tag
64KB	(8) 8K x 8	(2) 4K x 4
256KB	(8) 32K x 8	(2) 16K x 4

### CACHE JUMPER CONFIGURATION

Size	JP15	JP16	JP17	JP18	JP33
64KB	Open	Open	2 & 3	2 & 3	Open
256KB	Closed	Closed	1 & 2	1 & 2	Closed

Note: Pins designated should be in the closed position.