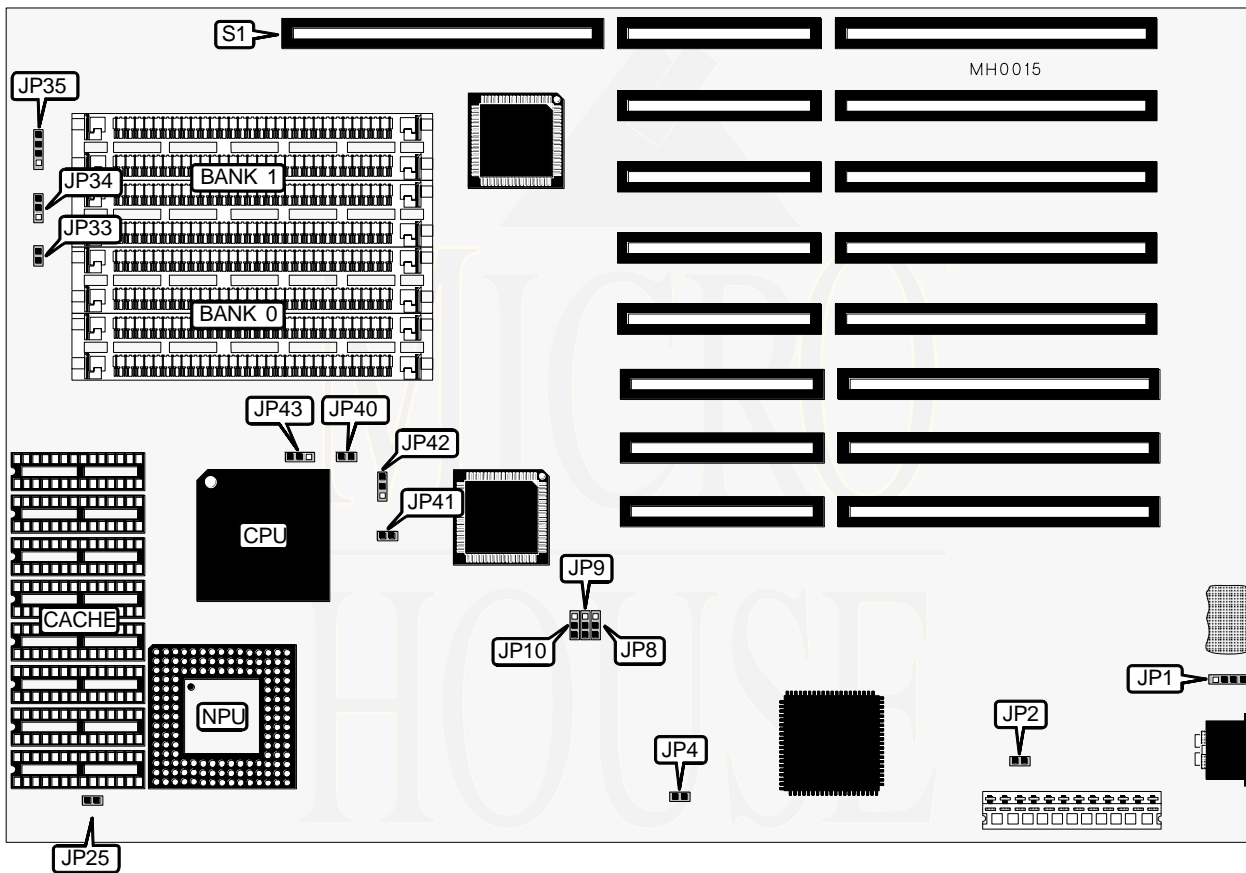


# UNIDENTIFIED

## ETE Q 486 DX/SX

**Processor** 80486SX/80487SX/80486DX  
**Processor Speed** 20/25/33MHz  
**Chip Set** ETEQ  
**Max. Onboard DRAM** 32MB  
**Cache** 64/256KB  
**BIOS** AMI/MR  
**Dimensions** 330.2mm x 218.4mm  
**I/O Options** 32-bit external memory card slot  
**NPU Options** 4167



CONNECTIONS			
Purpose	Location	Purpose	Location
External battery	JP1	Power LED & keylock	JP35
Reset switch	JP33	32-bit external memory card	S1
Speaker	JP34		

Continued on next page . . .

# UNIDENTIFIED

## ETE Q 486 DX/SX

... continued from previous page

USER CONFIGURABLE SETTINGS		
Function	Jumper	Position
í Battery select internal	JP1	pins 2 & 3 closed
Battery select external	JP1	pins 1 & 4 connected
í Monitor type select color	JP2	Closed
Monitor type select monochrome	JP2	Open

DRAM CONFIGURATION		
Size	Bank 0	Bank 1
1MB	(4) 256K x 9	NONE
2MB	(4) 256K x 9	(4) 256K x 9
4MB	(4) 1M x 9	NONE
5MB	(4) 1M x 9	(4) 256K x 9
8MB	(4) 1M x 9	(4) 1M x 9
16MB	(4) 4M x 9	NONE
17MB	(4) 4M x 9	(4) 256K x 9
20MB	(4) 4M x 9	(4) 1M x 9
32MB	(4) 4M x 9	(4) 4M x 9

Note: Memory configurations are unverified.

CACHE CONFIGURATION		
Size	Max Cacheable	Bank 0
64KB	16MB	(8) 8K x 8
256KB	64MB	(8) 32K x 8

CACHE JUMPER CONFIGURATION					
Size	JP4	JP8	JP9	JP10	JP25
64KB	open	2 & 3 closed	2 & 3 closed	2 & 3 closed	open
256KB	closed	1 & 2 closed	1 & 2 closed	1 & 2 closed	closed

CPU TYPE CONFIGURATION				
Type	JP40	JP41	JP42	JP43
80486DX	Closed	Closed	pins 2 & 3 closed	pins 2 & 3 closed
80487SX	closed	Closed	pins 2 & 3 closed	pins 1 & 2 closed
80486SX	Open	Open	pins 1 & 2 closed	Open