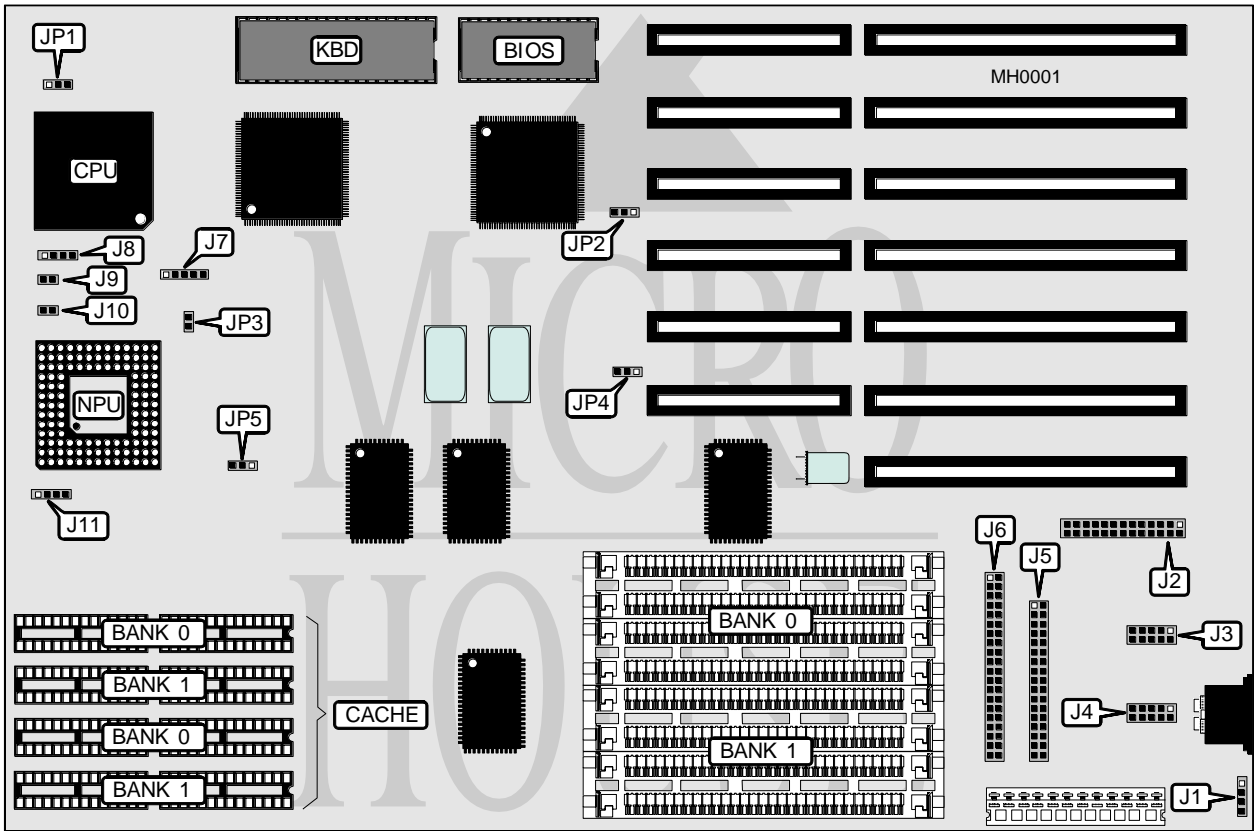


MYLEX CORPORATION

MTI 386

Processor	80386DX
Processor Speed	25/33MHz
Chip Set	TI
Max. Onboard DRAM	32MB
Cache	32/64/128KB
BIOS	Mylex
Dimensions	330.2mm x 218.4mm
I/O Options	Floppy drive interface, IDE interface, parallel port, serial ports (2)
NPU Options	80387/3167



CONNECTIONS			
Purpose	Location	Purpose	Location
External battery	J1	Power LED & keylock	J7
Parallel port	J2	Speaker	J8
Serial port (COM1)	J3	Turbo LED	J9
Serial port (COM2)	J4	Reset switch	J10
Floppy drive interface	J5	IDE interface LED	J11
IDE interface	J6		

Continued on next page . . .

MYLEX CORPORATION

MTI 386

... continued from previous page

USER CONFIGURABLE JUMPERS		
Function	Jumper	Position
í Monitor type select color	JP1	pins 1 & 2 closed
Monitor type select monochrome	JP1	pins 2 & 3 closed
í Parallel port (J2) interrupt select IRQ7	JP2	pins 1 & 2 closed
Parallel port (J2) interrupt select IRQ5	JP2	pins 2 & 3 closed
í Factory configured - do not alter	JP3	Closed
í I/O ports (J2-J6) enabled	JP4	pins 1 & 2 closed
I/O ports (J2-J6) disabled	JP4	pins 2 & 3 closed

DRAM CONFIGURATION		
Size	Bank 0	Bank 1
1MB	(4) 256K x 9	NONE
2MB	(4) 256K x 9	(4) 256K x 9
4MB	(4) 1M x 9	NONE
5MB	(4) 1M x 9	(4) 256K x 9
8MB	(4) 1M x 9	(4) 1M x 9
16MB	(4) 4M x 9	NONE
17MB	(4) 4M x 9	(4) 256K x 9
20MB	(4) 4M x 9	(4) 1M x 9
32MB	(4) 4M x 9	(4) 4M x 9

CACHE CONFIGURATION		
Size	Bank 0	Bank 1
32KB	(4) 8K x 8	NONE
64KB	(4) 8K x 8	(4) 8K x 8
128KB	(4) 32K x 8	NONE

CACHE JUMPER CONFIGURATION	
Size	JP5
32KB	pins 2 & 3 closed
64KB	pins 2 & 3 closed
128KB	pins 1 & 2 closed