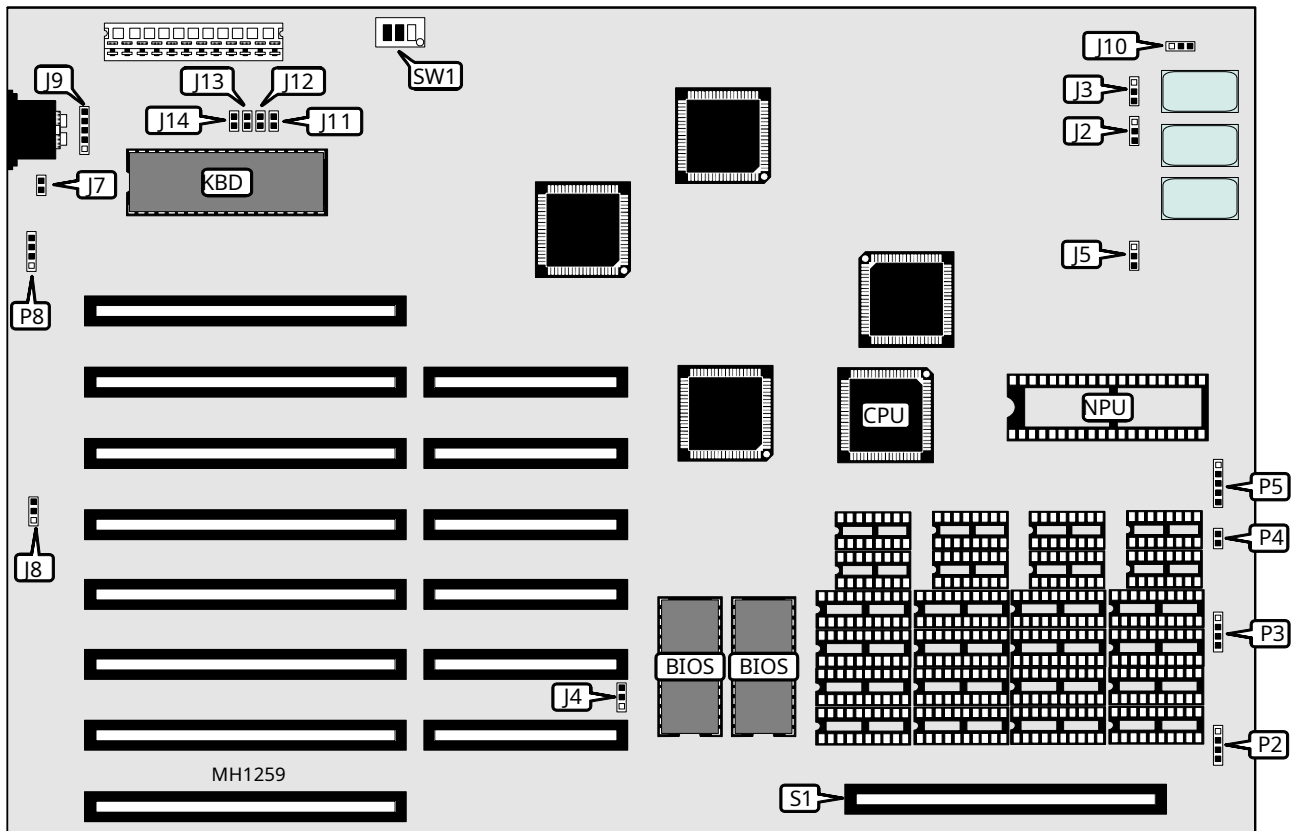


DELTA

046-3.4-0788

Processor	80286
Processor Speed	6/8/10/12/16/20MHz
Chip Set	C & T NEAT
Max. Onboard DRAM	4MB
SRAM Cache	None
BIOS	Award
Dimensions	330mm x 218mm
I/O Options	16-bit external memory card slot, auxillary keyboard connector
NPU Options	80287



CONNECTIONS			
Purpose	Location	Purpose	Location
Auxiliary keyboard	J9	Power LED & keylock	P5
Turbo LED	P2	External battery	P8
Speaker	P3	16-bit external memory card	S1
Reset switch	P4		

Continued on next page . . .

DELTA0

46-3.4-0788

... continued from previous page

USER CONFIGURABLE SETTINGS		
Function	Jumper/Switch	Position
BIOS type select 27256	J4	pins 2 & 3 closed
BIOS type select 27128	J4	pins 1 & 2 closed
í Keyboard controller clock speed select 6MHz	J5	pins 1 & 2 closed
Keyboard controller clock speed select 12MHz	J5	pins 2 & 3 closed
Battery type select Alkaline 4.5VDC	J7	closed
Battery type select Lithium 6VDC	J7	open
í Power good signal detect from power supply	J8	pins 2 & 3 closed
Power good signal detect from board	J8	pins 1 & 2 closed
Monitor type select color	SW1/Switch 3	closed
Monitor type select monochrome	SW1/Switch 3	open

CPU SPEED/BUS CLOCK CONFIGURATION						
CPU Speed	AT Bus Speed	J2	J3	J10	J13	J14
20MHz	8MHz	pins 1 & 2	pins 1 & 2	pins 2 & 3	open	open
20MHz	10MHz	N/A	pins 1 & 2	pins 2 & 3	closed	open
20MHz	12MHz	pins 2 & 3	pins 1 & 2	pins 2 & 3	open	open
16MHz	8MHz	pins 1 & 2	pins 1 & 2	pins 1 & 2	open	open
16MHz	12MHz	pins 2 & 3	pins 1 & 2	pins 1 & 2	open	open
12MHz	6MHz	N/A	pins 2 & 3	N/A	closed	open
12MHz	8MHz	pins 1 & 2	pins 2 & 3	N/A	open	open
12MHz	12MHz	pins 2 & 3	N/A	N/A	open	closed
10MHz	10MHz	N/A	pins 1 & 2	pins 2 & 3	closed	closed
8MHz	8MHz	pins 1 & 2	N/A	N/A	open	closed
6MHz	6MHz	N/A	pins 2 & 3	N/A	closed	closed

Note: Pins designated should be in the closed position.

NPU CLOCK RATE CONFIGURATION			
NPU Speed	Clock Rate	SW1/Switch 1	SW1/Switch 2
80287-8	6MHz	closed	closed
80287-8	8MHz	closed	open
80287-10	10MHz	open	closed
80287-12	12MHz	open	open

DRAM CONFIGURATION				
Size	Bank 0	Bank 1	J11	J12
512KB	(2) 256K x 9	NONE	open	open
1MB	(2) 256K x 9	(2) 256K x 9	closed	open
2MB	(2) 1M x 9	NONE	open	closed
4MB	(2) 1M x 9	(2) 1M x 9	closed	closed