

## How to use AFU408p Flash Utility?

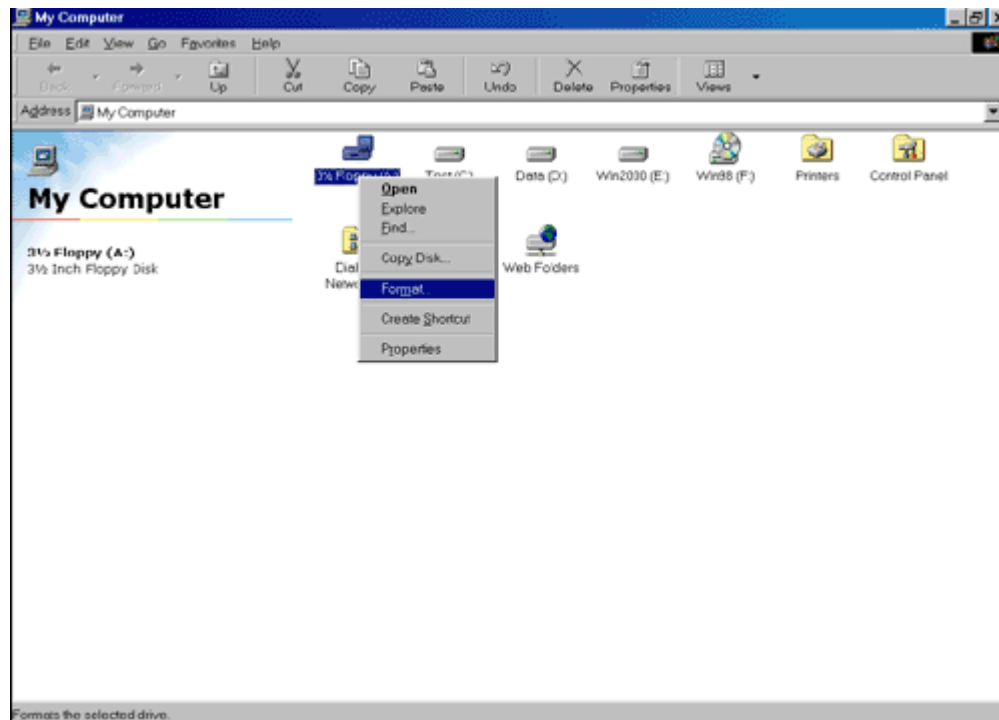
### Step 1.

(1) If your mainboard has a BIOS protection jumper, change the setting to allow BIOS flashing.

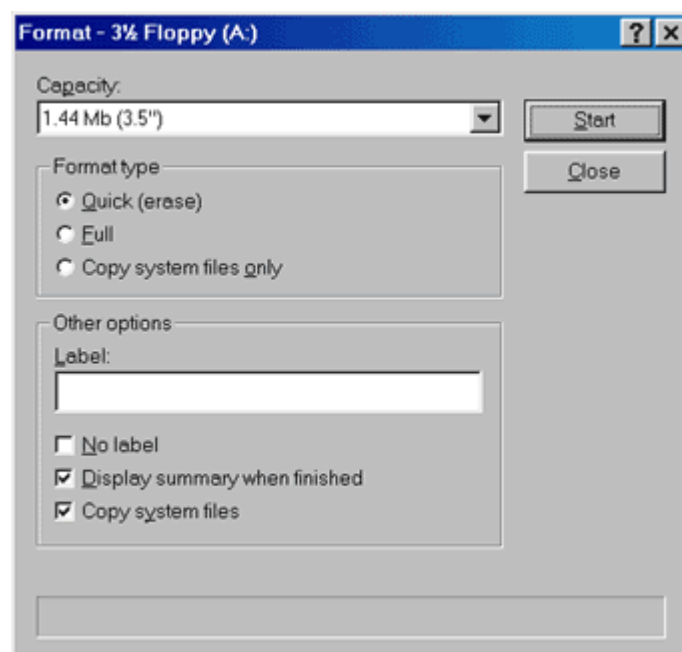
(2) Make a DOS boot diskette. (See example: Windows 98 O.S.)

— **Beware: Windows 2000/Me are not allowed to make a DOS boot diskette.**

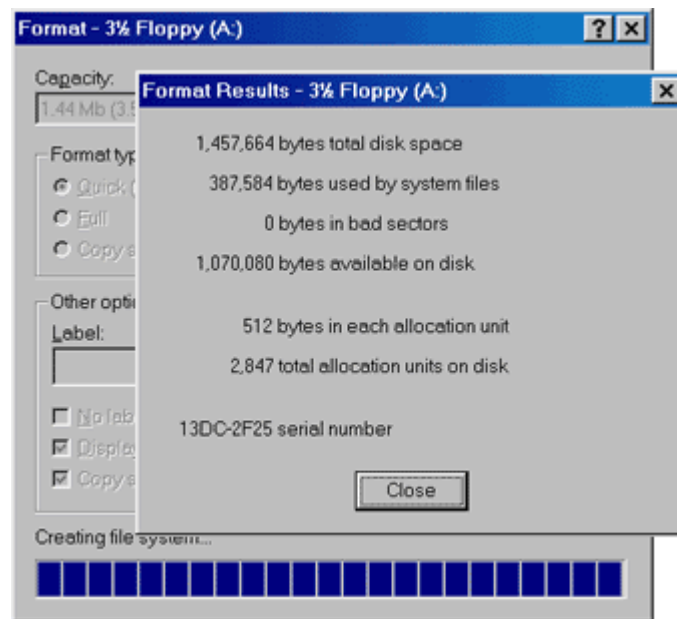
— a. With an available floppy disk in the floppy drive. Please leave the diskette "UN-write protected" type. Double click the "My Computer" icon from Desktop, then click "3.5 diskette (A)" and right click to select "Format (M)".



— b. Select the Quick (erase) for Format Type, and pick both "Display summary when finished" and "Copy system files", after that press "Start". That will format the floppy and transfer the needed system files to it.



c. After the floppy has been formatted completely, please press "Close".



## Step 2. Download BIOS and BIOS utility program

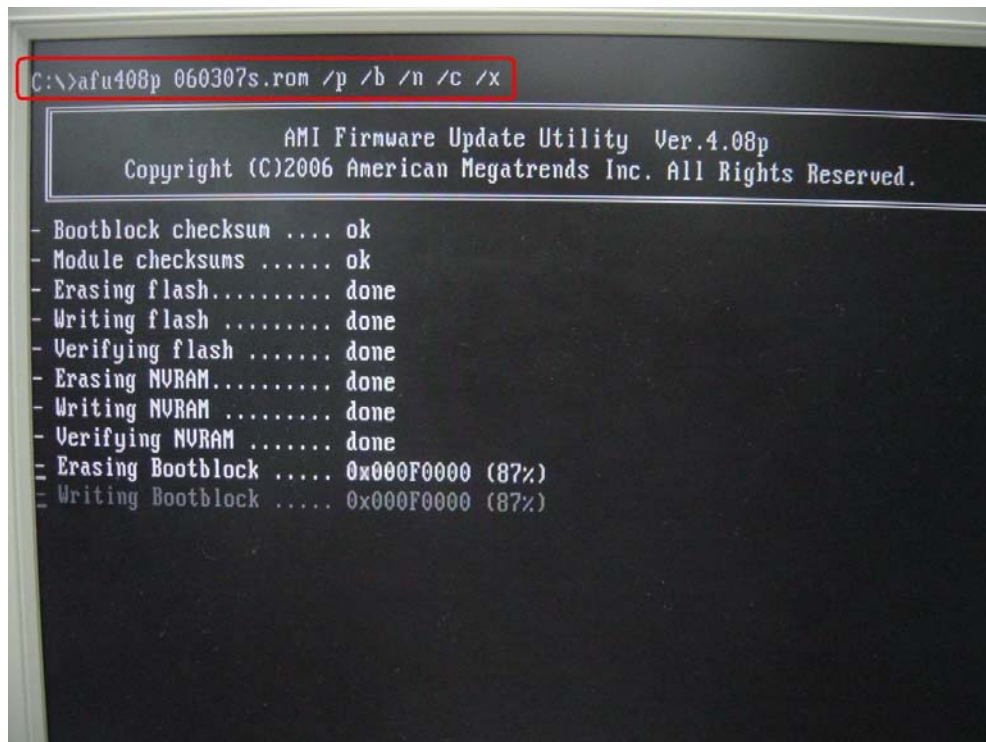
- (1) Please go to ECS website at <http://www.ecs.com.tw> and click "Download " section.
- (2) Choose an appropriate model name in accordance with user's manual or based on the motherboard revision that can be found near the AGP slot.

## Step 3.

- (1) Make sure the system will boot from the floppy disk. After the system boot from floppy disk, type "A:\> dir" and press "Enter" to check the entire files in floppy A. Then type the "BIOS flash utility" and "BIOS file" after A:\>. In this case you have to type "A:\>AFU408p 060307S.ROM /p /b /n /c /x" and then press "Enter".

060307S.ROM is your M/B BIOS ROM file name.

- (2) The utility will flash your BIOS take around 1 minute to finish it. Please restart your system after the BIOS flash completely as below screen.



- Beware: Please do not turn off the system while you are upgrading BIOS. It will render your BIOS corrupted and system totally inoperative.

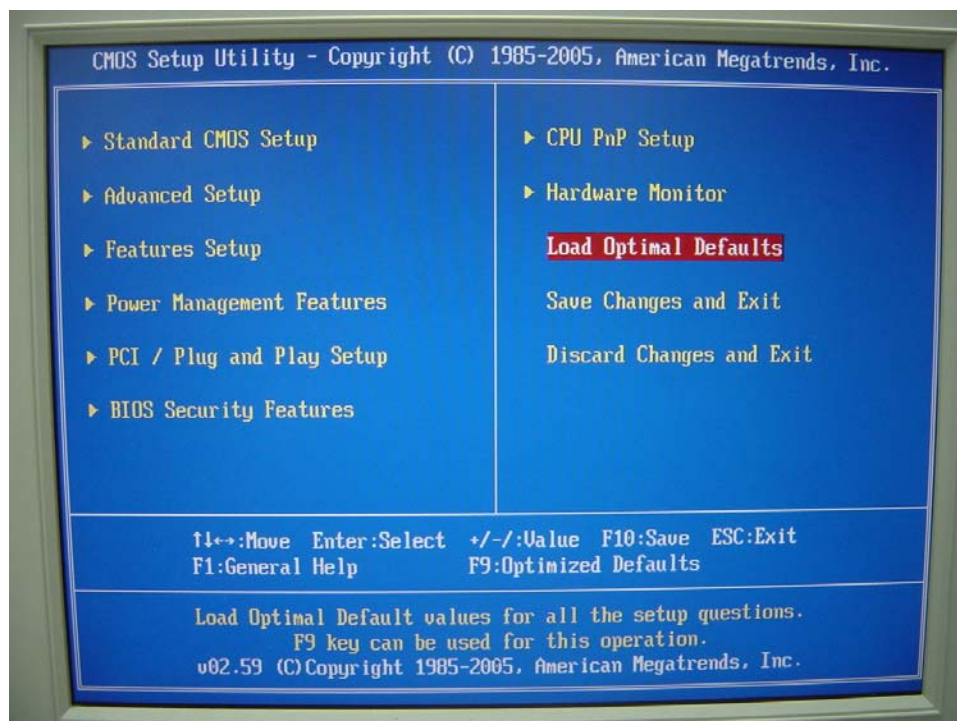
(3) When the BIOS flash completed. It will auto restart the system.

#### Step 4. Load BIOS defaults

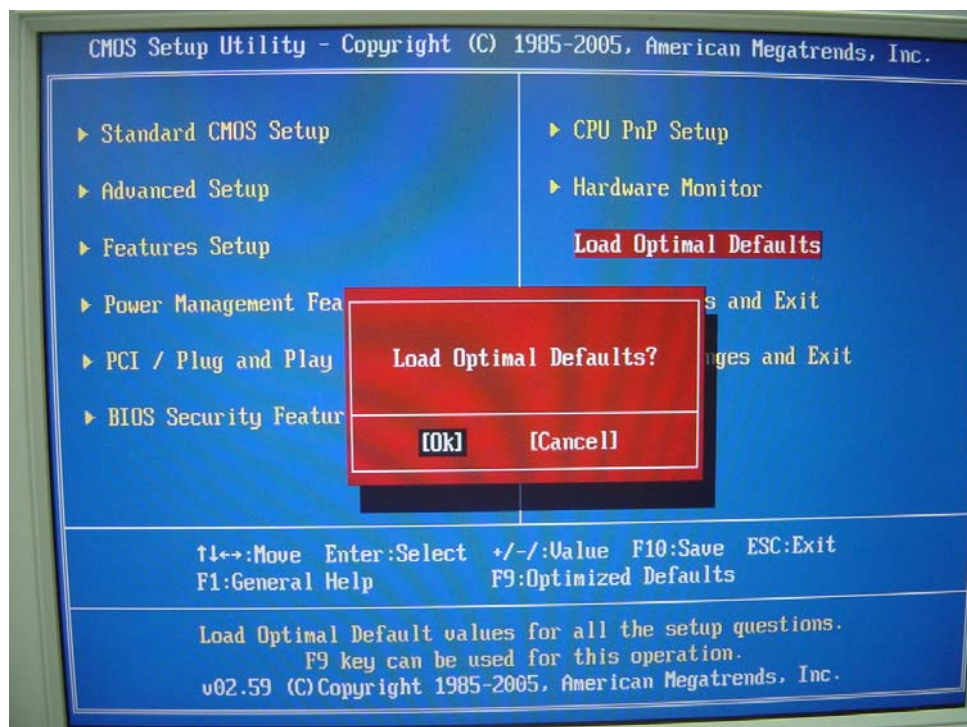
- (1) Normally the system redetects all devices after BIOS has been upgraded. Therefore, we highly recommend reloading the BIOS defaults after BIOS has been upgraded. This important step resets everything after the flash.
- (2) The boot up screen will indicate your motherboard model and current BIOS version.



(3) Press [F1] key to enter BIOS setup when system is boot up. Use the arrows to highlight the item "LOAD OPTIMAL SETTINGS" then press "Enter". System will ask "Load Optimal Defaults ([Ok] / [Cancel])?" Press "[Ok]" to confirm.







Then press [F10] key to save & exit setup and press [Ok] to confirm.

