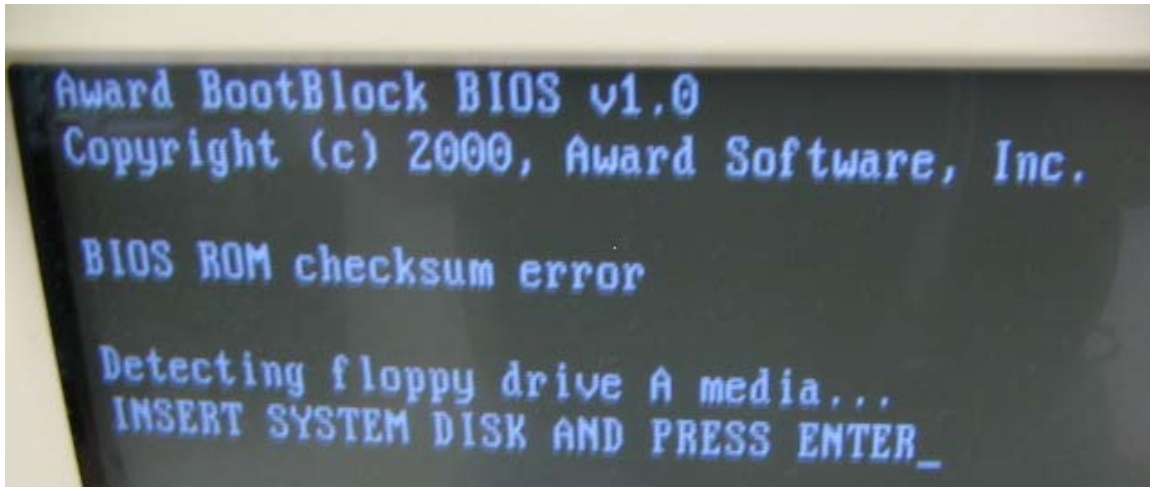


Thank you for purchasing our NF4UK8AA-8EKRS motherboard.

Warning, if you receive this message when you turn on the system:

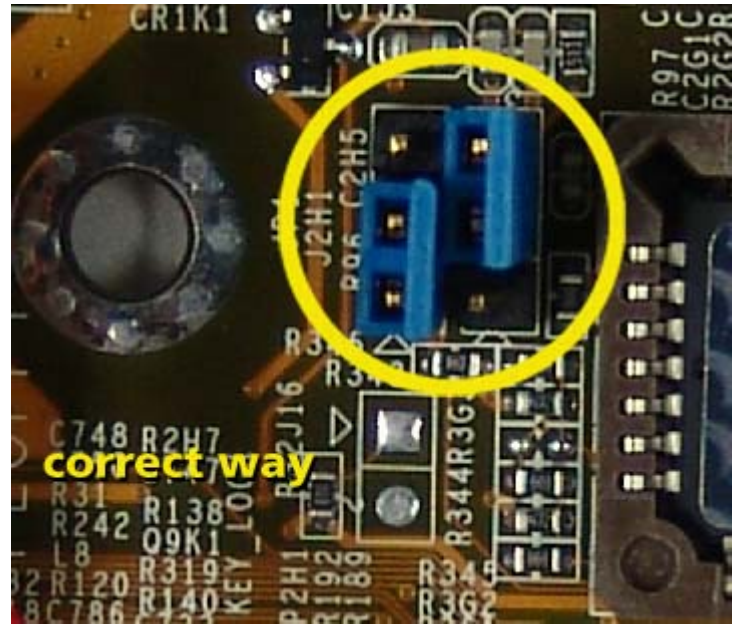


DO NOT CLEAR THE CMOS- Doing so will result in not being able to recover from this.

Follow steps outlined below:

To flash the motherboard BIOS on this motherboard, please follow this procedure:

1. Unplug the power cord from the power supply.
2. Remove the side cover from the system enclosure.
3. Locate Jumper "JP1" on the motherboard. Please refer to the picture below:



4. Jumper "JP1" needs to be changed from 2-3 to **1-2** (triangle represents pin 1) **before** you flash the motherboard. **Not doing so could result in leaving your motherboard in an unusable state.**
5. Follow the instructions provide in the "How to Flash your BIOS in DOS" pdf document.
6. Replace the side cover.
7. Reconnect the power cord.

Note: This procedure is required EVERY time you flash the motherboard BIOS or use change the logo.

BIOS Recovery:

Follow Steps 1 – 7 above and flash the BIOS via: DOS with these command parameters:
AFU860H x.bin /py/sn/cc/cd/cp/wb.

Note: x represents the BIOS file name, included in this zip file

Refer to How to Flash your BIOS in Dos for creating a bootable disk.

Flash Procedure:

In order to extract the BIOS from within the provided zip file, you will need to enter "**Fullerton**" (without the quotation marks) as the password.

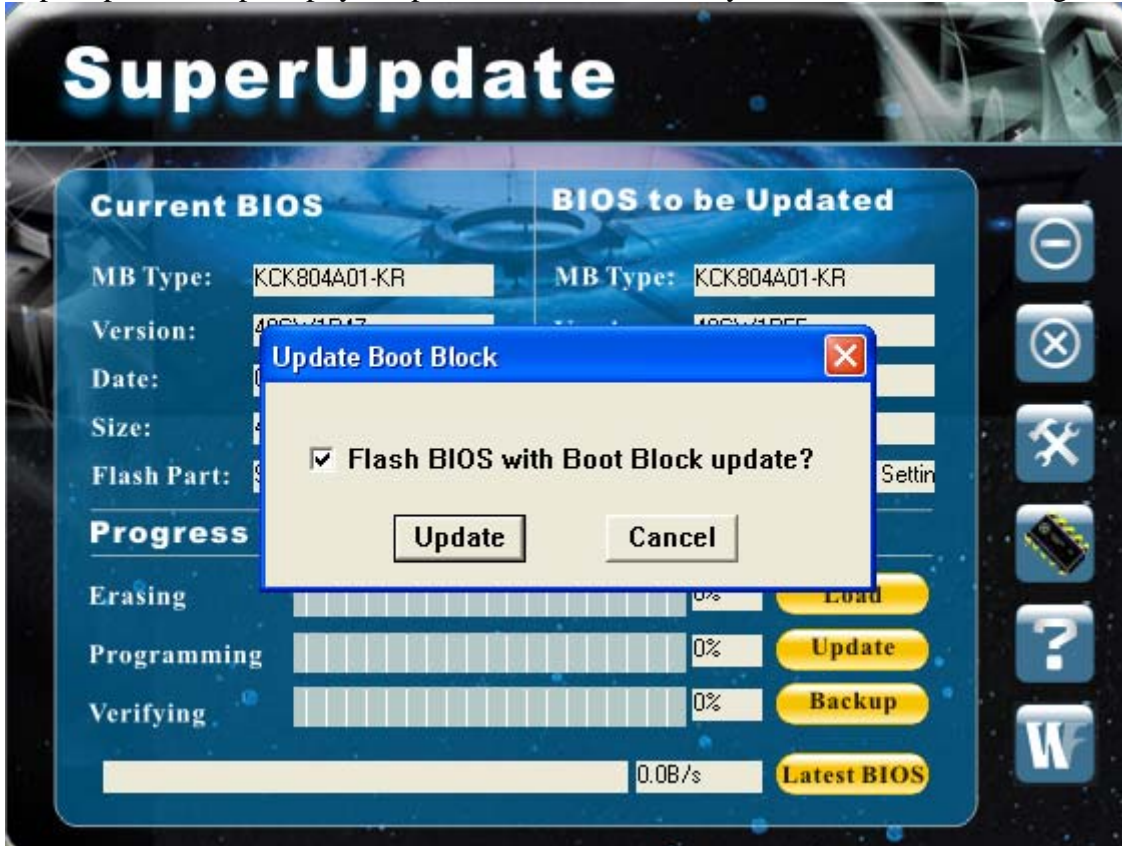
With the new BIOS you can either flash it from DOS¹ or SuperUpdate¹, SuperLogo¹.

When flashing from DOS, use the FLASH.BAT or type these command line parameters:
AFU860H x.bin /py/sy/cc/cd/cp/wb

Note: x represents the BIOS file name, included in this zip file.

Before using SuperUpdate or SuperLogo verify that jumper JP1 is on 1-2, not doing so will leave your motherboard in an useable state.

SuperUpdate will prompt you update the Boot Block, if you do not see this message then JP1 is on 2-3.



Leave jumper JP1 on 1-2 (DISABLED), after flashing the BIOS or changing the logo, not doing so, will result in Windows unable to boot up.