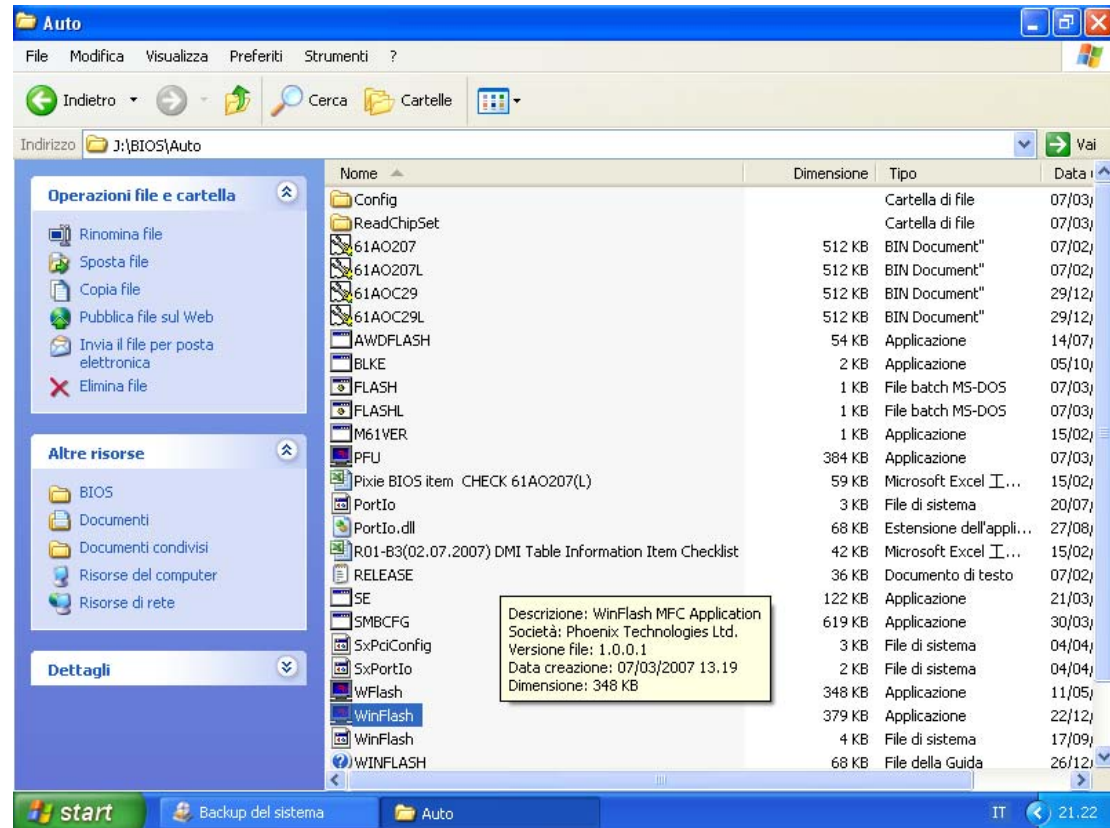


Pixie Project BIOS Flash SOP in Windows :

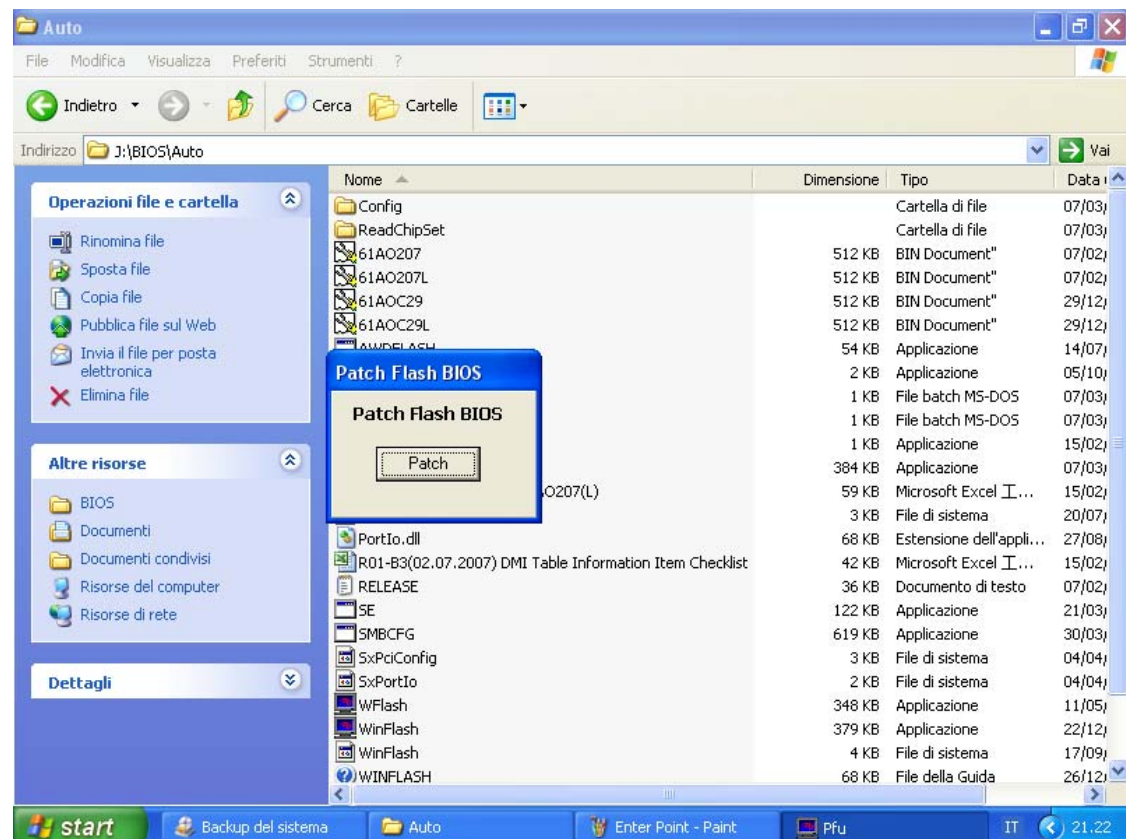
Step 1 :

Get the BIOS Package and put in a single folder.



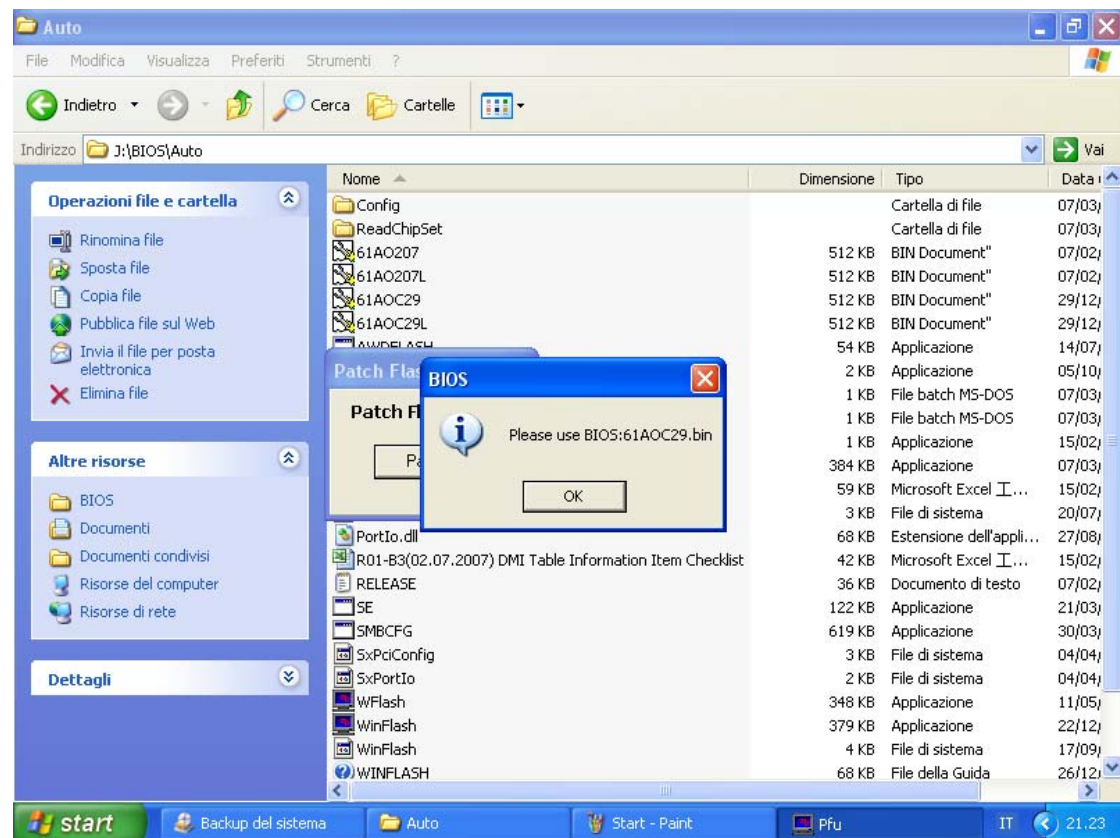
Step 2:

Click WinFlash.exe in the folder, a "Patch Flash BIOS" prompt show up, please click "Patch" Button.



Step 3:

Flash Utility will detect MB chipset version and show up which BIN file should user flash, click "OK" for next step.



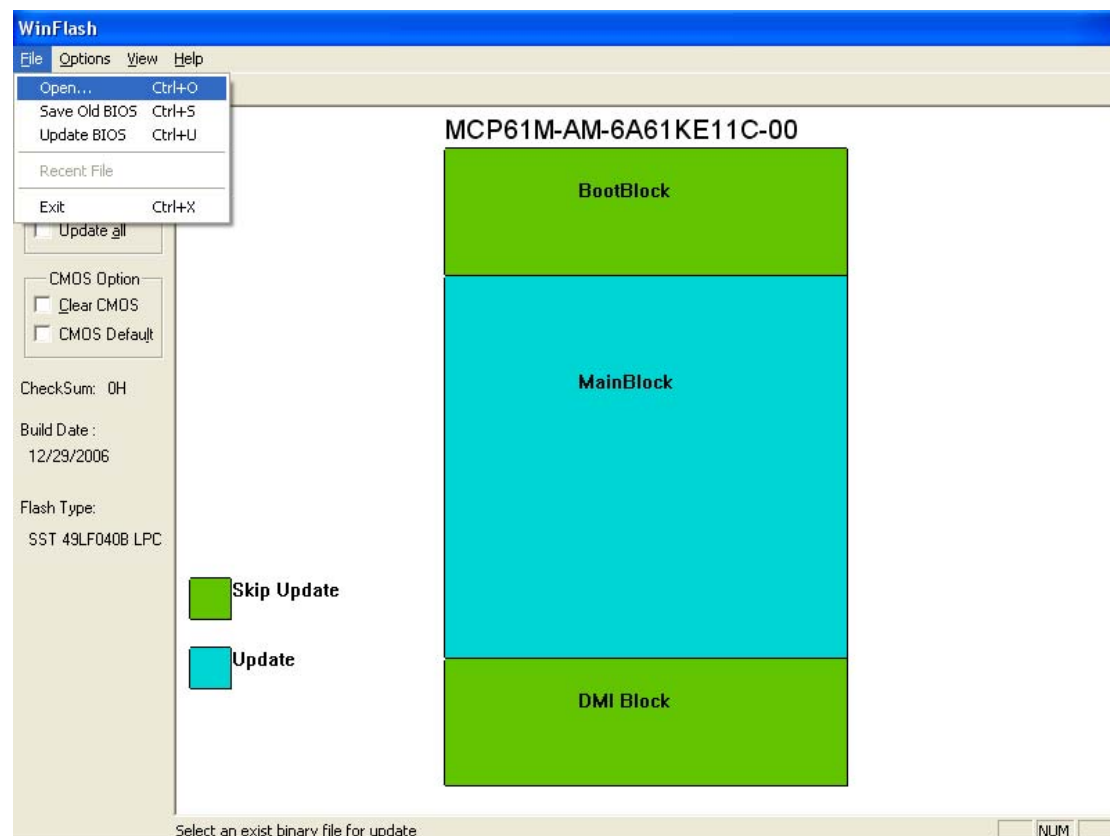
Step 4 :

WinFlash main application will be launched automatically.



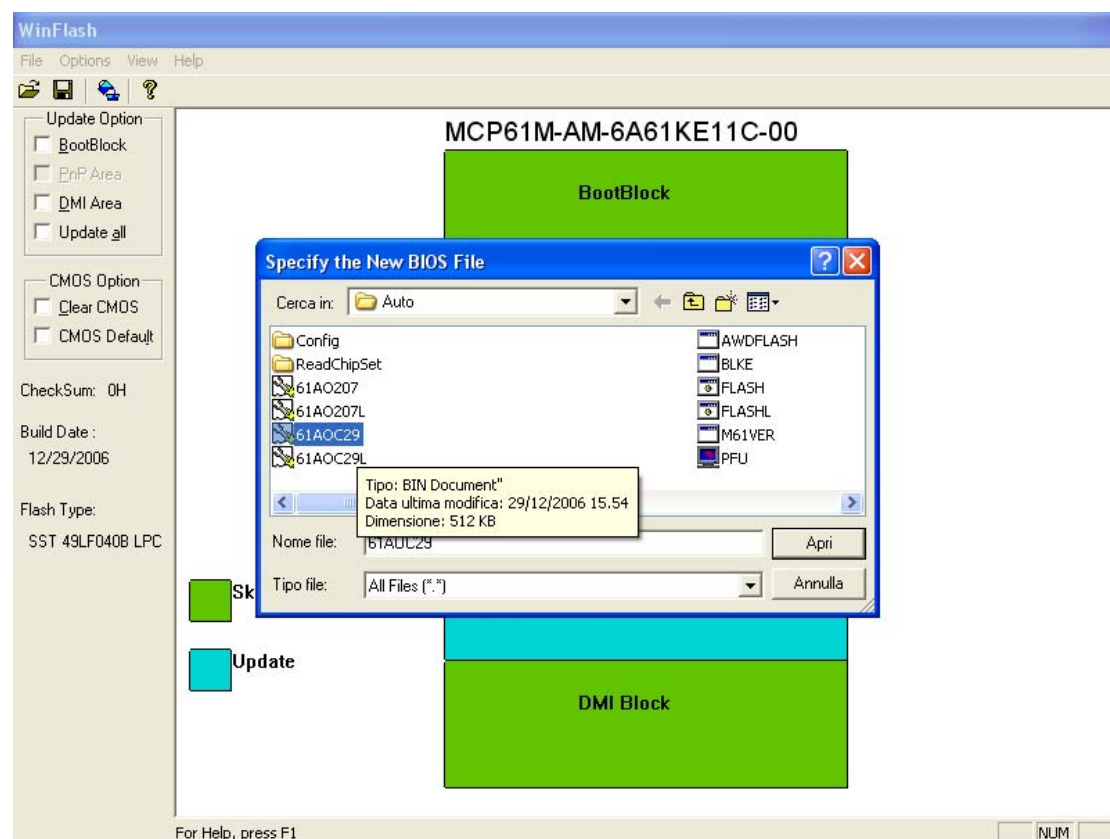
Step 5 :

Follow normal Flash BIOS process, click “File” -> “Open”



Step 6 :

Select the BIN file which utility prompt in step 3. After that process will be the same as usual.



P.S BIOS flashing in DOS , just need to key in “FLASH.BAT”, which is same as usual.