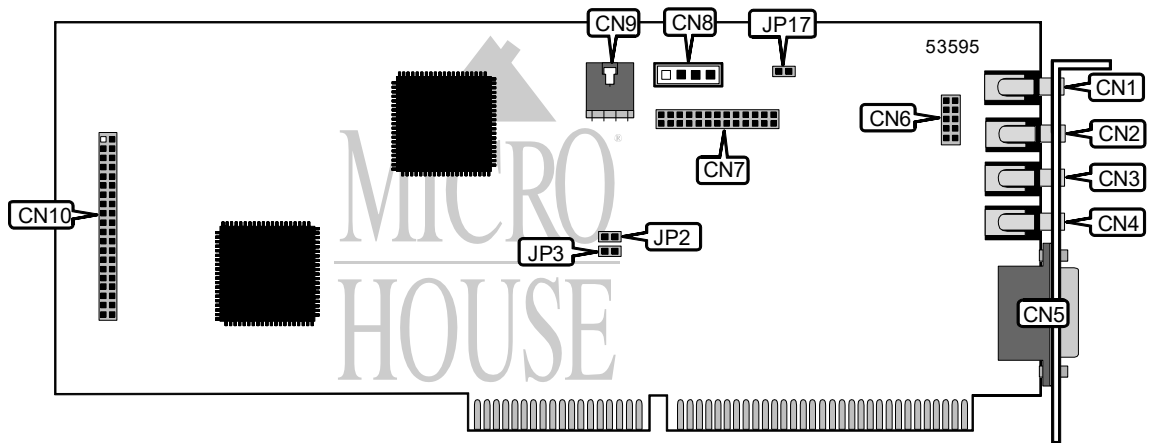


CREATIVE LABS, INC. SOUNDBLASTER 16 VALUE (CT2950, CT2959, CT2980)

Card Type	Sound card
Chip Set	Creative Technology
Maximum Onboard Memory	None
I/O Options	Line in connector, microphone in connector, line out connector, speaker out connector, game/MIDI port, CD-ROM audio in connectors (2), CD-ROM interface, PC internal speaker, feature connector
Data Bus	16-bit ISA



CONNECTIONS			
Function	Label	Function	Label
Line in connector	CN1	Feature connector	CN7
Microphone connector	CN2	CD-ROM audio in connector	CN8
Line out connector	CN3	CD-ROM audio in connector	CN9
Speaker out connector	CN4	CD-ROM interface	CN10
Game/MIDI port	CN5	PC internal speaker	JP17

USER CONFIGURABLE SETTINGS			
Function	Label	Position	
í Factory configured – do not alter	CN6	Unidentified	

Continued on next page . . .

CREATIVE LABS, INC.
SOUNDBLASTER 16 VALUE
(CT2950, CT2959, CT2980)

. . . continued from previous page

CSP CHIP SELECTION		
Setting	JP2	JP3
Enabled	Open	Open
Disabled	Closed	Closed