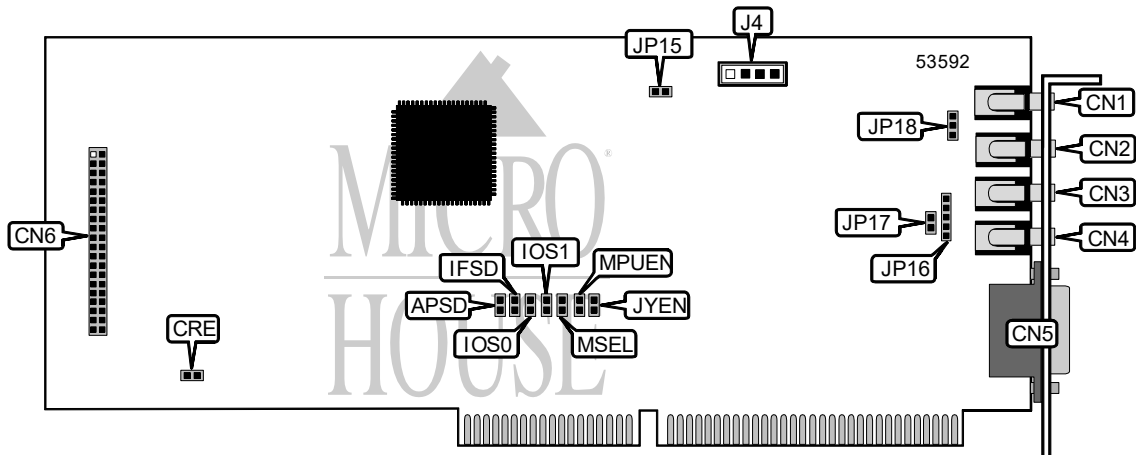


CREATIVE LABS, INC. SOUNDBLASTER VALUE 16 (CT2770)

Card Type	Sound card
Chip Set	Creative Technology
Maximum Onboard Memory	None
I/O Options	Line in connector, microphone in connector, line out connector, speaker out connector, game/MIDI port, CD-ROM audio in connector, CD-ROM interface, PC internal speaker
Data Bus	16-bit ISA



CONNECTIONS			
Function	Label	Function	Label
Line in connector	CN1	Game/MIDI port	CN5
Microphone connector	CN2	Panasonic CD-ROM interface	CN6
Line out connector	CN3	CD-ROM audio in connector	J4
Speaker out connector	CN4	PC internal speaker	JP15

USER CONFIGURABLE SETTINGS			
Function	Label	Position	
í Factory configured – do not alter	CRE	Unidentified	
í Factory configured – do not alter	JP16	Unidentified	
í Factory configured – do not alter	JP17	Unidentified	
í Factory configured – do not alter	JP18	Unidentified	
í Joystick enabled	JYEN	Closed	
Joystick disabled	JYEN	Open	
í MP-401 enabled	MPUE N	Closed	
MP-401 disabled	MPUE N	Open	
í MP-401 I/O address select 330	MSEL	Closed	
MP-401 I/O address select 300	MSEL	Open	

Continued on next page. . .

CREATIVE LABS, INC.
SOUNDBLASTER VALUE 16 (CT2770)

. . . continued from previous page

AUDIO I/O ADDRESS SELECTION		
Address	IOS0	IOS1
i 220	Closed	Closed
240	Open	Closed
260	Closed	Open
280	Open	Open

CSP CHIP SELECTION		
Setting	APSD	IFSD
Enabled	Open	Open
Disabled	Closed	Closed