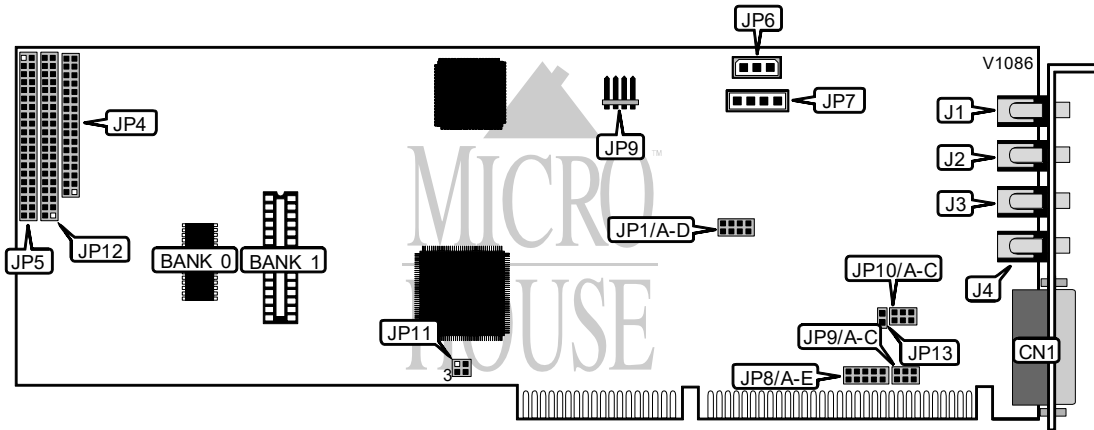


ADVANCED GRAVIS COMPUTER TECHNOLOGY, LTD. ULTRA SOUND MAX V.2.1

Card Type Sound card
Chipset Controller Unidentified
I/O Options Amplifier out, CD-ROM audio (3), CD-ROM interface (3), game/MIDI port, line in, line out, microphone in
Maximum DRAM 1MB



CONNECTIONS			
Purpose	Location	Purpose	Location
Game/MIDI port	CN1	Mitsumi CD-ROM interface	JP5
Mic in	J1	Panasonic CD - audio in	JP6
Line in	J2	Mitsumi CD - audio in	JP7
Line out	J3	Sony CD - audio in	JP9
Amp out	J4	Panasonic CD-ROM interface	JP12
Sony CD-ROM interface	JP4		

BASE ADDRESS SELECTION				
Address	JP1/A	JP1/B	JP1/C	JP1/D
220h	Closed	Open	Closed	Closed
210h	Open	Closed	Closed	Closed
230h	Open	Open	Closed	Closed
240h	Closed	Closed	Open	Closed
250h	Open	Closed	Open	Closed
260h	Closed	Open	Open	Closed

Continued next page...

ADVANCED GRAVIS COMPUTER TECHNOLOGY, LTD.
ULTRA SOUND MAX V.2.1

... continued from previous page.

CD-ROM ADDRESS SELECTION	
Address	JP11
í 360h	All open
320h	Pins 1 & 2, 3 & 4 closed
330h	Pins 1 & 2 closed
340h	Pins 3 & 4 closed

CD-ROM INTERFACE CONFIGURATION	
Setting	JP13
í Enabled (Panasonic)	Closed
Disabled (Mitsumi & Sony)	Open

DMA CHANNEL CONFIGURATION						
Channel	JP9/A	JP9/B	JP9/C	JP10/A	JP10/B	JP10/C
í Disabled	Open	Open	Open	Open	Open	Open
0	Closed	Open	Open	Closed	Open	Open
1	Open	Closed	Open	Open	Closed	Open
3	Open	Open	Closed	Open	Open	Closed

Note: Panasonic CD-ROM interface do not use DMA, use the default setting for your selection.
If you have a double speed Mitsumi CD-ROM interface on your sound card DMA channels 5, 6, & 7 are not supported. Use the default setting for your selection.

INTERRUPT SELECTION					
IRQ	JP8/A	JP8/B	JP8/C	JP8/D	JP8/E
2/9	Open	Open	Closed	Open	Open
3	Closed	Open	Open	Open	Open
5	Open	Closed	Open	Open	Open
10	Open	Open	Open	Closed	Open
11	Open	Open	Open	Open	Closed

Note: Panasonic CD-ROM interface do not use IRQ, use the default setting for your selection.

DRAM CONFIGURATION		
Size	Bank (Bank)
512KB	(1) 512K x 8	NONE
1MB	(1) 512K x 8	(1) 512K x 8