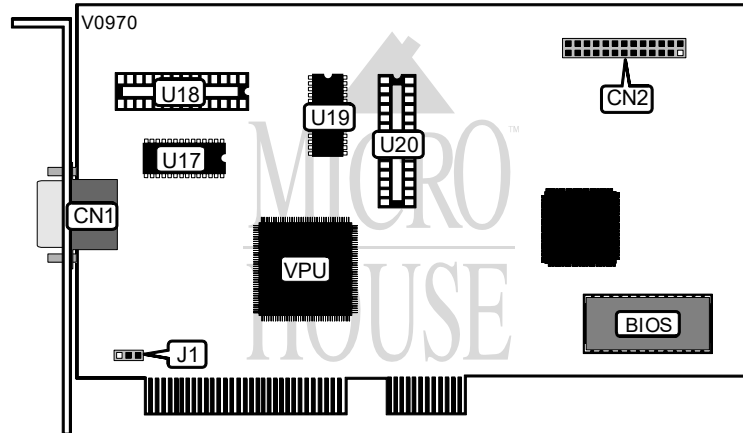


STB SYSTEMS, INC.  
LIGHTSPEED PCI (REV. B)

Category	Video
Video Types Supported	XVGA
Video Processor	Unidentified
Highest Resolution Supported	1280 x 1024
Data Bus Type	32-bit PCI
Memory Type	DRAM
Maximum Onboard Memory	2MB



CONNECTIONS			
Purpose	Location	Purpose	Location
15-pin analog video port	CN1	VGA feature connector	CN2

INTERRUPT SELECTION	
IRQ 2	J1
Enabled	Pins 1 & 2 closed
Disabled	Pins 2 & 3 closed

DRAM CONFIGURATION		
Size	Bank 0 (U17 ; U19)	Bank 1 (U19 ; U20)
1MB	(2) 256K x 16	NONE
2MB	(2) 256K x 16	(2) 256K x 16