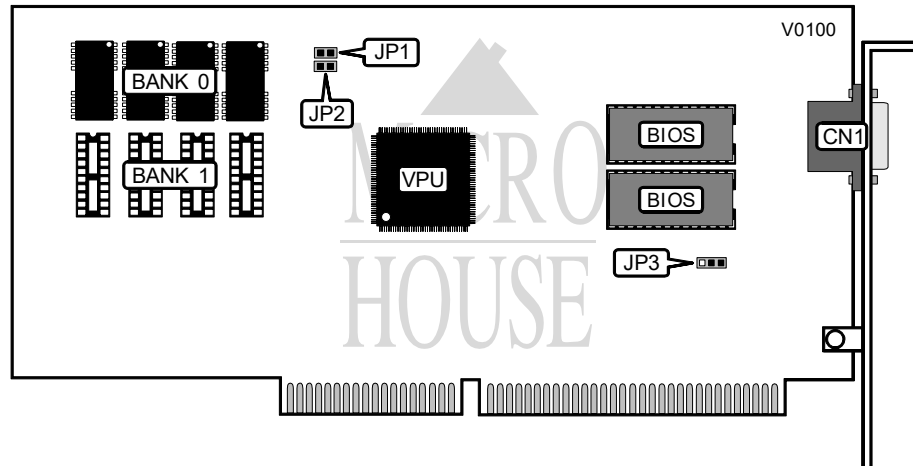


REALTEK RTVGA-V3-91026-A

Category Video
Video Types Supported XVGA
Video Processor ET4000
Highest Resolution Supported 1024 x 768
Data Bus Type 16-bit ISA
Memory Type DRAM
Maximum Onboard Memory 1024B



CONNECTIONS	
Purpose	Location
15-pin analog video port	CN1

ADDRESS DECODE SELECTION	
Setting	JP1
í Slow	Closed
Fast	On

VIDEO INTERFACE MODE CONFIGURATION	
Mode	JP2
í Interfaced	Open
Non-Interfaced	Closed

Continued on next page . . .

UNIDENTIFIED
RTVGA-V3-91026-A

... continued from previous page

VIDEO INTERRUPT SELECTION	
IRQ	JP3
2/9	Pins 2 & 3 closed
7	Pins 1 & 2 closed

DRAM CONFIGURATION		
Size	Bank 1	Bank 2
512KB	(4) 44256	None
1024KB	(4) 44256	(4) 44256