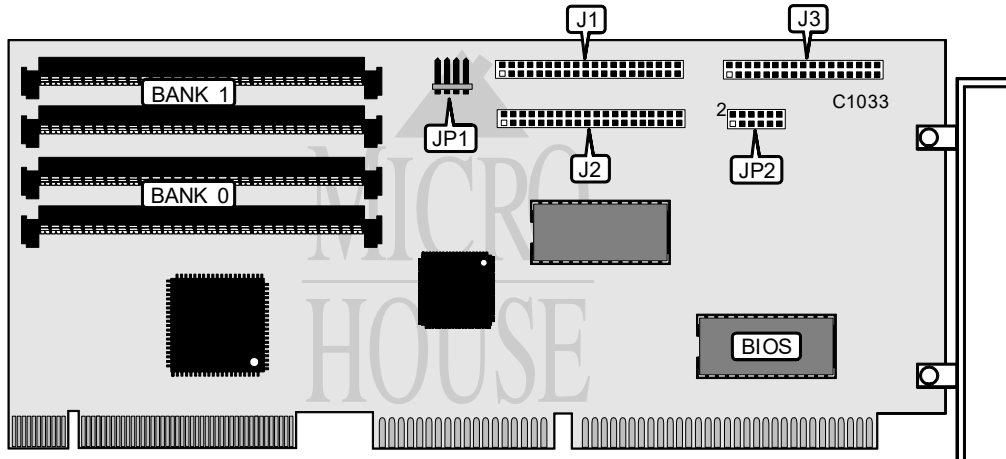


# DATA TECHNOLOGY CORPORATION

## DTC2X77VL

Data Bus  
Card Size  
Hard Drives supported  
Floppy drives supported

32-bit VESA Local Bus  
Three-quarter length, full-height card  
Four IDE (AT) drives  
Two 360KB, 720KB, 1.2MB, or 1.44MB drives



CONNECTIONS				
Function	Location	Function	Location	Location
40-pin primary IDE(AT) connector	JP1	34-pin cable connector - floppy drive	JP3	
40-pin secondary IDE(AT) connector	JP2	Connector - drive active LED	JP1	

USER CONFIGURABLE SETTINGS			
Function	Label	Position	
í Floppy drive interface enabled	JP2/4	Closed	
Floppy drive interface disabled	JP2/4	Open	
í Hard drive primary I/O address select	JP2/5	Closed	
Hard drive secondary I/O address select	JP2/5	Open	
í Factory configured - do not alter	JP2/6	Closed	

BIOS ADDRESS SELECTION			
Address	JP2/pins 1 & 2	JP2/pins 3 & 4	JP2/pins 5 & 6
C8000h-CBFFFh	Closed	Open	Open
CC000h-CEFFEh	Open	Closed	Open
D0000h-D3FFEh	Closed	Closed	Open
D4000h-D7EEEh	Open	Open	Closed
D8000h-DBFFFh	Closed	Open	Closed
í DC000h-DEFFFh	Closed	Closed	Closed
Disabled	Open	Open	Open

Continued on next page. . .

DATA TECHNOLOGY CORPORATION  
DTC 2X77VL

... continued from previous page

DRAM CONFIGURATION		
Size	Bank 0	Bank 1
512KB	(2) 256 x 9	None
1KB	(2) 256 x 9	(2) 256 x 9
1.5KB	(2) 256 x 9	(2) 1MB x 9
2MB	(2) 1MB x 9	None
2.5MB	(2) 1MB x 9	(2) 256 x 9
4MB	(2) 1MB x 9	(2) 1MB x 9
8MB	(2) 4MB x 9	None
8.5MB	(2) 4MB x 9	(2) 256 x 9
8.5MB	(2) 256 x 9	(2) 4MB x 9
10MB	(2) 1MB x 9	(2) 4MB x 9
10MB	(2) 4MB x 9	(2) 1MB x 9
16MB	(2) 4MB x 9	(2) 4MB x 9