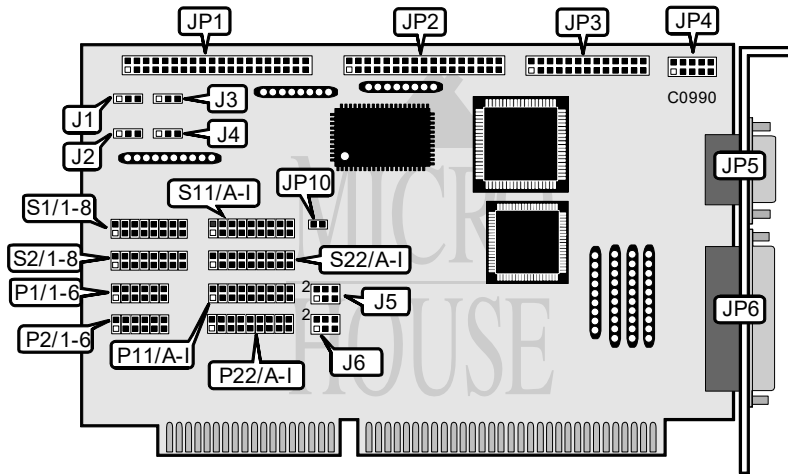


# SUNIX CO., LTD.

## SUN-5246HT (EX-3050)

Data Bus  
 Card Size  
 Hard Drives supported  
 Floppy drives supported

16-bit ISA  
 Half-length, full-height card  
 Two IDE (AT) drives  
 Two 360KB, 720KB, 1.2MB, 1.44MB or 2.88 MB drives



CONNECTIONS				
Function	Location	Function	Location	
40-pin IDE(AT) connector	JP1	10-pin serial port 2 - internal	JP4	
34-pin cable connector - floppy drive	JP2	9-pin serial port 1 - external	JP5	
26-pin parallel port 2 - internal	JP3	25-pin parallel port 1 - external	JP6	

USER CONFIGURABLE SETTINGS			
Function	Label	Position	
í Floppy drive interface enabled	J1	Pins 1 & 2 closed	
Floppy drive interface disabled	J1	Pins 2 & 3 closed	
í Floppy drive interface primary address select	J2	Pins 1 & 2 closed	
Floppy drive interface secondary address select	J2	Pins 2 & 3 closed	
í IDE(AT) interface enabled	J3	Pins 1 & 2 closed	
IDE(AT) interface disabled	J3	Pins 2 & 3 closed	
í IDE(AT) primary address select	J4	Pins 1 & 2 closed	
IDE(AT) secondary address select	J4	Pins 2 & 3 closed	
í Factory configured - do not alter	JP10	Open	

Continued on next page. . .

SUNIX CO., LTD.  
 SUN-5246HT (EX-3050)

...continued from previous page

SERIAL PORT 1 ADDRESS SELECTION								
COM	S1/1	S1/2	S1/3	S1/4	S1/5	S1/6	S1/7	S1/8
í COM1(3F8h)	Closed	Open	Open	Open	Open	Open	Open	Open
COM2(2F8h)	Open	Closed	Open	Open	Open	Open	Open	Open
COM3(3E8h)	Open	Open	Closed	Open	Open	Open	Open	Open
COM4(2E8h)	Open	Open	Open	Closed	Open	Open	Open	Open
COM5(3F0h)	Open	Open	Open	Open	Closed	Open	Open	Open
COM6(3E0h)	Open	Open	Open	Open	Open	Closed	Open	Open
COM7(2E0h)	Open	Open	Open	Open	Open	Open	Closed	Open
COM8(260h)	Open	Open	Open	Open	Open	Open	Open	Closed

SERIAL PORT 2 ADDRESS SELECTION								
COM	S2/1	S2/2	S2/3	S2/4	S2/5	S2/6	S2/7	S2/8
COM1(3F8h)	Closed	Open	Open	Open	Open	Open	Open	Open
í COM2(2F8h)	Open	Closed	Open	Open	Open	Open	Open	Open
COM3(3E8h)	Open	Open	Closed	Open	Open	Open	Open	Open
COM4(2E8h)	Open	Open	Open	Closed	Open	Open	Open	Open
COM5(3F0h)	Open	Open	Open	Open	Closed	Open	Open	Open
COM6(3E0h)	Open	Open	Open	Open	Open	Closed	Open	Open
COM7(2E0h)	Open	Open	Open	Open	Open	Open	Closed	Open
COM8(260h)	Open	Open	Open	Open	Open	Open	Open	Closed

PARALLEL PORT 1 ADDRESS SELECTION						
LPT	P1/1	P1/2	P1/3	P1/4	P1/5	P1/6
í LPT1(3Bch)	Closed	Open	Open	Open	Open	Open
LPT2(378h)	Open	Closed	Open	Open	Open	Open
LPT3(278h)	Open	Open	Closed	Open	Open	Open
LPT4(268h)	Open	Open	Open	Closed	Open	Open
LPT5(27Ch)	Open	Open	Open	Open	Closed	Open
LPT6(26Ch)	Open	Open	Open	Open	Open	Closed

PARALLEL PORT 2 ADDRESS SELECTION						
LPT	P2/1	P2/2	P2/3	P2/4	P2/5	P2/6
LPT1(3Bch)	Closed	Open	Open	Open	Open	Open
í LPT2(378h)	Open	Closed	Open	Open	Open	Open
LPT3(278h)	Open	Open	Closed	Open	Open	Open
LPT4(268h)	Open	Open	Open	Closed	Open	Open
LPT5(27Ch)	Open	Open	Open	Open	Closed	Open
LPT6(26Ch)	Open	Open	Open	Open	Open	Closed

Continued on next page...

SUNIX CO., LTD.  
 SUN-5246HT (EX-3050)

...continued from previous page

SERIAL PORT 1 INTERRUPT SELECTION									
IRQ	S11/A	S11/B	S11/C	S11/D	S11/E	S11/F	S11/G	S11/H	S11/I
IRQ3	Closed	Open	Open	Open	Open	Open	Open	Open	Open
í IRQ4	Open	Closed	Open	Open	Open	Open	Open	Open	Open
IRQ5	Open	Open	Closed	Open	Open	Open	Open	Open	Open
IRQ7	Open	Open	Open	Closed	Open	Open	Open	Open	Open
IRQ9	Open	Open	Open	Open	Closed	Open	Open	Open	Open
IRQ10	Open	Open	Open	Open	Open	Closed	Open	Open	Open
IRQ11	Open	Open	Open	Open	Open	Open	Closed	Open	Open
IRQ12	Open	Open	Open	Open	Open	Open	Open	Closed	Open
IRQ15	Open	Open	Open	Open	Open	Open	Open	Open	Closed

SERIAL PORT 2 INTERRUPT SELECTION									
IRQ	S22/A	S22/B	S22/C	S22/D	S22/E	S22/F	S22/G	S22/H	S22/I
í IRQ3	Closed	Open	Open	Open	Open	Open	Open	Open	Open
IRQ4	Open	Closed	Open	Open	Open	Open	Open	Open	Open
IRQ5	Open	Open	Closed	Open	Open	Open	Open	Open	Open
IRQ7	Open	Open	Open	Closed	Open	Open	Open	Open	Open
IRQ9	Open	Open	Open	Open	Closed	Open	Open	Open	Open
IRQ10	Open	Open	Open	Open	Open	Closed	Open	Open	Open
IRQ11	Open	Open	Open	Open	Open	Open	Closed	Open	Open
IRQ12	Open	Open	Open	Open	Open	Open	Open	Closed	Open
IRQ15	Open	Open	Open	Open	Open	Open	Open	Open	Closed

PARALLEL PORT 1 INTERRUPT SELECTION									
IRQ	P11/A	P11/B	P11/C	P11/D	P11/E	P11/F	P11/G	P11/H	P11/I
IRQ3	Closed	Open	Open	Open	Open	Open	Open	Open	Open
IRQ4	Open	Closed	Open	Open	Open	Open	Open	Open	Open
IRQ5	Open	Open	Closed	Open	Open	Open	Open	Open	Open
í IRQ7	Open	Open	Open	Closed	Open	Open	Open	Open	Open
IRQ9	Open	Open	Open	Open	Closed	Open	Open	Open	Open
IRQ10	Open	Open	Open	Open	Open	Closed	Open	Open	Open
IRQ11	Open	Open	Open	Open	Open	Open	Closed	Open	Open
IRQ12	Open	Open	Open	Open	Open	Open	Open	Closed	Open
IRQ15	Open	Open	Open	Open	Open	Open	Open	Open	Closed

PARALLEL PORT 2 INTERRUPT SELECTION									
IRQ	P22/A	P22/B	P22/C	P22/D	P22/E	P22/F	P22/G	P22/H	P22/I
IRQ3	Closed	Open	Open	Open	Open	Open	Open	Open	Open
IRQ4	Open	Closed	Open	Open	Open	Open	Open	Open	Open
í IRQ5	Open	Open	Closed	Open	Open	Open	Open	Open	Open
IRQ7	Open	Open	Open	Closed	Open	Open	Open	Open	Open
IRQ9	Open	Open	Open	Open	Closed	Open	Open	Open	Open
IRQ10	Open	Open	Open	Open	Open	Closed	Open	Open	Open
IRQ11	Open	Open	Open	Open	Open	Open	Closed	Open	Open
IRQ12	Open	Open	Open	Open	Open	Open	Open	Closed	Open
IRQ15	Open	Open	Open	Open	Open	Open	Open	Open	Closed

Continued on next page. . .

SUNIX CO., LTD.  
SUN-5246HT (EX-3050)

...continued from previous page

DMA CHANNEL SELECTION		
Channel	J5	J6
0	Pins 1 & 2 closed	Pins 1 & 2 closed
1	Pins 3 & 4 closed	Pins 3 & 4 closed
3	Pins 5 & 6 closed	Pins 5 & 6 closed