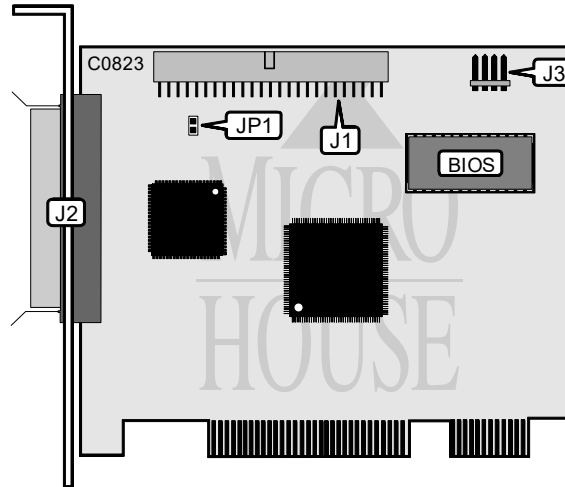


INITIO CORPORATION INI-9100

Q3/95

Data bus: 32-bit PCI
 Size: Half-length, full-height card
 Hard drive supported: Up to seven SCSI drives
 Floppy drives supported: None



CONNECTIONS	
Function	Location
50-pin SCSI connector - internal	J1
50-pin SCSI connector - external	J2
4-pin connector - drive active LED	J3

USER CONFIGURABLE SETTINGS		
Function	Location	Setting
Active onboard termination disabled	JP1	open
Active onboard termination enabled	JP1	closed