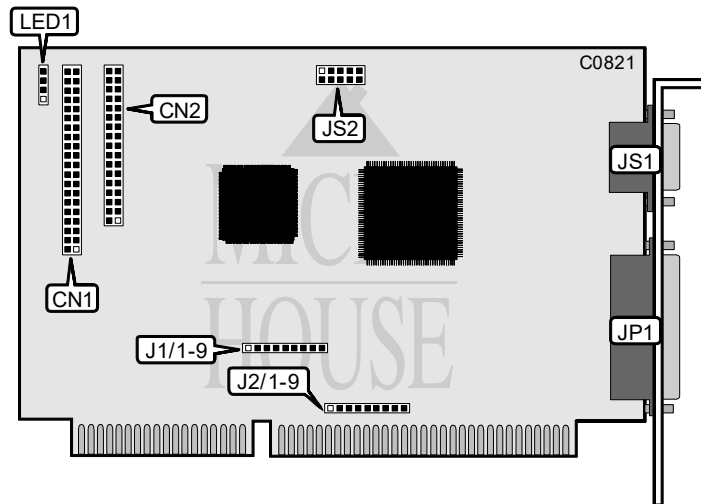


# JC INFORMATION SYSTEMS CORPORATION IDE FLOPPY/HARD DISK CONTROLLER (MODEL 1120)

Q3/95

Data bus: 16-bit ISA  
 Size: Half-length, full-height card  
 Hard drive supported: Two IDE (AT) interface drives  
 Floppy drives supported: Two 360KB, 720KB, 1.2MB, or 1.44MB drives



CONNECTIONS	
Function	Location
40-pin IDE (AT) interface connector	CN1
34-pin control cable connector - floppy drive	CN2
25-pin parallel port - external	JP1
9-pin serial port 1 - external	JS1
10-pin serial port 2 - internal	JS2
4pin connector - drive active LED	LED1

Continued on next page. . .

# JC INFORMATION SYSTEMS CORPORATION

## IDE FLOPPY/HARD DISK CONTROLLER (MODEL 1120)

...continued from previous page

USER CONFIGURABLE SETTINGS		
Function	Location	Setting
Parallel port is LPT2	J1/pins 1 & 2	closed
Parallel port is LPT1	J1/pins 2 & 3	closed
Serial port 1 is COM2	J1/pins 4 & 5	closed
Serial port 1 is COM1	J1/pins 5 & 6	closed
Serial port 2 is COM2	J1/pins 7 & 8	closed
Serial port 2 is COM1	J1/pins 8 & 9	closed
Parallel port IRQ5 select	J2/pins 1 & 2	closed
Parallel port IRQ7 select	J2/pins 2 & 3	closed
Serial port 1 IRQ3 select	J2/pins 4 & 5	closed
Serial port 1 IRQ4 select	J2/pins 5 & 6	closed
Serial port 2 IRQ3 select	J2/pins 7 & 8	closed
Serial port 2 IRQ4 select	J2/pins 8 & 9	closed