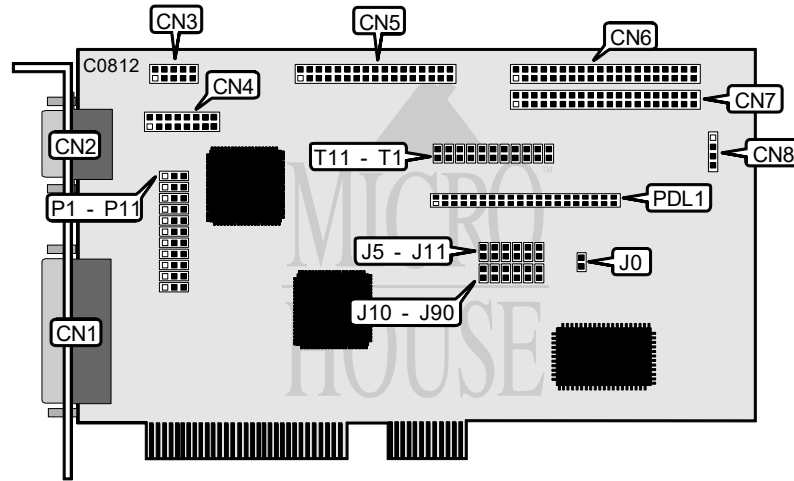


TYAN COMPUTER CORPORATION

S1363-004 (Rev. 1.0)

Q3/95

Data bus: 32-bit PCI
 Size: Half-length, Full-height card
 Hard drive supported: Four Enhanced IDE (AT) interface drives
 Floppy drives supported: Two 360KB, 720KB, 1.2MB, or 1.44MB drives



CONNECTIONS	
Function	Location
25-pin parallel port - external	CN1
9-pin serial port - external	CN2
10-pin serial port - internal	CN3
16-pin game port - internal	CN4
34-pin primary control cable connector - floppy drive	CN5
40-pin primary IDE (AT) interface connector	CN6
40-pin secondary IDE (AT) interface connector	CN7
4-pin connector - drive active LED	CN8
40-pin connector - paddle card	PDL1

Continued on next page. . .

TYAN COMPUTER CORPORATION
S1363-004 (Rev. 1.0)

...continued from previous page

USER CONFIGURABLE SETTINGS		
Function	Location	Setting
í Floppy drive disk change signal not intercepted	J0	open
Floppy drive disk change being intercepted	J0	closed
í Fixed I/O address	J1	closed
Relocatable I/O address	J1	open
í Secondary IDE (AT) channel IRQ to ISA IRQ15	J4	closed
No secondary IDE (AT) channel IRQ to ISA IRQ15	J4	open
í Primary IDE (AT) channel legacy IRQ to ISA IRQ14	J5	closed
No primary IDE (AT) channel legacy IRQ to ISA IRQ14	J5	open
í No buffered secondary IDE (AT) legacy IRQ to IRQ15	J6	open
Buffered secondary IDE (AT) legacy IRQ to IRQ15	J6	closed
í No buffered primary IDE (AT) legacy IRQ to IRQ14	J7	open
Buffered primary IDE (AT) legacy IRQ to IRQ14	J7	closed
í Factory configured - do not alter	J8	N/A
í Factory configured - do not alter	J9	N/A
í Factory configured - do not alter	J10	N/A
í Native mode IDE (AT) IRQ not used	J11	open
Native mode IDE (AT) IRQ's to PCI INTA	J11	closed
í Factory configured - do not alter	J90	N/A
í Floppy drive order A:, B: normal	P1/pins 2 & 3	closed
Floppy drive order A:, B: exchange	P1/pins 1 & 2	closed
í Floppy controller I/O address is 3F0h	P2/pins 2 & 3	closed
Floppy controller I/O address is 370h	P2/pins 1 & 2	closed
í Floppy controller enabled	P3/pins 2 & 3	closed
Floppy controller disabled	P3/pins 1 & 2	closed
í Factory configured - do not alter	P10	N/A
í Factory configured - do not alter	P11	N/A
í Factory configured - do not alter	T1	N/A
í IRQ4 for serial port 1	T4	closed
No interrupt for serial port 1	T4	open
í IRQ3 for serial port 2	T5	closed
No interrupt for serial port 2	T5	open
í ISA (AT) uni-directional printer port mode	T6	open
PS2 bi-directional compatible mode	T6	closed
í Game port enabled	T7	closed
Game port disabled	T7	open

Continued on next page. . .

TYAN COMPUTER CORPORATION

S1363-004 (Rev. 1.0)

...continued from previous page

USER CONFIGURABLE SETTINGS (CON'T)		
Function	Location	Setting
í Factory configured - do not alter	T8	N/A
í Factory configured - do not alter	T9	N/A
í Factory configured - do not alter	T10	N/A
í Factory configured - do not alter	T11	N/A

ACCESS IDE (AT) CHANNELS I/O ADDRESS CONFIGURATIO I		
Setting	J2	J3
í Enabled	open	closed
Disabled	closed	open

PARALLEL PORT CONFIGURATION		
Port	P8	P9
í 1 (378h - 37Fh)	pins 2 & 3 closed	pins 2 & 3 closed
2 (278h - 27Fh)	pins 1 & 2 closed	pins 1 & 2 closed
3 (3BCh - 3BEh)	pins 1 & 2 closed	pins 2 & 3 closed
Disabled	pins 2 & 3 closed	pins 1 & 2 closed

SERIAL PORT 1 CONFIGURATION		
COM	P4	P5
í COM1 (3F8h)	pins 2 & 3 closed	pins 2 & 3 closed
COM3 (3E8h)	pins 1 & 2 closed	pins 1 & 2 closed
COM4 (2E8h)	pins 2 & 3 closed	pins 1 & 2 closed
Disabled	pins 1 & 2 closed	pins 2 & 3 closed

SERIAL PORT 2 CONFIGURATION		
COM	P6	P7
í COM2 (2F8h)	pins 2 & 3 closed	pins 2 & 3 closed
COM3 (3E8h)	pins 2 & 3 closed	pins 1 & 2 closed
COM4 (2E8h)	pins 1 & 2 closed	pins 1 & 2 closed
Disabled	pins 1 & 2 closed	pins 2 & 3 closed

Continued on next page. . .

TYAN COMPUTER CORPORATION
S1363-004 (Rev. 1.0)

...continued from previous page

PARALLEL PORT INTERRUPT SELECTION		
IRQ	T2	T3
i 7	closed	open
5	open	closed
Disabled	open	open

SERIAL PORTS ADVANCED INTERRUPT CONFIGURATION				
Port 1	Port 2	T3	T4	T5
i IRQ4	IRQ3	open	closed	closed
IRQ3	IRQ4	open	pin 1 to T5/pin 1	pin 2 to T4/pin 2
IRQ5	IRQ3	open	pin 1 to T5/pin 1	pin 1 to T4/pin 1
IRQ4	IRQ5	pin 2 to T4/pin 2	pin 2 to T3/pin 2	closed
IRQ4	Disabled IRQ3	open	closed	open
Disabled IRQ4	IRQ3	open	open	closed
Disabled IRQ3	IRQ4	open	pin 2 to T5/pin 2	pin2 to T4/pin 2
Disabled IRQ4	IRQ5	pin 2 to T4/pin 2	pin 2 to T3/pin 2	open

MISCELLANEOUS TECHNICAL NOTES
Note: In order to utilize the S1366's IDE and I/O functions, the S136x paddle card must be installed on connector PDL1.