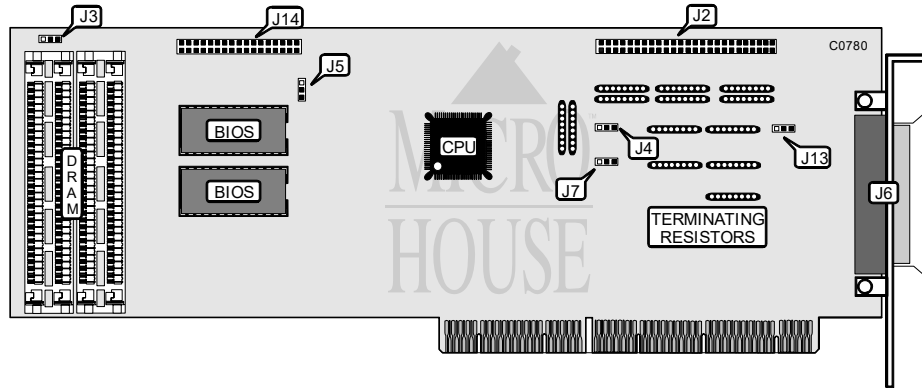


# AMERICAN MEGATRENDS, INC. EISA FAST DISK

Q3/95

Data bus: 32-bit EISA  
 Size: Three/quarter-length, full-height card  
 Hard drive supported: Up to 15 SCSI devices  
 Floppy drives supported: Two 360KB, 720KB, 1.2MB, 1.44MB drives



CONNECTIONS	
Function	Location
50-pin SCSI interface - internal	J2
50-pin SCSI interface - external	J6
34-pin cable connector - floppy drive	J14

USER CONFIGURABLE SETTINGS			
Function	Location	Setting	
f Factory configured - do not alter	J3	open	
f Factory configured - do not alter	J4	pins 1 & 2 closed	
f Factory configured - do not alter	J5	pins 1 & 2 closed	
f Factory configured - do not alter	J7	open	
f Factory configured - do not alter	J13	open	

DRAM CONFIGURATION	
Size	DRAM
1MB	(4) 256K x 9
4MB	(4) 1M x 9
16MB	(4) 4M x 9