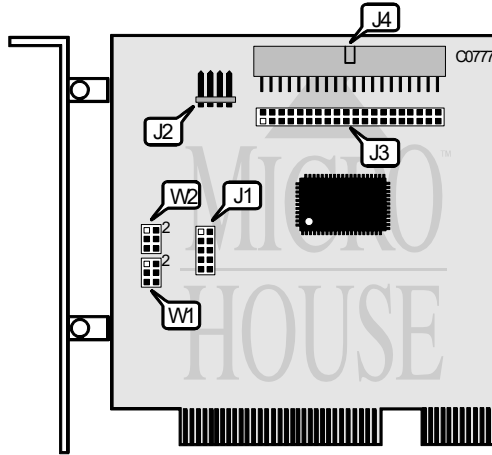


DATA TECHNOLOGY CORPORATION
DTC-2130D (900158-89A)

Q3/95

Data bus: 32-bit PCI
 Size: Half-length, half-height card
 Hard drive supported: Four IDE(AT) interface drives
 Floppy drives supported: None



CONNECTIONS	
Function	Location
DTC-1415 ISA B Interrupt adapter connector	J1
4-pin connector - drive active LED	J2
40-pin connector - primary IDE(AT) interface	J3
40-pin connector - secondary IDE(AT) interface	J4
Note: Connector J1 is intended for use in systems that do not support redirected PCI interrupts.	

USER CONFIGURABLE SETTINGS		
Function	Location	Setting
Primary port (IRQ14) INTA select	W1	pins 1 & 3 closed
Primary port (IRQ14) INTB select	W1	pins 2 & 4 closed
Primary port (IRQ14) INTC select	W1	pins 3 & 5 closed
Primary port (IRQ14) INTD select	W1	pins 4 & 6 closed
Secondary port (IRQ15) INTA select	W2	pins 1 & 3 closed
Secondary port (IRQ15) INTB select	W2	pins 2 & 4 closed
Secondary port (IRQ15) INTC select	W2	pins 3 & 5 closed
Secondary port (IRQ15) INTD select	W2	pins 4 & 6 closed