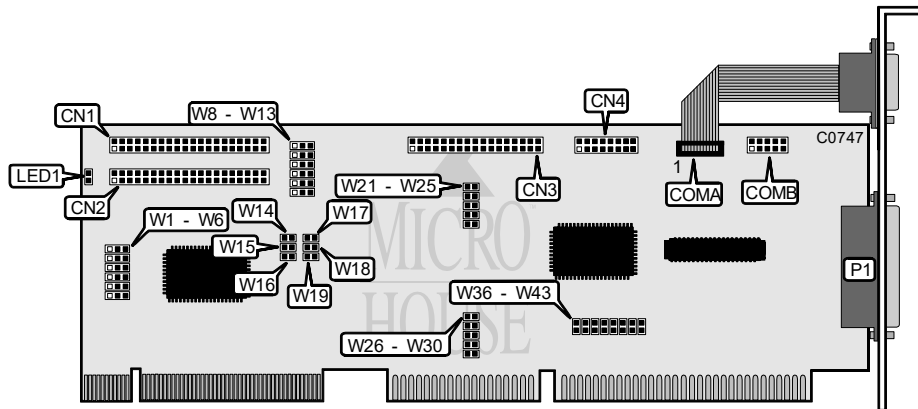


MICRO EQUIPMENT CORPORATION

UN-1086

Q3/95

Data bus: 32-bit VL-Bus
 Size: Full-length, full-height card
 Hard drive supported: Four Enhanced IDE (AT) interface drives
 Floppy drives supported: Two 360KB, 720KB, 1.2MB, or 1.44MB drives



CONNECTIONS	
Function	Location
40-pin IDE (AT) interface connector	CN1
40-pin IDE (AT) interface connector	CN2
34-pin control cable connector - floppy drive	CN3
16-pin game port - internal	CN4
10-pin serial port - internal	COMA
10-pin serial port - internal	COMB
2-pin connector - drive active LED	LED1
25-pin parallel port - external	P1

Continued on next page. . .

MICRO EQUIPMENT CORPORATION

UN-1086

...continued from previous page

USER CONFIGURABLE SETTINGS		
Function	Location	Setting
í Factory configured - do not alter	W1	N/A
í Factory configured - do not alter	W2	N/A
í Factory configured - do not alter	W3	N/A
í Factory configured - do not alter	W4	N/A
í Factory configured - do not alter	W5	N/A
IOCHRDY 759AF select	W6/pins 2 & 3	closed
IOCHRDY ISA select	W6/pins 1 & 2	closed
í Primary IDE (AT) interface enabled	W8/pins 2 & 3	closed
Primary IDE (AT) interface disabled	W8/pins 1 & 2	closed
í Secondary IDE (AT) interface enabled	W9/pins 2 & 3	closed
Secondary IDE (AT) interface disabled	W9/pins 1 & 2	closed
í Speed 50MHz select	W10/pins 2 & 3	closed
Speed 33MHz select	W10/ pins 1 & 2	closed
í Factory configured - do not alter	W13	N/A
í Floppy drive address is 3F0h-3F7h	W21	open
Floppy drive address is 370h-377h	W21	closed
í Floppy controller enabled	W22	open
Floppy controller disabled	W22	closed
í Parallel port output only select	W23	closed
Parallel port bi-directional select	W23	open
í Game port enabled	W24	open
Game port disabled	W24	closed
í Parallel port address is 378h	W25	open
Parallel port address is 278h	W25	closed
í COMA address is 3F8h	W26	open
COMA address is 3E8h	W26	closed
í COMA enabled	W27	open
COMA disabled	W27	closed
í Parallel port enabled	W28	open
Parallel port disabled	W28	closed
í COMB address is 2F8h	W29	open
COMB address is 2E8h	W29	closed
í COMB enabled	W30	open
COMB disabled	W30	closed

Continued on next page. . .

MICRO EQUIPMENT CORPORATION

UN-1086

...continued from previous page

IDE (AT) TIMMING & MODE CONFIGURATION			
Timing	Mode	W11	W12
240ns	3	pins 1 & 2 closed	pins 1 & 2 closed
400ns	2	pins 1 & 2 closed	pins 2 & 3 closed
500ns	1	pins 2 & 3 closed	pins 1 & 2 closed
600ns	0	pins 2 & 3 closed	pins 2 & 3 closed

HARD DRIVE DMA SELECTION						
Channel	W14	W15	W16	W17	W18	W19
5	open	open	closed	open	open	closed
6	open	closed	open	open	closed	open
7	closed	open	open	closed	open	open

SERIAL PORT 1 INTERRUPT SELECTION			
IRQ	W36	W37	W38
4	closed	open	open
3	open	closed	open
5	open	open	closed

SERIAL PORT 2 INTERRUPT SELECTION			
IRQ	W39	W40	W41
3	closed	open	open
4	open	closed	open
5	open	open	closed

PARALLEL PORT INTERRUPT SELECTION		
IRQ	W42	W43
7	closed	open
5	open	closed