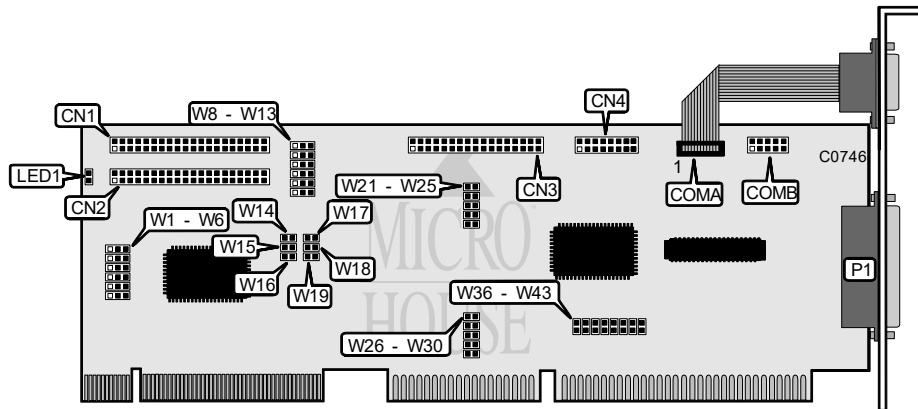


# MICRO EQUIPMENT CORPORATION

## UN-1085

Q3/95

Data bus: 32-bit VL-Bus  
 Size: Three/quarter-length, full-height card  
 Hard drive supported: Four IDE (AT) interface drives  
 Floppy drives supported: Two 360KB, 720KB, 1.2MB, or 1.44MB drives



| CONNECTIONS                                   |          |
|---|----------|
| Function                                      | Location |
| 40-pin Primary IDE (AT) interface connector   | CN1      |
| 40-pin Secondary IDE (AT) interface connector | CN2      |
| 34-pin control cable connector - floppy drive | CN3      |
| 16-pin game port - internal                   | CN4      |
| 10-pin serial port - internal                 | COMA     |
| 10-pin serial port - internal                 | COMB     |
| 2-pin connector - drive active LED            | LED1     |
| 25-pin parallel port - external               | P1       |

Continued on next page. . .

# MICRO EQUIPMENT CORPORATION

## UN-1085

...continued from previous page

| USER CONFIGURABLE SETTINGS             |                 |         |
|--|-----------------|---------|
| Function                               | Location        | Setting |
| í Factory configured - do not alter    | W1              | N/A     |
| í Factory configured - do not alter    | W2              | N/A     |
| í Factory configured - do not alter    | W3              | N/A     |
| í Factory configured - do not alter    | W4              | N/A     |
| í Factory configured - do not alter    | W5              | N/A     |
| IOCHRDY 759AF select                   | W6/pins 2 & 3   | closed  |
| IOCHRDY ISA select                     | W6/pins 1 & 2   | closed  |
| í Primary IDE (AT) interface enabled   | W8/pins 2 & 3   | closed  |
| Primary IDE (AT) interface disabled    | W8/pins 1 & 2   | closed  |
| í Secondary IDE (AT) interface enabled | W9/pins 2 & 3   | closed  |
| Secondary IDE (AT) interface disabled  | W9/pins 1 & 2   | closed  |
| í Speed 50MHz select                   | W10/pins 2 & 3  | closed  |
| Speed 33MHz select                     | W10/ pins 1 & 2 | closed  |
| í Factory configured - do not alter    | W13             | N/A     |
| í Floppy drive address is 3F0h-3F7h    | W21             | open    |
| Floppy drive address is 370h-377h      | W21             | closed  |
| í Floppy controller enabled            | W22             | open    |
| Floppy controller disabled             | W22             | closed  |
| í Parallel port output only select     | W23             | closed  |
| Parallel port bi-directional select    | W23             | open    |
| í Game port enabled                    | W24             | open    |
| Game port disabled                     | W24             | closed  |
| í Parallel port address is 378h        | W25             | open    |
| Parallel port address is 278h          | W25             | closed  |
| í COMA address is 3F8h                 | W26             | open    |
| COMA address is 3E8h                   | W26             | closed  |
| í COMA enabled                         | W27             | open    |
| COMA disabled                          | W27             | closed  |
| í Parallel port enabled                | W28             | open    |
| Parallel port disabled                 | W28             | closed  |
| í COMB address is 2F8h                 | W29             | open    |
| COMB address is 2E8h                   | W29             | closed  |
| í COMB enabled                         | W30             | open    |
| COMB disabled                          | W30             | closed  |

Continued on next page. . .

# MICRO EQUIPMENT CORPORATION

## UN-1085

...continued from previous page

| IDE (AT) TIMMING & MODE CONFIGURATION |      |                   |                   |
|---------------------------------------|------|-------------------|-------------------|
| Timing                                | Mode | W11               | W12               |
| 240ns                                 | 3    | pins 1 & 2 closed | pins 1 & 2 closed |
| 400ns                                 | 2    | pins 1 & 2 closed | pins 2 & 3 closed |
| 500ns                                 | 1    | pins 2 & 3 closed | pins 1 & 2 closed |
| 600ns                                 | 0    | pins 2 & 3 closed | pins 2 & 3 closed |

| HARD DRIVE DMA SELECTION |        |        |        |        |        |        |
|--------------------------|--------|--------|--------|--------|--------|--------|
| Channel                  | W14    | W15    | W16    | W17    | W18    | W19    |
| 5                        | open   | open   | closed | open   | open   | closed |
| 6                        | open   | closed | open   | open   | closed | open   |
| 7                        | closed | open   | open   | closed | open   | open   |

| SERIAL PORT 1 INTERRUPT SELECTION |        |        |        |
|-----------------------------------|--------|--------|--------|
| IRQ                               | W36    | W37    | W38    |
| 4                                 | closed | open   | open   |
| 3                                 | open   | closed | open   |
| 5                                 | open   | open   | closed |

| SERIAL PORT 2 INTERRUPT SELECTION |        |        |        |
|-----------------------------------|--------|--------|--------|
| IRQ                               | W39    | W40    | W41    |
| 3                                 | closed | open   | open   |
| 4                                 | open   | closed | open   |
| 5                                 | open   | open   | closed |

| PARALLEL PORT INTERRUPT SELECTION |        |        |
|-----------------------------------|--------|--------|
| IRQ                               | W42    | W43    |
| 7                                 | closed | open   |
| 5                                 | open   | closed |