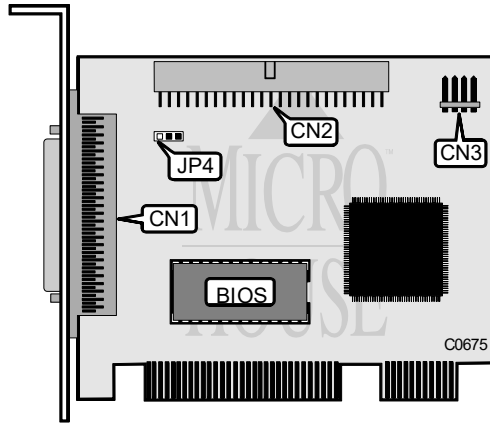


Q LOGIC CORPORATION FAST!SCSI PCI BASIC

Q2/95

Data bus: PCI
 Size: Half-length, half-height card
 Hard drive supported: Up to seven SCSI devices
 Floppy drives supported: N/A



CONNECTIONS	
Function	Location
50-pin SCSI connector - external	CN1
50-pin SCSI connector - internal	CN2
4-pin connector - Drive active LED	CN3

USER CONFIGURABLE SETTINGS		
Function	Location	Setting
SCSI termination - enabled	JP4	all open
SCSI termination - disabled	JP4	pins 2 & 3 closed