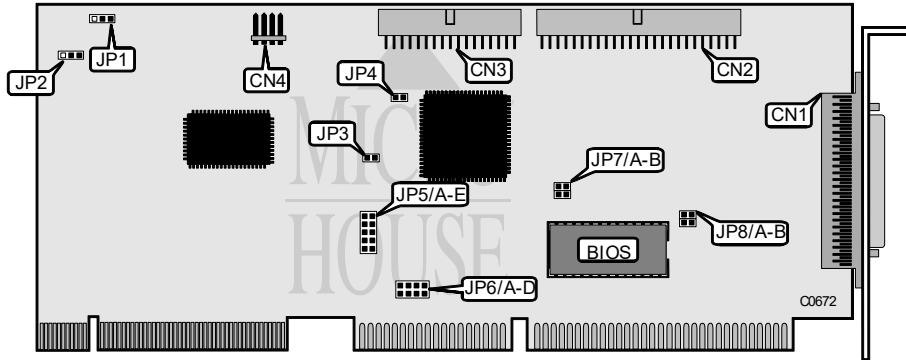


ATC/UNITRON COMPUTERS & COMPUTER PARTS
 Q LOGIC CORPORATION
 FAST!SCSI VESA LOCAL FL

Q2/95

Data bus: VESA local bus
 Size: Full-length, full-height card
 Hard drive supported: Up to seven SCSI devices
 Floppy drives supported: Two 360KB, 720KB, 1.2MB, or 1.44MB drives



CONNECTIONS	
Function	Location
50-pin SCSI connector - external	CN1
50-pin SCSI connector - internal	CN2
34-pin Floppy drive connector	CN3
4-pin connector - Drive active LED	CN4

Continued on next page . . .

**ATC/UNITRON COMPUTERS & COMPUTER PARTS
Q LOGIC CORPORATION
FAST!SCSI VESA LOCAL FL**

... continued from previous page

USER CONFIGURABLE SETTINGS		
Function	Location	Setting
í I/O Address - 330h	JP2	pins 1 & 2 closed
I/O Address - 230h	JP2	pins 2 & 3 closed
í Floppy drive - disabled	JP4	open
Floppy drive - enabled	JP4	closed
í SCSI termination - enabled	JP3	open
SCSI termination - disabled	JP3	closed
í VESA bus forced to 50Mhz - disabled	JP1	open
VESA bus forced to 50Mhz - enabled	JP1	closed
í Data transfer mode asynchronous	JP5/A	open
Data transfer mode synchronous	JP5/A	closed
í SCSI ID7	JP5/B	open
SCSI ID6	JP5/B	closed
í Parity - enabled	JP5/C	open
Parity - disabled	JP5/C	closed

BIOS SELECT		
Setting	JP8/A	JP8/B
í Enabled	closed	open
Disabled	open	open

BIOS ADDRESS SELECT		
Address	JP7/A	JP7/B
í C8000	open	open
CC000	open	closed
D8000	closed	open
DC000	closed	closed

INTERRUPT SELECT						
IRQ	JP6/A	JP6/B	JP6/C	JP6/D	JP5/D	JP5/E
í IRQ11	open	closed	open	open	open	open
IRQ10	closed	open	open	open	closed	open
IRQ12	open	open	closed	open	closed	closed
IRQ15	open	open	open	closed	open	closed