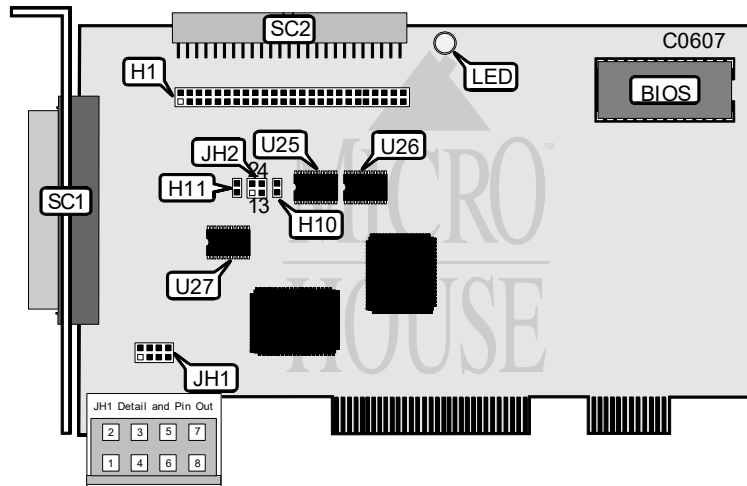


TYAN COMPUTER CORPORATION S1365 (REV. 1.0)

Q3/94

Data bus: 32-bit PCI
 Size: Full-length, full-height card
 Hard drive supported: Up to twenty one SCSI Interface drives
 Floppy drives supported: None



CONNECTIONS	
Function	Location
50-pin connector - internal SCSI interface	H1
Drive activity LED	LED
50-pin connector - external SCSI 2 interface	SC1
68-pin connector - internal SCSI 3 interface	SC2
Active terminators	U25, U26
Active terminator for wide SCSI device	U27

USER CONFIGURABLE SETTINGS		
Function	Location	Setting
On-board terminators disabled	JH2	pins 1 & 2 closed
On-board terminators enabled	JH2	pins 1 & 2 open
On-board wide portion terminator disabled	JH2	pins 3 & 4 closed
On-board wide portion terminator enabled	JH2	pins 3 & 4 open
Software used to enable/disable SCSI active terminator	H10	closed
Software program not used to control active terminator	H10	open
Software used to enable/disable SCSI wide terminator	H11	closed
Software program not used to control wide terminator	H11	open

Continued on next page . . .

TYAN COMPUTER CORPORATION
S1365 REV.1.0

. . . continued from previous page

PCI INTERRUPT LINE SELECTION JH1	
Interrupt	Pins
PCI INTA	pins 1 & 2 closed
PCI INTB	pins 3 & 4 closed
PCI INTC	pins 5 & 6 closed
PCI INTD	pins 7 & 8 closed