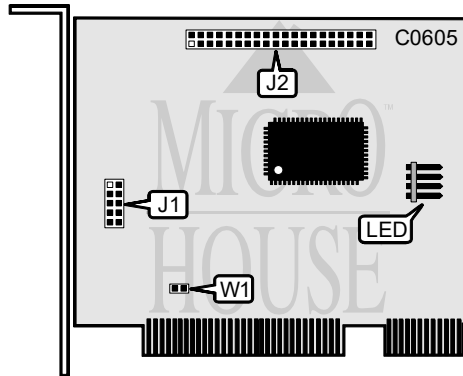


DATA TECHNOLOGY CORPORATION DTC 2130 (900148-89B)

Data bus: 32-bit PCI
 Size: Full-length, full-height card
 Hard drive supported: Two IDE(AT) Interface drives
 Floppy drives supported: None



CONNECTIONS	
Function	Location
10-pin connector - header cable connection	J1
40-pin connector - IDE interface	J2
Drive activity LED	LED

USER CONFIGURABLE SETTINGS		
Function	Location	Setting
PCI INTA redirected to IRQ14	W1	closed
PCI INTA not able to be redirected to IRQ14	W1	open

MISCELLANEOUS TECHNICAL NOTE
<p>Note: If your motherboard has an on-board IDE controller, it will have to be disabled. The DTC 2130S needs access to IRQ14 in order to operate properly in the PCI slot. Some motherboards allow you to redirect PCI INTA to IRQ14. If the PCI motherboard won't allow you to redirect PCI interrupts, then you will need to use the DTC 1415 Interrupt adapter. The DTC 1415 installs into any ISA B slot and has a header (W1) compatible with the DTC 2130S J1 header. The ISA A slot may still be used by an 8-bit card.</p>