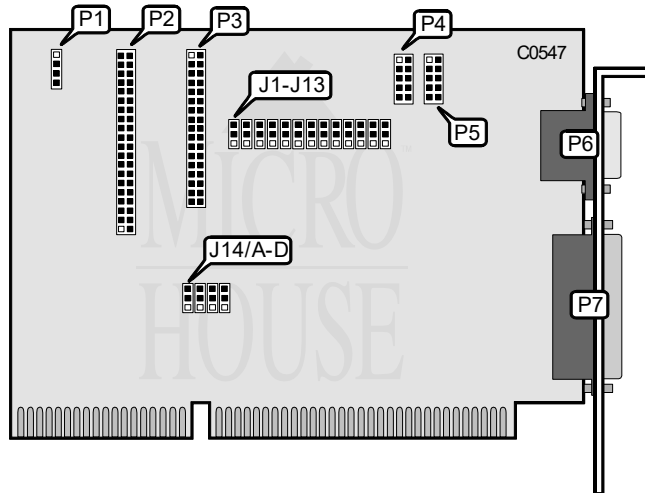


**INFORMTECH INTERNATIONAL, INC.**  
**UN-1061**

Q3/94

Data bus: 16-bit, ISA  
 Size: Half-length, Full-height card  
 Hard drive supported: Two IDE (AT) Interface drives  
 Floppy drives supported: 360KB, 720KB, 1.2MB, 1.44MB



CONNECTIONS	
Function	Location
4-pin connector - drive active LED	P1
40-pin IDE(AT) interface	P2
34-pin control cable connector - floppy drive	P3
9-pin serial port 2 - internal	P4
9-pin serial port 1 - internal	P5
15-pin connector - game port	P6
25-pin parallel port - external	P7

USER CONFIGURABLE SETTINGS		
Function	Location	Setting
í Data bit 7 is HD7	J1	pins 1 & 2 closed
Data bit 7 is D7	J1	pins 2 & 3 closed
í Serial port 2 enabled	J2	pins 1 & 2 closed
Serial port 2 disabled	J2	pins 2 & 3 closed

Continued on next page...

**INFORMTECH INTERNATIONAL, INC.**  
**UN-1061**

... continued from previous page

<b>USER CONFIGURABLE SETTINGS(CONTINUED)</b>		
Function	Location	Setting
í Parallel port enabled	J3	pins 1 & 2 closed
Parallel port disabled	J3	pins 2 & 3 closed
í IDE interface enabled	J4	pins 1 & 2 closed
IDE interface enabled	J4	pins 2 & 3 closed
í Floppy drive interface enabled	J5	pins 1 & 2 closed
Floppy drive interface disabled	J5	pins 2 & 3 closed
í Serial port 2 address 2F8 - 2FFh select	J6	pins 1 & 2 closed
Serial port 2 address 2E8 - 2EFh select	J6	pins 2 & 3 closed
í Serial port 1 address 3F8 - 3FFh select	J7	pins 1 & 2 closed
Serial port 1 address 3E8 - 3EFh select	J7	pins 2 & 3 closed
í Serial port 1 enabled	J8	pins 1 & 2 closed
Serial port 1 disabled	J8	pins 2 & 3 closed
í Parallel port address 378 - 37Fh select	J9	pins 1 & 2 closed
Parallel port address 278 - 27Fh select	J9	pins 2 & 3 closed
í Floppy drive interface address 3F0 - 3F7h select	J10	pins 1 & 2 closed
Floppy drive interface address 370 - 377h select	J10	pins 2 & 3 closed
í Factory configured - do not alter	J11	pins 1 & 2 closed
í Factory configured - do not alter	J12	N/A
í IDE interface primary address select	J13	pins 1 & 2 closed
IDE interface alternate address select	J13	pins 2 & 3 closed

<b>SERIAL PORT 1 INTERRUPT SELECT</b>				
IRQ	JP4/A	JP4/B	JP4/C	JP4/D
í IRQ4	N/A	N/A	Pins 2 & 3	N/A
IRQ2	Pins 2 & 3	N/A	N/A	N/A
IRQ3	N/A	Pins 2 & 3	N/A	N/A
IRQ5	N/A	N/A	N/A	Pins 2 & 3
Note: All pins designated should be in the closed position.				

<b>SERIAL PORT 2 INTERRUPT SELECT</b>				
IRQ	JP4/A	JP4/B	JP4/C	JP4/D
í IRQ3	N/A	Pins 1 & 2	N/A	N/A
IRQ2	Pins 1 & 2	N/A	N/A	N/A
IRQ4	N/A	N/A	Pins 1 & 2	N/A
IRQ5	N/A	N/A	N/A	Pins 1 & 2
Note: All pins designated should be in the closed position.				