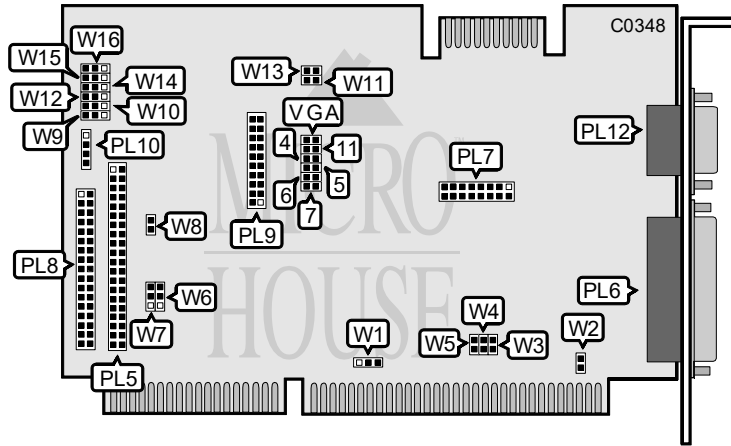


DD&TT ENTERPRISE USA COMPANY DT-9030 SUPER VGA MULTI I/O CARD

Q4/93

Data bus: 16-bit, ISA
Size: Half-length, full-height card
Hard drive supported: Two IDE(AT) Interface drives
Floppy drives supported: Two 360KB, 720KB, 1.2MB, or 1.44MB drives



CONNECTIONS	
Function	Location
40-pin IDE(AT) Interface connector	PL5
25-pin parallel port - external	PL6
15-pin game port - internal	PL7
34-pin control cable connector - floppy drive	PL8
20-pin serial ports (COM1/3 & COM2/4) - internal	PL9
4-pin connector - Drive Active LED	PL10
15-pin VGA connector - external	PL12

Continued on next page . . .

DD&TT ENTERPRISE USA COMPANY

DT-9030 SUPER VGA MULTI I/O CARD

... continued from previous page

VERTICAL FREQUENCY FOR 1024 x 768 MODE		
Frequency	Jumper 4	Jumper 5
43.5 Hz interlaced	closed	closed
70 Hz non-interlaced	open	closed
60 Hz non-interlaced	closed	open
43.5 Hz interlaced	open	open

VERTICAL FREQUENCY FOR 800 x 600 MODE		
Frequency	Jumper 6	Jumper 7
56 Hz non-interlaced	closed	closed
72 Hz non-interlaced	open	closed
60 Hz non-interlaced	closed	open
56 Hz non-interlaced	open	open

USER CONFIGURABLE SETTINGS		
Function	Location	Setting
Video horizontal frequency is 40KHz	11	closed
Video horizontal frequency is 31.5KHz	11	open
í Parallel port interrupt is IRQ7	W1	pins 1 & 2 closed
Parallel port interrupt is IRQ5	W1	pins 2 & 3 closed
í Video interrupt disabled	W2	open
Video interrupt is IRQ9 (EGA compatible)	W2	closed
í Video enabled	W3 & VGA	open
Video disabled	W3 & VGA	closed
í Zero wait state enabled for video	W5	closed
Zero wait state disabled for video	W5	open
í Game port enabled	W4	open
Game port disabled	W4	closed
í I/O Channel Ready disabled	W8	open
I/O Channel Ready enabled	W8	closed
í Floppy drive enabled	W9	pins 1 & 2 closed
Floppy drive disabled	W9	pins 2 & 3 closed
í 512KB Video memory installed	W11	closed
1MB Video memory installed	W11	open
í Hard drive enabled	W14	pins 1 & 2 closed
Hard drive disabled	W14	pins 2 & 3 closed

Continued on next page ...

DD&TT ENTERPRISE USA COMPANY

DT-9030 SUPER VGA MULTI I/O CARD

Q4/93

... continued from previous page

SERIAL PORT 1 CONFIGURATION		
COM	W6	W7
i COM1 (3F8-3FFh)	pins 1 & 2 closed	pins 1 & 2 closed
COM2 (2F8-2FFh)	pins 2 & 3 closed	pins 1 & 2 closed
COM3 (3E8-3EFh)	pins 1 & 2 closed	pins 2 & 3 closed
Disabled	pins 2 & 3 closed	pins 2 & 3 closed

SERIAL PORT 1 CONFIGURATION		
COM	W6	W7
i COM1 (3F8-3FFh)	pins 1 & 2 closed	pins 1 & 2 closed
COM2 (2F8-2FFh)	pins 2 & 3 closed	pins 1 & 2 closed
COM3 (3E8-3EFh)	pins 1 & 2 closed	pins 2 & 3 closed
Disabled	pins 2 & 3 closed	pins 2 & 3 closed

SERIAL PORT 2 CONFIGURATION		
COM	W10	W12
i COM2 (2F8-2FFh)	pins 1 & 2 closed	pins 1 & 2 closed
COM1 (3E8-3EFh)	pins 2 & 3 closed	pins 1 & 2 closed
COM4 (2E8-2EFh)	pins 1 & 2 closed	pins 2 & 3 closed
Disabled	pins 2 & 3 closed	pins 2 & 3 closed

PARALLEL PORT CONFIGURATION		
COM	W15	W16
LPT3 (278-27Fh)	pins 1 & 2 closed	pins 1 & 2 closed
i LPT2 (378-37Fh)	pins 2 & 3 closed	pins 1 & 2 closed
LPT1 (3BC-3BFh)	pins 1 & 2 closed	pins 2 & 3 closed
Disabled	pins 2 & 3 closed	pins 2 & 3 closed