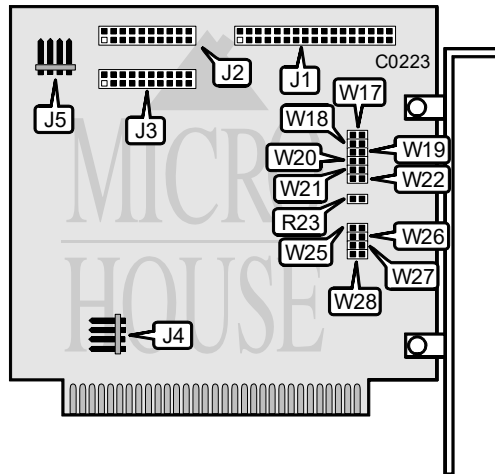


**WESTERN DIGITAL CORPORATION**  
**WD1004-27X, WD1004A-27X**  
*Replaces the WD1002-27X and WD1002A-27X respectively*

Data bus: 8-bit, PC/AT  
 Size: Half-length, full-height card  
 Hard drives supported: 2 RLL ST506/412 drives  
 Floppy drives supported: None  
 Maximum heads/cyl.: 16 heads and 1024 cylinders



CONNECTIONS	
Function	Location
34-pin control cable connector-hard drive	J1
20-pin data cable connector-drive 0	J2
20-pin data cable connector-drive 1	J3
5-pin connector-DC power	J4
4-pin connector-drive active LED	J5

USERS CONFIGURABLE SETTINGS		
Function	Location	Setting
Hard drive Interrupt request is IRQ5	W27	closed
Hard drive Interrupt request is IRQ2	W27	open

*Continued on next page . . .*

**WESTERN DIGITAL CORPORATION**  
**WD1004-27X, WD1004A-27X**

... continued from previous page

BIOS DRIVE TYPE TABLE - (WD1004-27X only)							
Table #	W17	W18	W19	W20	Cap.	Hds.	Cyls.
0	closed	closed	closed	closed	65MB	6	820
1	open	closed	open	closed	42MB	4	782
2	closed	open	closed	open	21MB	2	782
3	open	open	open	open	32MB	4	615

I/O PORT & BIOS ADDRESS JUMPERS - (WD1004-27X only)			
I/O Port Address	BIOS Address	W21	W22
320-323h	C800-C9FFh	open	open
324-327h	CA00-CBFFh	closed	open
328-32Bh	CC00-CDFFh	open	closed
32C-32Fh	CE00-CFFFh	closed	closed

SECTORS AND CONFIGURATION OPTION					
Table	Sectors	Translate	Dynamic	W25	W26
RLL	17	yes	no	closed	open
RLL	26	no	yes	open	closed

MISCELLANEOUS TECHNICAL NOTES
This controller has a built-in low-level format program. To enter the program run the DEBUG utility supplied with DOS and at the prompt enter: G=C800:5.