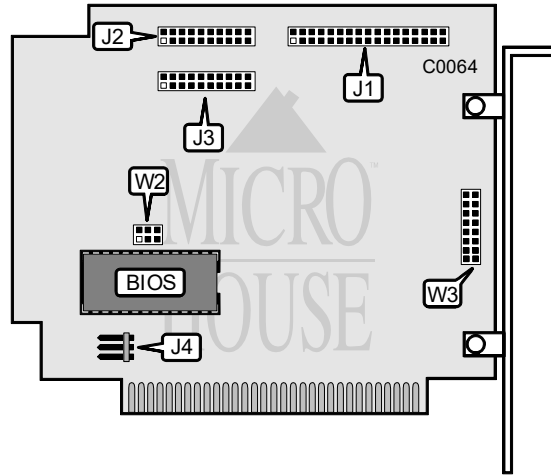


DATA TECHNOLOGY CORPORATION

DTC5150XL, DTC5160XL

Q2/92

Data bus: 8-bit, ISA
 Size: Half-length, full-height card
 Hard drives supported: DTC5150XL: Two MFM ST506/412 drives
 DTC5160XL: Two RLL ST506/412 drives with 17, 32, or 60 sector mapping
 Floppy drives supported: None



CONNECTIONS	
Function	Location
34-pin control cable connector-hard drive	J1
20-pin data cable connector-drive (logical LUN determined by drive setting)	J2
20-pin data cable connector-drive (logical LUN determined by drive setting)	J3
3-pin connector-drive active LED	J4

USER CONFIGURABLE SETTINGS		
Function	Location	Setting
i I/O port address 320-323h	W2/jumper 4	closed
i I/O port address 324-327h	W2/jumper 4	open
i CXD BIOS drive type selection (see tables with DTC5150X for drive types)	W3 (5150XL only)	see CXD drive type table
BIOS drive type selected at low-level (see table DTC5150X for drive types)	W3 (5150XL only)	see CXD drive type table

Continued on next page . . .

DATA TECHNOLOGY CORPORATION
DTC5150XL, DTC5160XL

... continued from previous page

BIOS ADDRESS			
Address	W2/jumper 1	W2/jumper 2	W2/jumper 3
C8000h	closed	closed	closed
CA000h	closed	closed	open
D8000h	closed	open	closed
F4000h	closed	open	open
Disabled	open	closed	closed

DRIVE TYPE SELECTION FOR THE DTC5150XL- W3				
CXD Drive Types	Jumper 1 Drv. 1 Jumper 3 Drv. 0	Jumper 2 Drv. 1 Jumper 4 Drv. 0	Jumper 5 Drv. 1 Jumper 7 Drv. 0	Jumper 6 Drv. 1 Jumper 8 Drv. 0
0	closed	closed	closed	closed
1	open	closed	closed	closed
2	closed	open	closed	closed
3	open	open	closed	closed
4	closed	closed	open	closed
5	open	closed	open	closed
6	closed	open	open	closed
7	open	open	open	closed
8	closed	closed	closed	open
9	open	closed	closed	open
10	closed	open	closed	open
11	open	open	closed	open
12	closed	closed	open	open
13	open	closed	open	open
14	closed	open	open	open
15	open	open	open	open