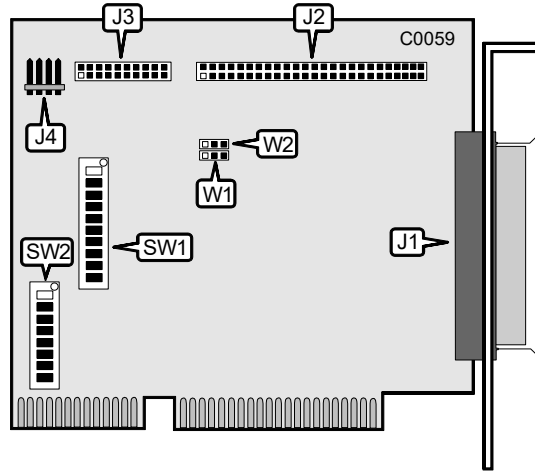


DATA TECHNOLOGY CORPORATION DTC3280A, DTC3280AS (400480-89XX)

Q2/92

Data bus: 16-bit, ISA.
 Size: Half-length, full-height card.
 Hard drives supported: Up to seven SCSI devices
 Floppy drives supported: DTC3180A: None
 DTC3280A: Four 360KB, 720KB, 1.2MB or 1.44 MB drives



CONNECTIONS	
Function	Location
50-pin SCSI connector-external	J1
50-pin SCSI connector-internal	J2
34-pin data cable connector-floppy drive (DTC3280A and AS only)	J3
4-pin connector-drive active LED	J4

Continued on next page . . .

DATA TECHNOLOGY CORPORATION
DTC3180A, DTC3180AS, DTC3280A, DTC3280AS

... continued from previous page

USER CONFIGURABLE SETTINGS		
Function	Location	Setting
í Single-speed floppy supported	SW1/switch 7	off
Dual-speed floppy supported	SW1/switch 7	on
í PS/2-type floppy on Drive Select 2 not supported	SW1/switch 8	on
PS/2-type floppy drive on Drive Select 2 supported	SW1/switch 8	off
í Floppy drive precomp. is scaled by data rate: 500KHz=125ns, 300KHz=208ns, 250KHz=250ns	SW1/switch 9	off
Floppy drive precompensation is 125ns	SW1/switch 9	on
í Floppy drive enabled	SW1/switch 10	on
Floppy drive disabled	SW1/switch 10	off
í Factory configured - do not alter	SW2/switch 3	off
í Factory configured - do not alter	SW2/switch 4	off
í SCSI parity check enabled	SW2/switch 5	off
SCSI parity check disabled	SW2/switch 5	on
í 2KB SRAM selected	W1	pins 2 & 3 closed
8KB SRAM selected	W1	pins 1 & 2 closed
í Floppy drive address 3F2-3F7h	W2	pins 1 & 2 closed
Floppy drive address 372-377h	W2	pins 2 & 3 closed

INQUIRY INTERRUPT REQUEST "B" OPTIONS				
IRQ	SW1/switch 1	SW1/switch 2	SW1/switch 3	SW1/switch 4
í IRQ11	off	off	on	off
IRQ10	off	off	off	on
IRQ12	off	on	off	off
IRQ15	on	off	off	off
Disabled	off	off	off	off

BIOS ADDRESS		
Address	SW1/switch 5	SW1/switch 6
í D800h	off	off
C800h	off	on
DC00h	on	off
CC00h	on	on

Continued on next page . . .

DATA TECHNOLOGY CORPORATION
 DTC3180A, DTC3180AS, DTC3280A, DTC3280AS

... continued from previous page

INTERRUPT REQUEST		
IRQ	SW2/switch 1	SW2/switch 2
i IRQ11	off	on
IRQ12	on	off
IRQ10	on	on
IRQ15	off	off

SCSI ADDRESS			
SCSI ID	SW2/switch 6	SW2/switch 7	SW2/switch 8
0	on	on	on
1	off	on	on
2	on	off	on
3	off	off	on
4	on	on	off
5	off	on	off
6	on	off	off
i 7	off	off	off