

CORE SHEETS

ADD'L EV380 SHEETS

386X CPU

ISA/PCI04 BUS CONNECTORS

386DEV, CLOCK, RESET, DRAM

LOGIC ANALYZER CONNECTORS

FLASH - BIOS AND APP

POWER STUFF

IDE INTERFACE

COMCIA (CL-ED6710)

VDA (CL-SD6245)

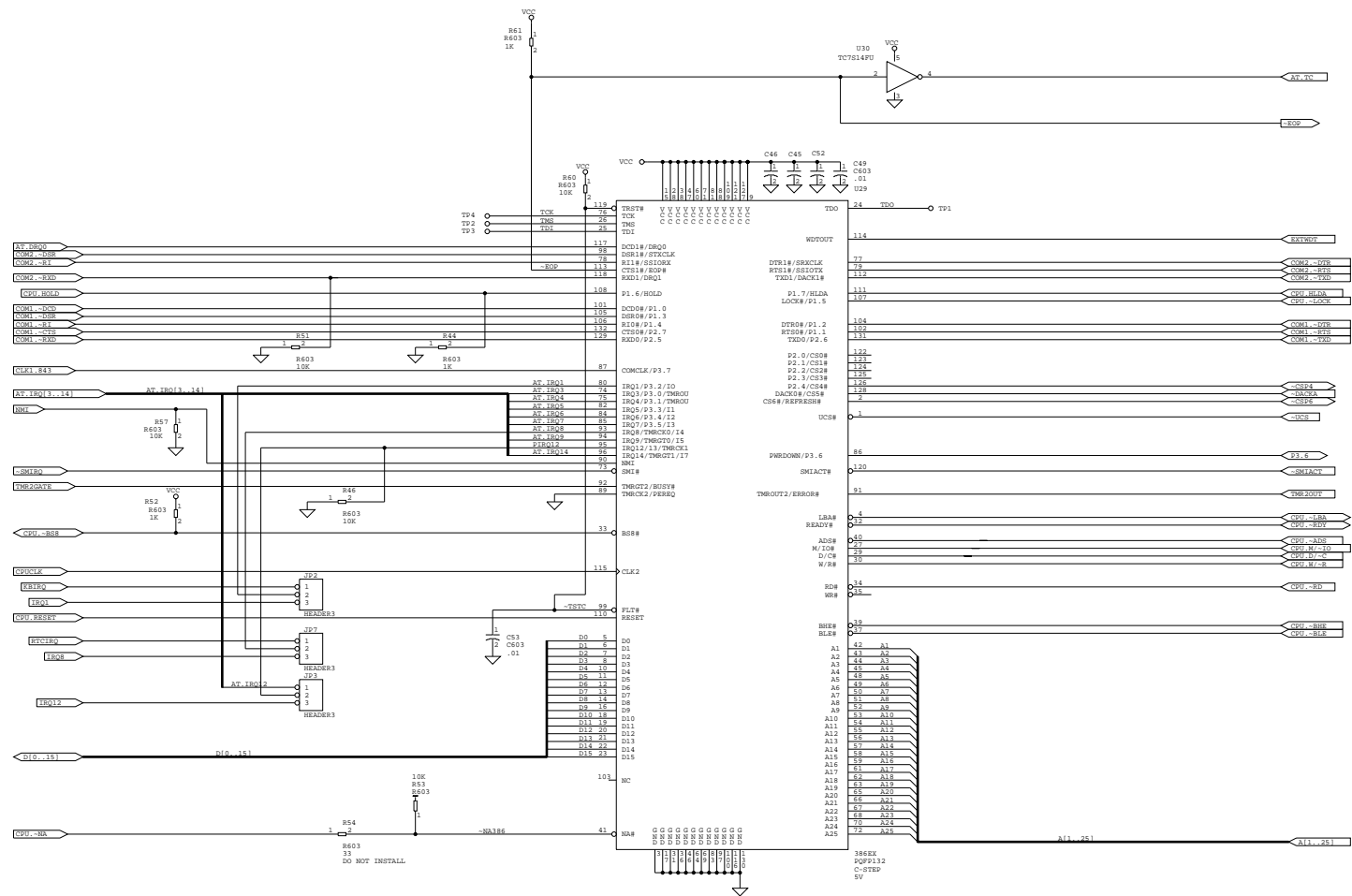
EXT. KEYBD, BTO, DRAM CONTROLLER

AT-BUS TERMINATIONS

FLOPPY, PARALLEL PORT

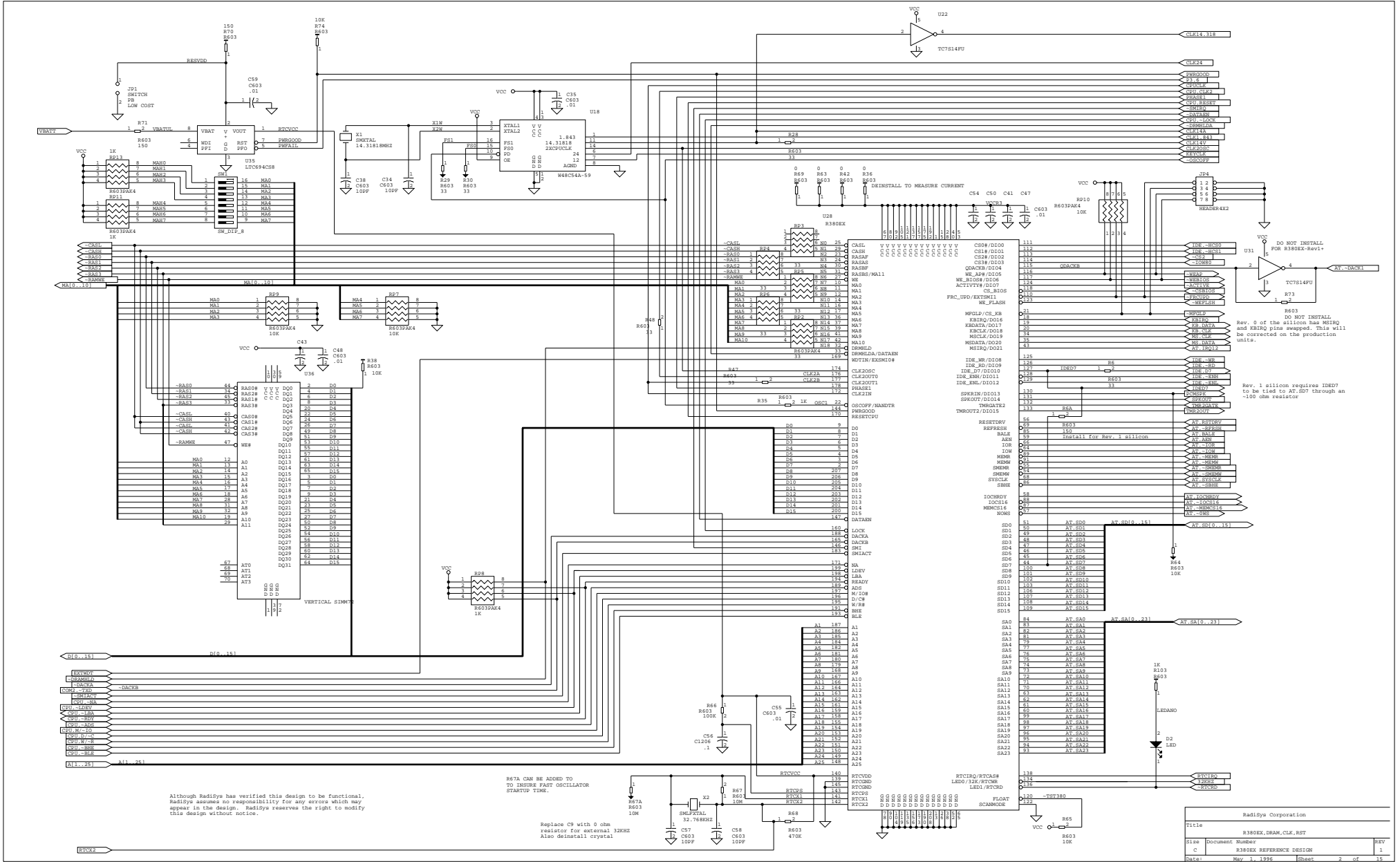
SERIAL PORT DRIVERS/CONN

MISC. CONN - VDA/FP/KBD/MS



Although RadiSys has verified this design to be functional, RadiSys assumes no responsibility for any errors which may appear in the design. RadiSys reserves the right to modify this design without notice.

RadiSys Corporation			
File	CPU SECTION		
Size	Document Number		REV
C	R1802X REFERENCE DESIGN		1
Date:	April 5, 1995	Sheet	1 of 15



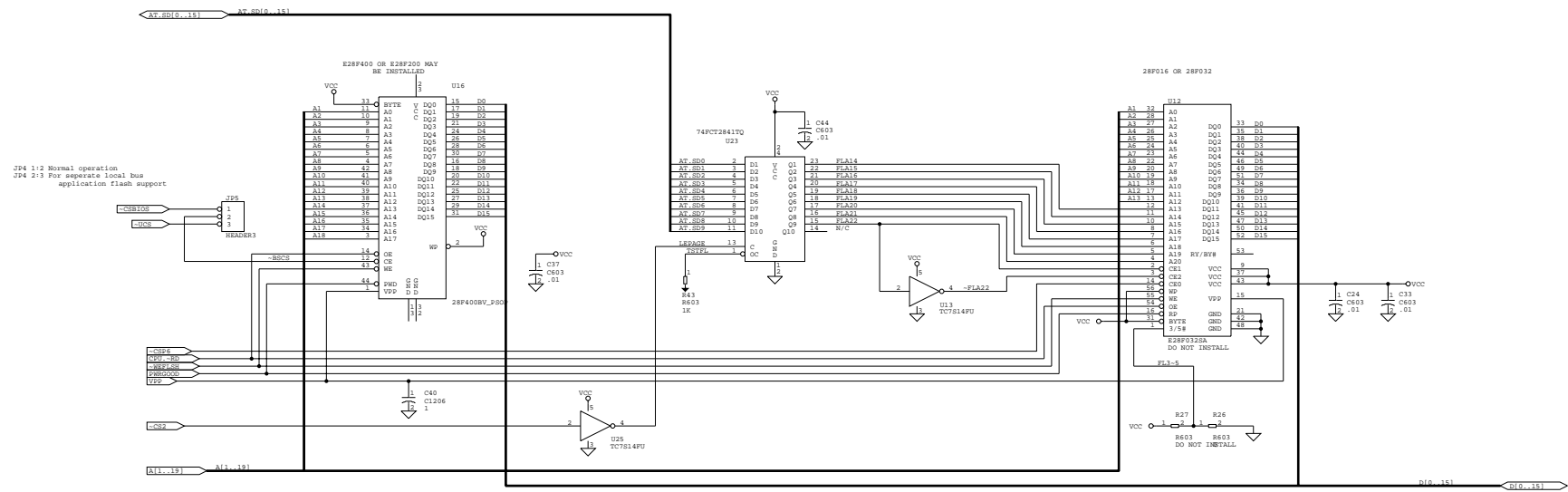
Although RadiSys has verified this design to be functional, RadiSys assumes no responsibility for any errors which may appear in the design. RadiSys reserves the right to modify this design without notice.

RSTA CAN BE ADDED TO THIS PART OSCILLATOR STARTUP TIME.

Replace C9 with 0 ohm resistor for external 32KHZ Also desinstall crystal

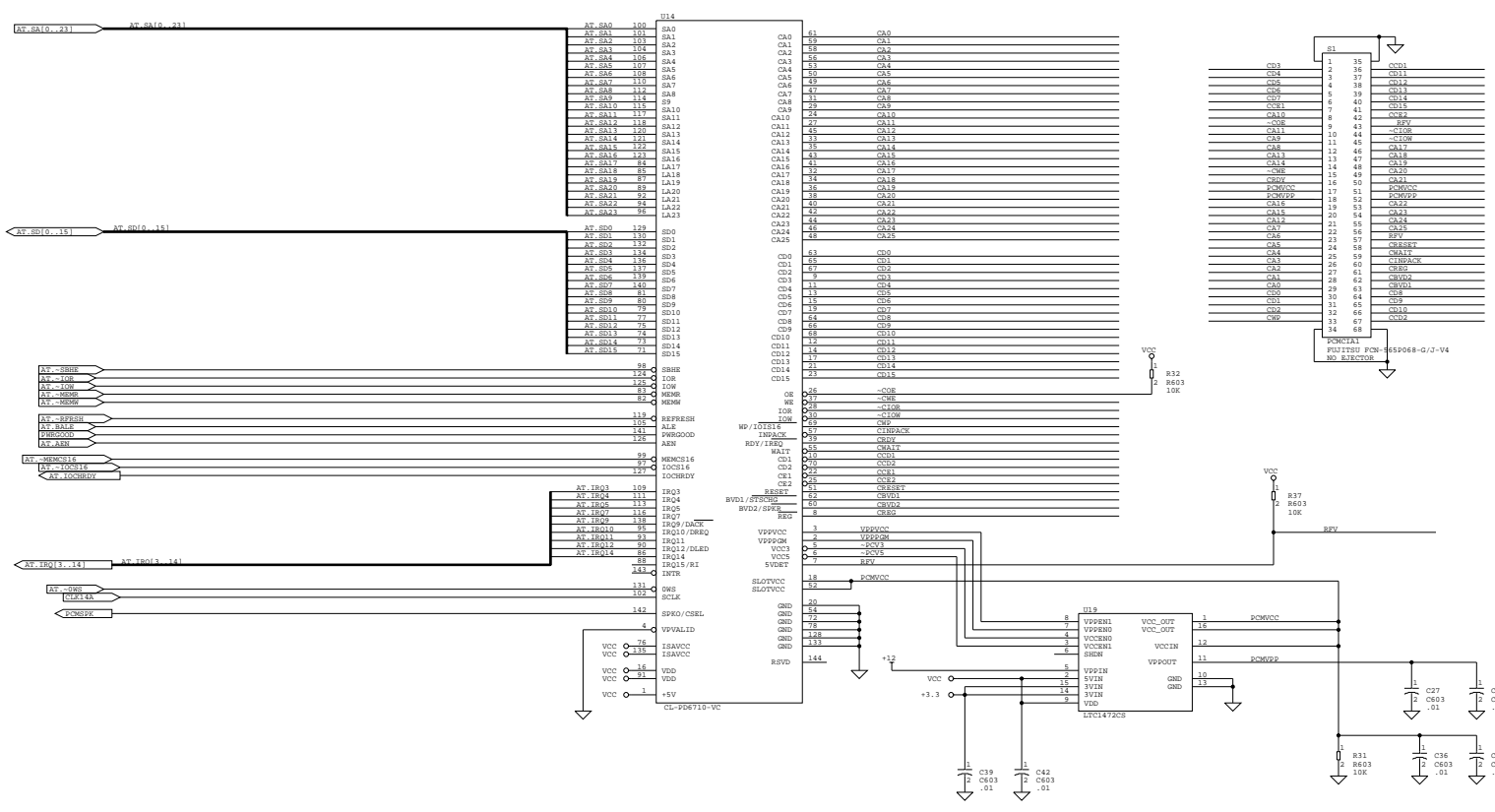
DO NOT INSTALL FOR R380EX-Rev1.
DO NOT INSTALL and R380 pins swapped. This will be corrected on the production units.
Rev. 1 silicon requires IDE07 to be tied to AT_S07 through an -100 ohm resistor

RadiSys Corporation			
File:	R380EX_DRAM_CLK_RST	REV:	1
Size:	Document Number		
Date:	Rev 1, 1995	Issue:	2 of 35



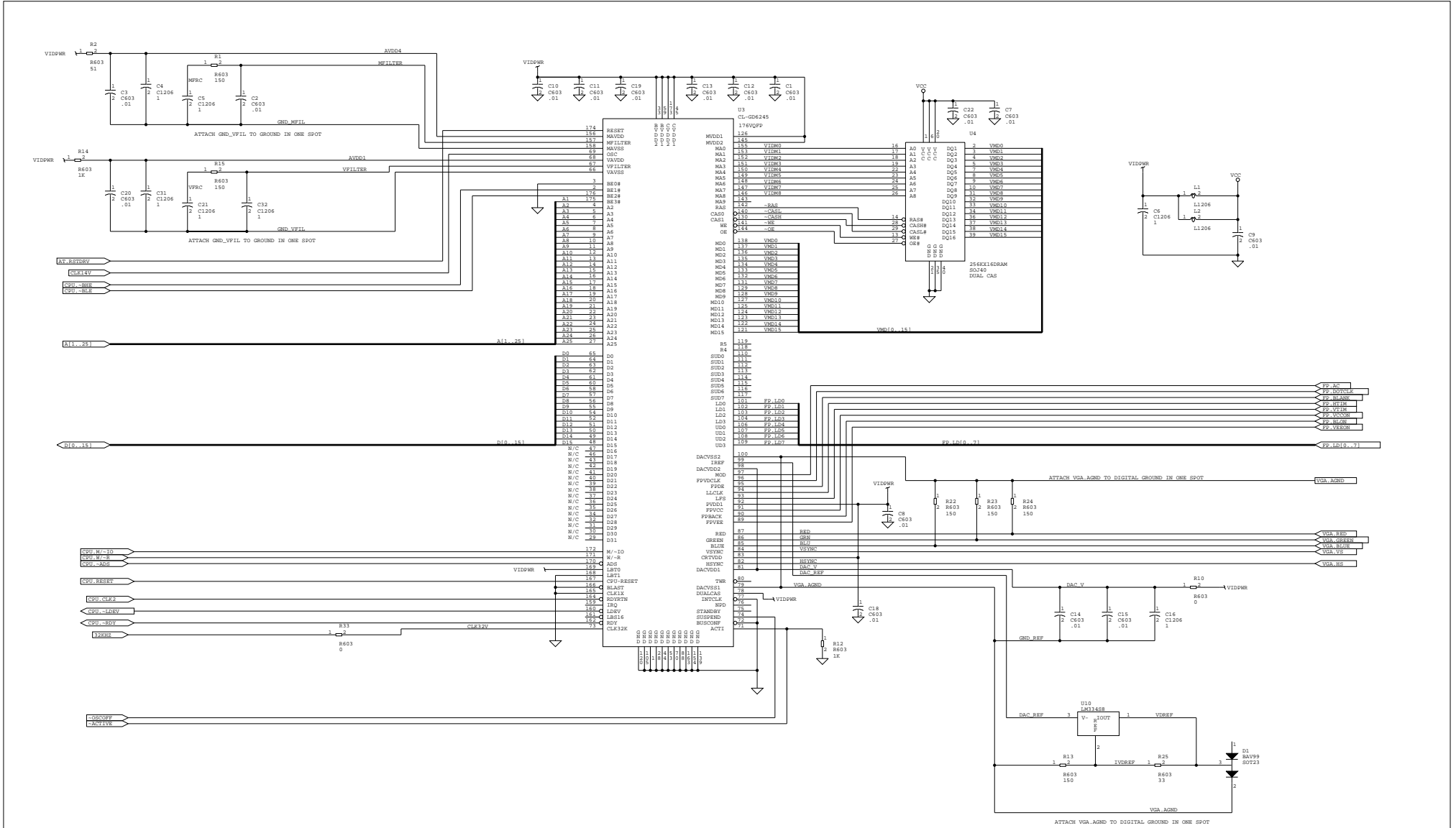
Although RadiSys has verified this design to be functional, RadiSys assumes no responsibility for any errors which may appear in the design. RadiSys reserves the right to modify this design without notice.

RadiSys Corporation		
File	FLASH	
Size	Document Number	REV
C	R180EX REFERENCE DESIGN	1
Date:	April 3, 1995	Page 3 of 35



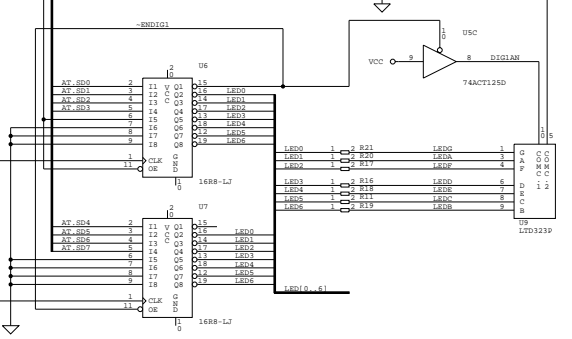
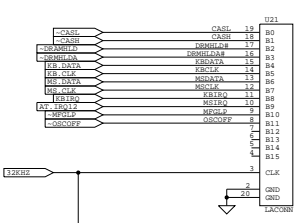
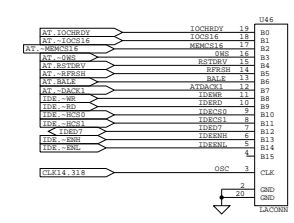
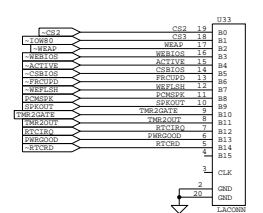
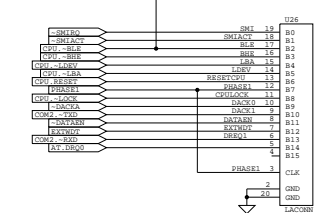
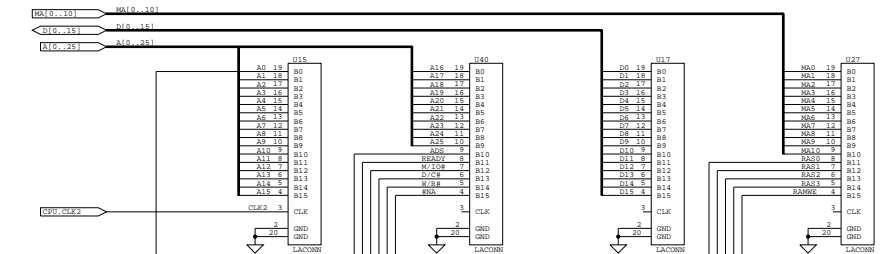
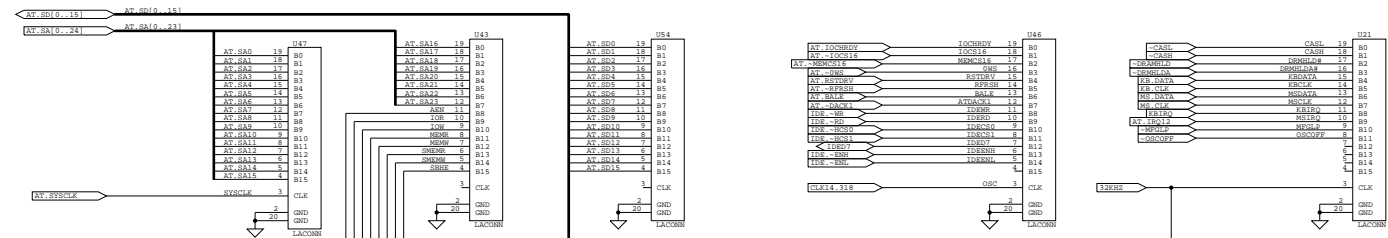
Although RadiSys has verified this design to be functional, RadiSys assumes no responsibility for any errors which may appear in the design. RadiSys reserves the right to modify this design without notice.

RadiSys Corporation			
File	PDMCIA		REV
Size	Document Number		1
C	R180EX REFERENCE DESIGN		1
Date:	April 3, 1995	Issued	4 of 15



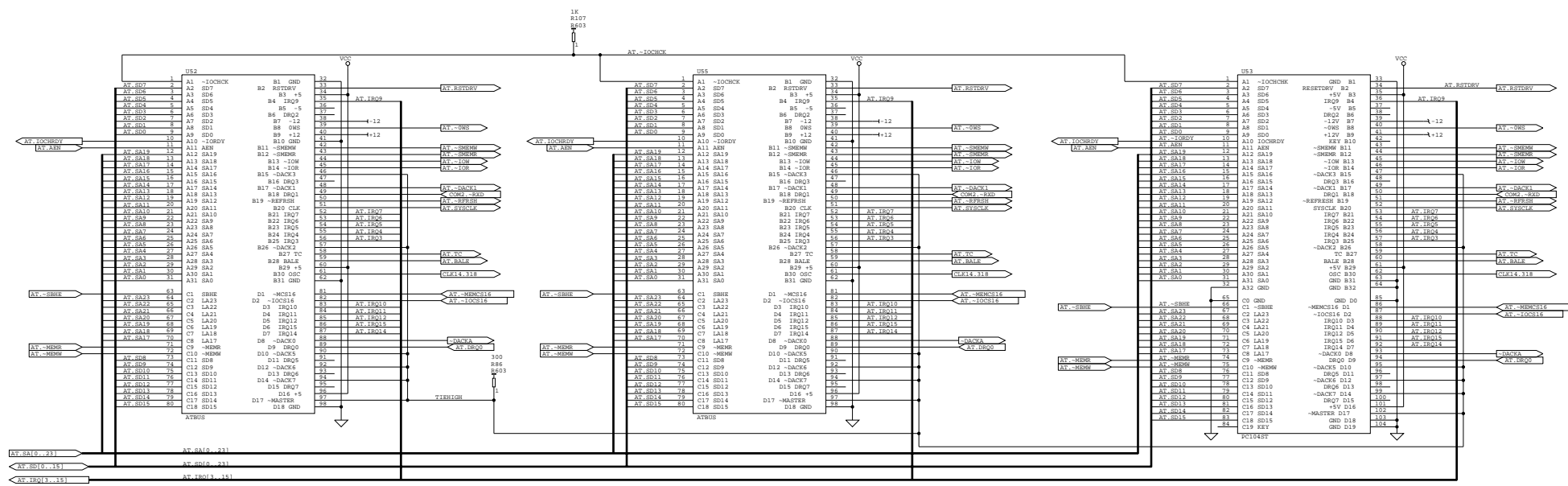
Although RadiSys has verified this design to be functional, RadiSys assumes no responsibility for any errors which may appear in the design. RadiSys reserves the right to modify this design without notice.

RadiSys Corporation		
File	VSA	REV
Size	Document Number	1
C	R180EX REFERENCE DESIGN	1
Date:	April 3, 1995	Page 8 of 15



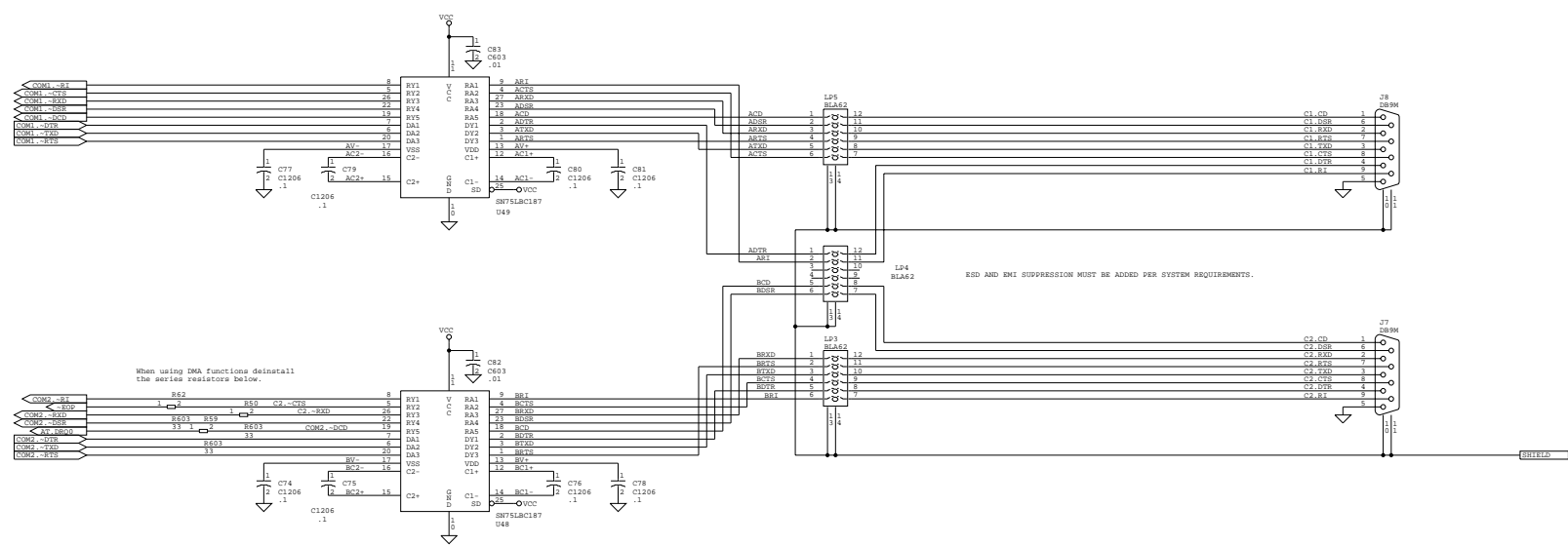
Although RadiSys has verified this design to be functional, RadiSys assumes no responsibility for any errors which may appear in the design. RadiSys reserves the right to modify this design without notice.

RadiSys Corporation		
File	LOGIC ANALYZER CORR (R1648), F08T 80 LED	
Size	Document Number	REV
C	R1648X REFERENCE DESIGN	1
Date:	April 3, 1995	Page 6 of 15



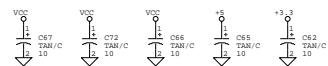
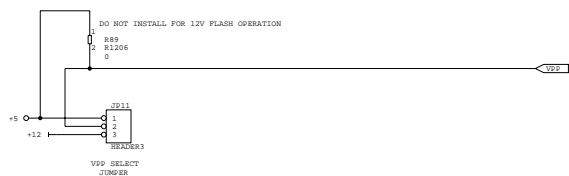
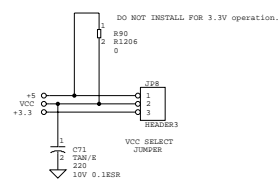
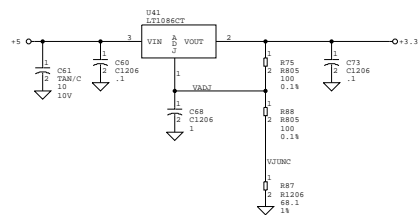
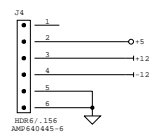
Although RadiSys has verified this design to be functional, RadiSys assumes no responsibility for any errors which may appear in the design. RadiSys reserves the right to modify this design without notice.

RadiSys Corporation			
File	ISA/F104 BUS CONNECTORS		REV
C	Document Number	R380EX REFERENCE DESIGN	1
Date:	April 5, 1995	Issue:	1 of 15



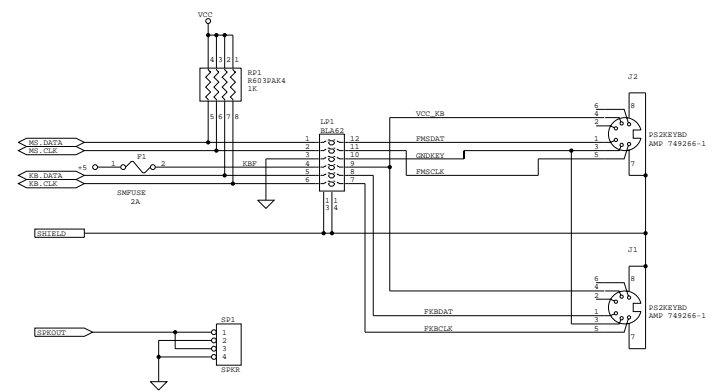
Although RadiSys has verified this design to be functional, RadiSys assumes no responsibility for any errors which may appear in the design. RadiSys reserves the right to modify this design without notice.

RadiSys Corporation		
File	SERIAL PORT DRIVERS AND CORN	
Size	Document Number	REV
C	R5105X REFERENCE DESIGN	1
Date:	April 3, 1995	Page 8 of 15

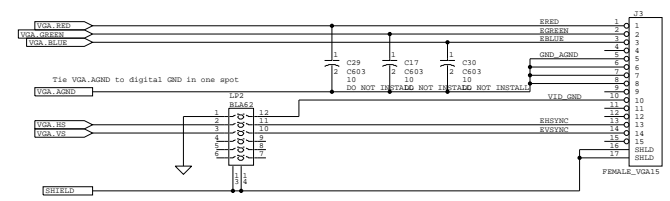


Although RadiSys has verified this design to be functional, RadiSys assumes no responsibility for any errors which may appear in the design. RadiSys reserves the right to modify this design without notice.

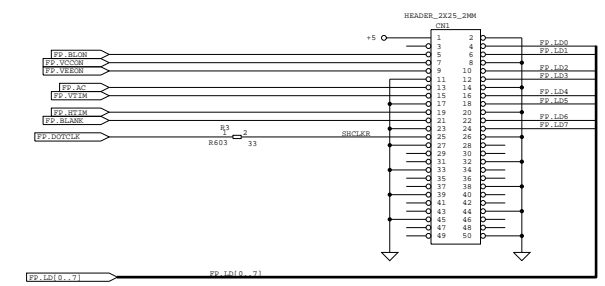
RadiSys Corporation		
File	POWER STUFF	
Size	Document Number	REV
C	R1805X REFERENCE DESIGN	1
Date:	April 3, 1995	Page 9 of 15



SPEAKER OUT
 Speaker impedance should be > 100 ohms
 To drive lower impedance speakers
 Add an NPN gain stage and use VCC as other terminal

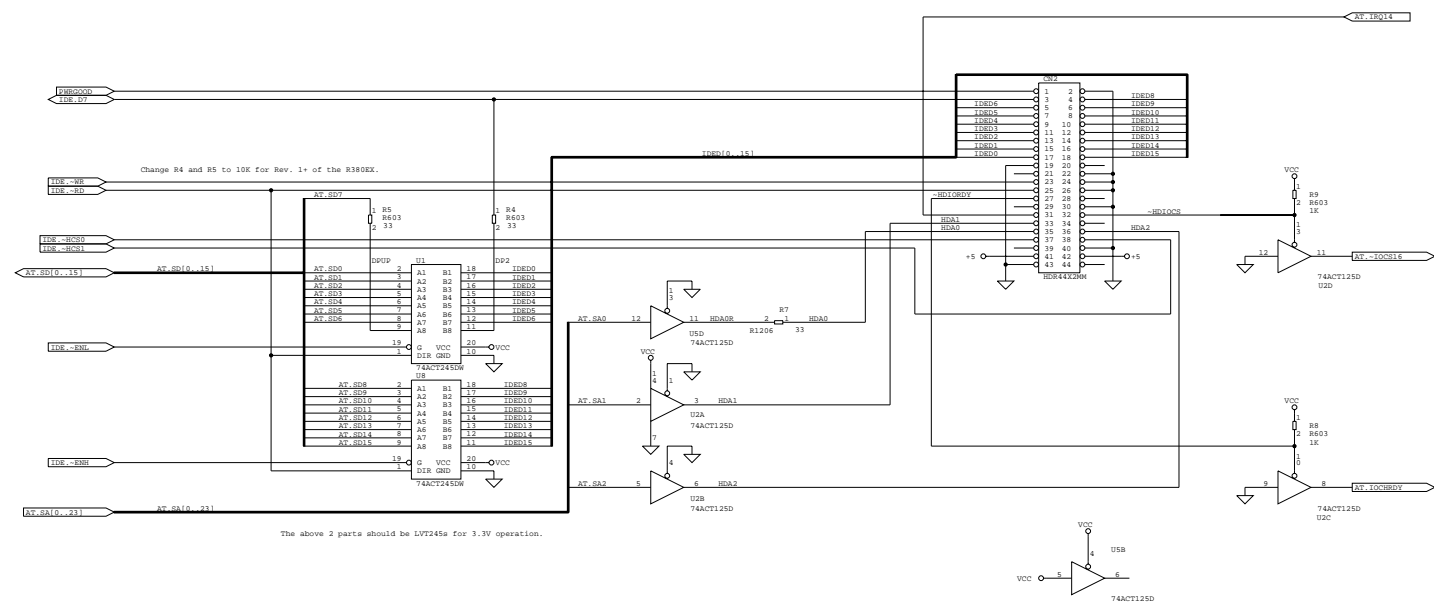


Tie VSA_A0M0 to digital GND in one spot



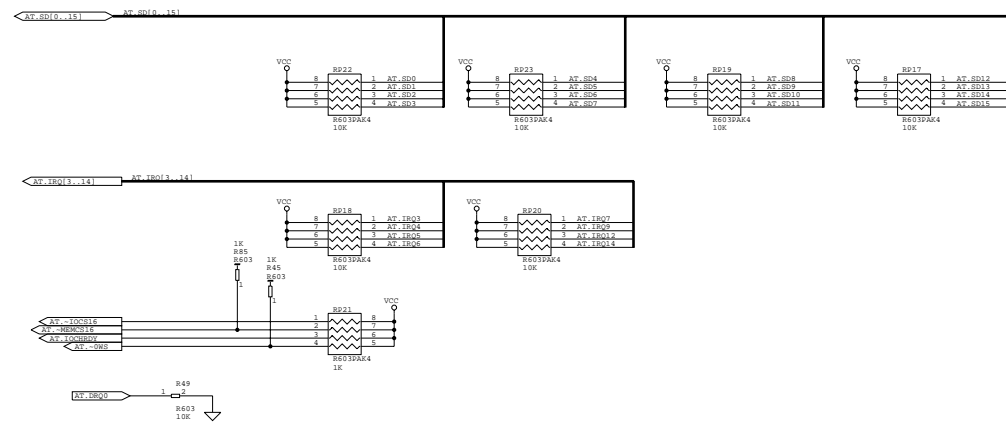
Although RadiSys has verified this design to be functional,
 RadiSys assumes no responsibility for any errors which may
 appear in the design. RadiSys reserves the right to modify
 this design without notice.

RadiSys Corporation		
File	MISC CBOM - VDA_FP_KBD_MS	
Size	Document Number	REV
C	RIBOEX REFERENCE DESIGN	1
Date:	April 3, 1995	Page 10 of 15



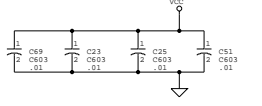
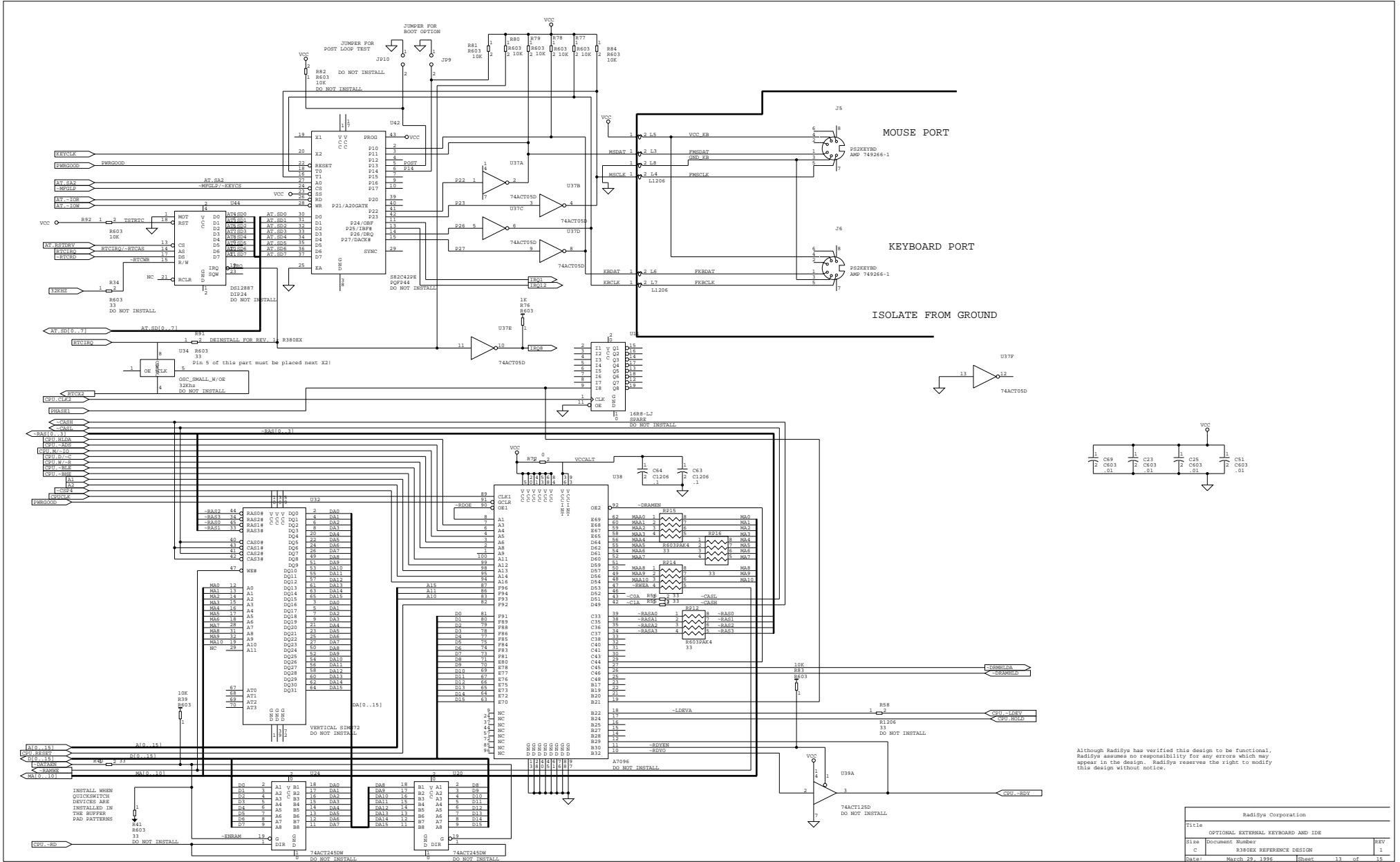
Although RadiSys has verified this design to be functional, RadiSys assumes no responsibility for any errors which may appear in the design. RadiSys reserves the right to modify this design without notice.

RadiSys Corporation			
File	IDE INTERFACE		
Size	Document Number		REV
C	R3900X REFERENCE DESIGN		1
Date:	April 3, 1995	Sheet	11 of 15

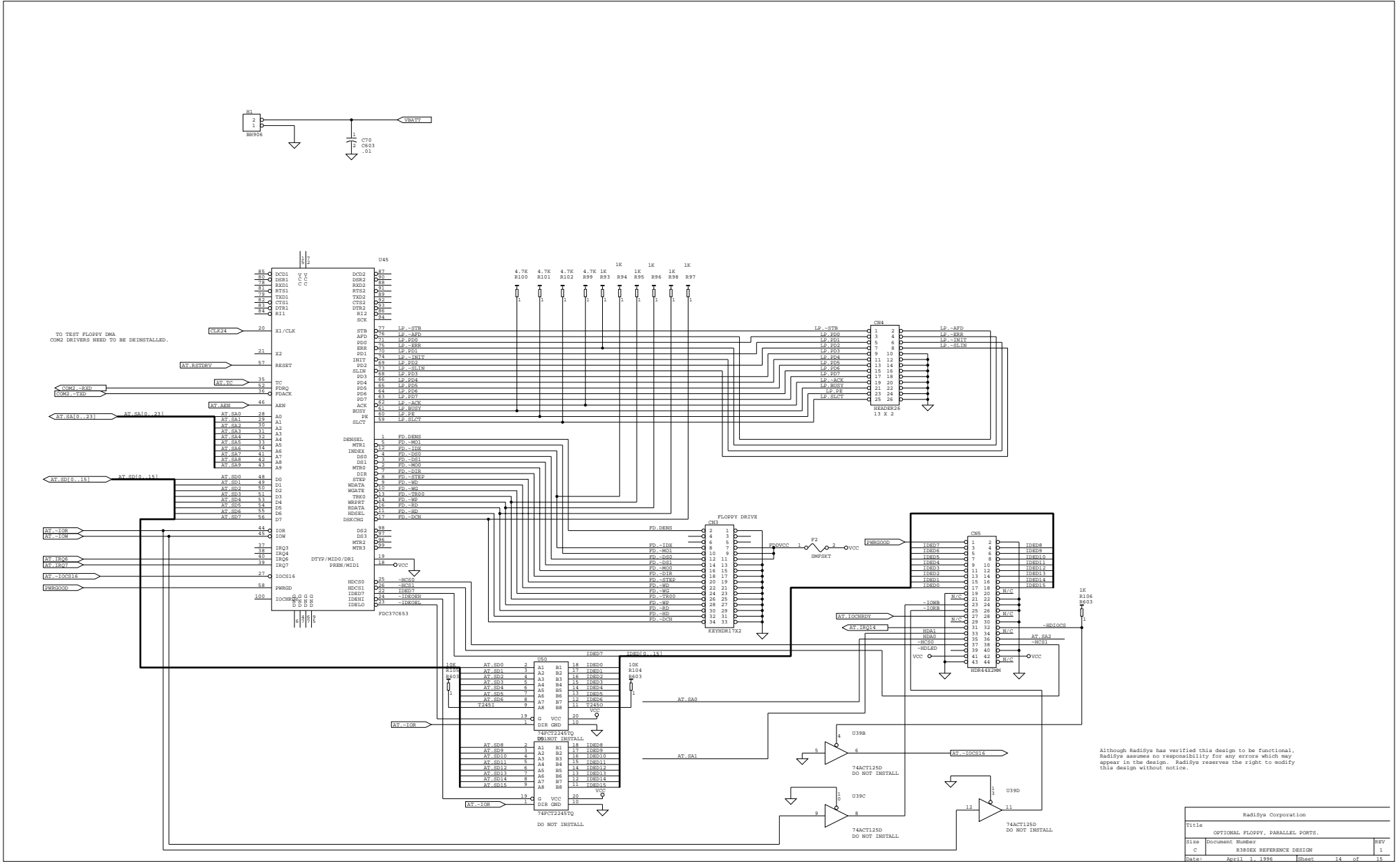


Although RadiSys has verified this design to be functional, RadiSys assumes no responsibility for any errors which may appear in the design. RadiSys reserves the right to modify this design without notice.

RadiSys Corporation		
Title	AT-808 RESISTIVE TERM	
Size	Document Number	REV
C	R1808X REFERENCE DESIGN	1
Date:	April 3, 1995	Page 12 of 15



RadiSys Corporation			
File	OPTIONAL EXTERNAL KEYBOARD AND IDE		
Size	Document Number	REV	
C	R180EX REFERENCE DESIGN	1	
Date:	March 29, 1995	Issue:	13 of 35



RadiSys Corporation		
File	OPTIONAL FLOPPY, PARALLEL PORTS.	REV
Size	Document Number	1
C	R180EX REFERENCE DESIGN	1
Date:	April 3, 1988	Page 14 of 15